



2020 PCR Awards

By Dave Connery, Acting Honors Chair

During the Annual PCR General Membership Meeting, held via Zoom on May 29th, this year's award recipients were announced. The actual awards will be presented when face-to-face meetings can once again be safely held. The Division Member of the Year awards were as follows:

Coast Director, Lisa Gorrell, presented the Coast Division award to **Ronnie LaTorres**.



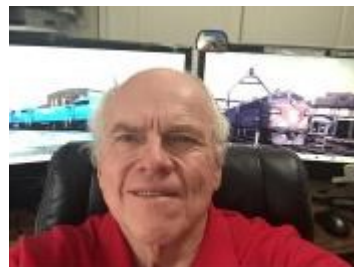
Outgoing Sierra Director, Tom Van Horn, presented the Sierra Division award to **Jim Collins**.



Outgoing Redwood Empire, Director Steve Skold, presented the RED award to **Al Merkrebs**.



PCR President, Chris Palermo, presented the Daylight Division award to **Dave Grenier**.



See "Awards" page 7

Category	Personnel	Phone	Email	
Officers, BOD	President, Chris Palermo	650-208-3150	PCRPREZ@nmra.org	
	Vice-President, Frank Markovich, MMR	408-505-2727	frank@frankmarkovich.com	
Administration	Treasurer, Bob Osborn	925-519-6016	brakemanbob@yahoo.com	
	Secretary, Chip Meriam	530-899-2609	chipmeriam@comcast.net	
	Director - Daylight, (vacant)			
	Director - Coast, Lisa Gorrell	925-228-4429	snrylisa@gmail.com	
	Director - Sierra, Tom Van Horn	209-626-0352	tomvca@aol.com	
	Director - RED, Steve Skold	707-539-1782	sandcskold@att.net	
	Manager, Chris Palermo	650-208-3150	PCRPREZ@nmra.org	
	Budget and Finance Committee [President, Vice-President and Treasurer]			
	By-laws and Manual Committee, Steve Skold	707-539-1782	sandcskold@att.net	
	Nomination Committee Chair, Dave Connery, MMR	925-735-0134	dgconnery@sbcglobal.net	
Membership	Ballot Committee, Jim Provenza	415-472-6715	rrjim@aol.com	
	Honors Committee, Ray deBleck	510-521-9778	RaydBCS@aol.com	
	Storekeeper, Ted Moes	510-749-7099	ted@tjmoes.com	
	Audit Committee, John Houlihan	559-435-0874	oscalejohn@gmail.com	
	Historian, Dave Connery, MMR	925-735-0134	dgconnery@sbcglobal.net	
	Manager, Doug Wagner	661-589-0391	CarlDW@aol.com	
	Member Services, Bob Ferguson	925-228-6833	BobPCRCD@aol.com	
	Member Aid, Rod Smith	510-657-3362	Railgeezer@aol.com	
	Education (vacant)			
	Special Interests, Seth Neumann	650-965-4687	sneumann@pacbell.net	
Pubs.	Manager, Gus Campagna	707-664-8466	campgus@earthlink.net	
	Editor, Chip Meriam	530-899-2609	chipmeriam@comcast.net	
	Webmaster, Dave Grenier	408-431-8989	pcrWebmaster@pcrnrmra.org	
	Chief Marketing Officer, Pete Birdsong	859-552-5467	rrpeteb@gmail.com	
Conv.	Manager, Tom Crawford	510-790-0371	tom@thecrawfordfamily.net	
	2021 Fresno, John Houlihan	559-435-0874	john@irishtracklayer.com	
Contest	Manager, Pat La Torres	650-793-7402	duhnerd@pacbell.net	
	Daylight Division, Chuck Harmon, MMR	559-299-4385	harmonsta@yahoo.com	
	Coast Division, Jim Eckman	650-996-6728	jim_eckman@roninengineer.com	
	Sierra Division, Gary Ray	530-990-1276	Gerber1926@gmail.com	
AP	RED, Giuseppe Aymar	707-291-0701	Giuseaymar@aol.com	
	Manager, Jack Burgess, MMR	510-797-9557	jack@yosemitevalleyrr.com	
	Daylight Division, Dave Grenier	408-431-8989	grenida@pacbell.net	
	Coast Division, Earl Girbovan	650-248-9255	egirbovan@netzero.com	
	Sierra Division, Dave Bayless	530-613-5784	davebayl@pacbell.net	
	RED, Giuseppe Aymar, MMR	707-291-0701	Giuseaymar@aol.com	
	Superintendent, (vacant)			
	Clerk / Paymaster, John Houlihan	559-435-0874	john@irishtracklayer.com	
	Editor, Chuck Harmon	559-299-4385	harmonsta@yahoo.com	
	Contest, Chuck Harmon	559-299-4385	harmonsta@yahoo.com	
Achievement, Dave Grenier	408-431-8989	grenida@pacbell.net		
Daylight	Membership, Doug Wagner	661-589-0391	CarlDW@aol.com	
	Member Aid, Bob Pethoud	559-438-7705	pethoud@comcast.net	
	Webmaster, Dave Grenier	408-431-8989	grenida@pacbell.net	
	Superintendent, Phil Edholm	408-632-5618	pedholm@pkeconsulting.com	
	Clerk, Brian Booth	925-324-2181	carcrazy832@yahoo.com	
	Paymaster, Bob Ferguson	925-228-6833	BobPCRCD@aol.com	
	Editor, Pete Birdsong	859-552-5467	rrpeteb@gmail.com	
	Contest, Jim Eckman	650-996-6728	jim_eckman@roninengineer.com	
	Achievement, Earl Girbovan	650-248-9255	egirbovan@netzero.com	
	Membership, Ronnie LaTorres	510-317-7456	veronicashadlow@yahoo.com	
Coast	Member Aid, Rod Smith	510-657-3362	Railgeezer@aol.com	
	Webmaster, Pete Birdsong, MMR	859-552-5467	rrpeteb@gmail.com	
	Superintendent, Chip Meriam	530-899-2609	chipmeriam@comcast.net	
	Clerk, Dave Fryman	925-360-1377	fryperson@hotmail.com	
	Paymaster, Al Rowe	916-961-9911	hofunar@aol.com	
	Editor, Chip Meriam	530-899-2609	chipmeriam@comcast.net	
	Contest, Gary Ray	530-873-0626	gerber1926@gmail.com	
	Achievement, Dave Bayless	530-613-5784	davebayl@pacbell.net	
	Membership, Jim Collins	209-566-0935	jimcol@charter.net	
	Webmaster, Gus Campagna	707-664-8466	campgus@earthlink.net	
Sierra	Superintendent, Scott Lockhart	707-775-9889	scottnl1947@gmail.com	
	Clerk / Paymaster, Dave Grundman	707-584-1964	dave_pat_1999@yahoo.com	
	Editor, Scott Lockhart	707-775-9889	scottnl1947@gmail.com	
	Program, Al Merkrebs	707-953-5358	alm@sonic.net	
	Contest, Giuseppe Aymar, MMR	707-291-0701	Giuseaymar@aol.com	
	Achievement, Giuseppe Aymar, MMR	707-291-0701	Giuseaymar@aol.com	
	Membership, Gus Campagna	707-664-8466	campgus@earthlink.net	
	Webmaster, Gus Campagna	707-664-8466	campgus@earthlink.net	
	RED	Superintendent, Scott Lockhart	707-775-9889	scottnl1947@gmail.com
		Clerk / Paymaster, Dave Grundman	707-584-1964	dave_pat_1999@yahoo.com
Editor, Scott Lockhart		707-775-9889	scottnl1947@gmail.com	
Program, Al Merkrebs		707-953-5358	alm@sonic.net	
Contest, Giuseppe Aymar, MMR		707-291-0701	Giuseaymar@aol.com	
Achievement, Giuseppe Aymar, MMR		707-291-0701	Giuseaymar@aol.com	
Membership, Gus Campagna		707-664-8466	campgus@earthlink.net	
Webmaster, Gus Campagna		707-664-8466	campgus@earthlink.net	

The Branch Line
The Official Publication of the
Pacific Coast Region/ National
Model Railroad Association

Vol. 77, No. 3 3rd Qtr, 2020

The Branch Line is published quarterly to inform members of Region activities and to provide educational articles for the advancement of railroad history and the art and science of model railroading. It is distributed to members of the Pacific Coast Region. Electronic versions are posted on the website, www.pcrnmra.org.

Copyright 2020, Pacific Coast Region, National Model Railroad Association. Permission to reprint granted to all affiliates of the NMRA. Others may request permission to reprint from the Editor:

Chip Meriam
 2260 Cherry Glenn Court
 Chico, CA 95926
 Phone (530) 899-2609
 e-mail: chipmeriam@comcast.net

All comments about materials contained in the BRANCH LINE should be mailed directly to the PCR Publications Manager, 1915 William Drive, Penngrove, CA94951.

Inquiries regarding membership application, renewal, or change of address should be directed to the NMRA, P.O. Box 1328 Soddy Daisy, TN 37384-1328.

Branch Line
Deadlines for 2020

OCT-NOV-DEC 2020 issue

Articles due by
September 10, 2019

JAN-FEB-MAR 2021 issue

Articles due by
December 10, 2020

APR-MAY-JUN 2021 issue

Articles due by
March 10, 2021

JUL-AUG-SEP 2021 issue

Articles due by
June 10, 2020

Please direct questions to the
 PCR Publications Manager,
 Gus Campagna at
campgus@earthlink.net
 Or phone (707) 664-8466

Contents

Reports

From the President.....4
 From the Vice President.....5
 From the Editor.....6
 Membership Missives8
 Contest Report.....9
 International Rail Fair (cancellation).....10
 Sugar Pine Centennial (2021 PCR Convention).....11
 Clinicians Wanted.....13
 Helper Service.....14
 Achievement Report.....15
 SIG Report.....21
 Daylight Report.....34
 Coast Report.....35
 RED Report.....36
 Sierra Report.....37

Feature Stories

2020 PCR Awards.....1
 Library Of Congress.....18
 The Answers Are Out There.....20
 Backdrops.....22
 Tales Of The Santa Cruz Northern.....24
 Multi-Scale Modeling.....29
 Looking Back.....31

Regular Goodies

Call Board.....2
 Statement of Publication.....3
 Membership Tracker.....3
 Welcome New Members.....8
 NMRA Membership Renewal Form.....17
 Time Table.....38
 Membership Gauge.....40
 In Memoriam.....40
 Club Information.....42
 Web Announcement.....46

PCR Membership Tracker

<u>Division</u>	<u># Members</u>
Coast	386
Sierra	252
Redwood Empire	127
Daylight	103
Total PCR Members	868

From The President



By Chris Palermo

Dealers are a cornerstone of our hobby. Many of us were fortunate to have regularly visited the local hobby shop in the earliest days of our participation in model railroading. For my youth in the Bay Area in the 1970s, it was San Antonio Hobby Shop in Mountain View and I have fond memories of wandering its aisles on long summer afternoons. Now I patronize The Train Shop in Santa Clara, which reopened recently after three months' closure. Brick-and-mortar shops are now a rarer sight, but virtual opportunities to find dealers abound, and either way, there are plenty of opportunities to find stores and products to help us pursue our modeling passion.

Many owners of hobby businesses started as hobbyists. In many, the modeling passion still burns, in competition or cooperation with the business motive. In others, the spirit to promote social modeling is strong and they are great supporters of NMRA. Still others, notably Resin Car Works, publish blogs to share their knowledge of prototype practices, the historical development of cars or locomotives that they offer, and even manufacturing details or the supply chain. Several retailers are members of PCR and regularly sell merchandise at conventions to support us.

State and county stay-at-home orders, and concerns over our health, have been hard on many of us, but it is also an opportunity for modelers to re-visit their collections of unbuilt kits, unused rolling stock or other incomplete hobby projects and relieve the dreariness of the orders and the fear of infection. At the same time, the pandemic has been tough on many dealers, retailers, and manufacturers, especially the rugged souls who make significant income from appearance at train shows. Virtually all train shows and conventions, including enormous enterprises like NMRA 2020, have been forced to cancel or reschedule. Simultaneously, many working hobbyists were laid off or furloughed, or just concerned about income, and so suspended spending on the hobby, taking a wait-and-see approach. For some sellers or manufacturers, this represents an existential threat. While the normal progress of time always sees dealers or vendors retire, sell or otherwise close, our hobby would suffer significantly if we had far fewer retailers or manufacturers.

We can fight the threat of vendor and retailer extinction in several ways. Once train shows and conventions resume, we can attend them, hopefully with lengthy want-lists that we created during this enforced hiatus. We can support retailers as soon as they reopen—I shopped at The Train Store on June 9, its first reopening date. We can contact shuttered dealers and inquire about mail orders, curbside pick-up, or other options other than entering the store. A regular monthly order, even \$25 or so, can really help these sellers.

New members of NMRA and PCR also are a foundation of our organization, and meeting and learning about them is one of the best benefits of membership. I'm pleased that PCR recently rolled out its Buddy Program to connect newer members with others in PCR that can advise and mentor them. Having a PCR Buddy doesn't mean you'll have someone to work on your layout for free whenever you need help. However, it does mean you'll have someone you can phone, email, or video chat with to exchange information, ask about techniques, or get information about the organization.

I am also delighted at how our divisions have embraced virtual meetings, clinics, and layout tours. Many have been held in several different divisions and overall, the quality has been high. NMRA also promptly launched its NMRA-X Virtual Convention effort and I am pleased that PCR members, including MMRs, are supporting these sessions. Video meetings are not perfect and technical issues can hamper the presentation—but what's important is that people across NMRA are trying to remain connected and share information. We should support all of them. Please consider contributing a show-and-tell item, a layout tour, a clinic, or organizational help to the virtual meetings occurring in your division. If you're not sure whom to contact, reach out to me. And thanks to all of you who attended PCR's annual business meeting on the Zoom platform in late May, or the Board of Directors meeting in late April.

Continued on page 5

From The President ct'd.

These meetings ran perfectly, and we were thrilled to have so many members participate.

Last, I am pleased to announce that PCR will be co-sponsoring video productions on YouTube produced by PCR member John Abatecola and his TSG Multimedia business. These are high-quality, well-produced layout tours, interviews, panel discussions, and clinics. Since John is based in San Jose, many TSG videos feature PCR luminaries, including MMRs like Jack Burgess and Dave Connery. And while many model railroading videos require a paid subscription with organizations like Kalmbach or Model Railroad Hobbyist Magazine, you can watch TSG videos on YouTube for free. Yes, you'll be interrupted periodically by ads, but that's a minor inconvenience to keep this valuable platform available. Please join me in becoming one of TSG's more than 30,000 subscribers and fans on YouTube.



From The Vice President



By Frank Markovich, MMR

At this time I was looking forward to the PCR in Concord. Not only was that cancelled, but West Side Reunion, Sierra Seminar, O Scale West, The National Narrow Gauge Convention, the NMRA national, and all the regional events that have been cancelled. Who knows what else?

I am looking forward to when this is over.

For West Side and the Sierra Seminar, the plans are for April 17th for West Side and April 18th for Sierra Seminar. Both will be held at the Sonora Senior Center.

The next year's PCR convention will be in Fresno. It should be a great convention. I expect lots of models. I am also looking forward to other events next year.

Our family had planned a vacation in Hawaii and I was looking forward to meeting some of our Hawaii PCR members. We had to cancel due to the shelter in place. Maybe a year from now.....

I have tried to look into doing online clinics and they may still happen. In fact, I gave one to the Coast Division online a couple of weeks ago and will be doing an NMRA clinic next month. If you are interested in doing a Zoom or Face

Book clinic let me know. I am doing a number of online classes – some I am leading – in music.

We are now doing online judging for achievement awards. Contact Earl or myself. We have issued two Golden Spike awards so far and have a couple of others in process. *(Editor's Note: See "Achievement Program" on page 15)*

If you have comments or ideas contact me at frank@frankmarkovich.com

Frank



From The Editor



Chip Meriam, Editor

I confess I was concerned about what content this issue might contain. That's not to say I had worries about maintaining our "family oriented" image. My concern was whether or not there would be any content at all. You see, along with the rest of you, I was observing cancellation after cancellation of just about everything throughout the NMRA. How would all this bad news and uncertainty affect the normal flow of idea sharing, division reports, event promotion, and every other bit of input upon which the *Branch Line* is built?

As it turns out, my concern was unnecessary. We still have reports from each our four divisions. We have news of seven of our fellow PCR members receiving recognition for their service to the hobby over the past year. Updates and encouragement come our way from our President and Vice-President. There are words from our Membership Manager, Achievement Program Manager, Contest Manager, and Special Interest Group Manager. Our stable of regular contributing authors has been busy preparing their latest episodes for your consumption.

We also have two articles that came in "over the transom" from new contributors. Please be sure to see "Multi-Scale Modeling" by Ed Loizeaux and "The Library Of Congress" by Lou Anderson. And we have another "Nothing Is Good Enough" offering from Mike Hamm.

Over the past three months I've noticed two common themes: First is the frequent recognition of our hobby as one that can **AND SHOULD** be enjoyed when so many other parts of our normal lives have been put on hold. This began to appear in our last issue in the "From The President", "Membership Missives", and "From The Editor" columns. It has also been evident in *NMRA Magazine* and the major model railroad publications of *Model Railroader*, *Railroad Model Craftsman*, and *Model Railroad Hobbyist*. In this issue of the *Branch Line*, Jim Providenza gives this topic another boost with an excellent photo essay.

Second, is the perseverance and adaptability of our membership - especially as it relates to staying together. Most of this is evident in an almost universal adoption of Zoom as a virtual meeting platform. The most recent PCR Board of Directors Meeting and the PCR Annual Business Meeting were both held remotely using Zoom. In fact, Zoom is mentioned in each of the four division reports as well as several other places throughout this issue.

The current "mitigation measures" affect me the most vis-a-vis their seeming tendency towards self-isolation. Bucking this tendency requires a bit of effort - constant effort. Working on this issue of the *Branch Line* has afforded me the chance to interact with each and every contributor, thus making my effort a bit less, well, effortless. My thanks to all of you.

A handwritten signature in black ink, appearing to read "Chip Meriam".

Have you changed your address or other membership information?
Notify Headquarters
Email: nmrahq@nmra.org
Phone: 423-892-2846 (8am—4pm ET)

IMPORTANT !!!!

“Awards” from page 1

President, Chris Palermo, presented the PCR Member of the Year to **Earl Girbovan**.



Special “Thanks” for these awards to Mike Kotowski for the magnificent print of his original art work showing an SP steam locomotive passing through Pinole. Thanks also go to Bill Scott for the matting and framing of these beautiful prints and for Eric Moe for engraving the plaques.



The John Allen Award is the very prestigious award to someone who best exemplifies the exceptional, self-less support for the hobby of John Allen, perhaps the best know modeler in all of PCR history. The award was conceived and first presented by the Gorre & Daphetid Operators. Today, all those who have previously received the John Allen Award make the selection. This year’s selectee is **Doug Wagner**, PCR Membership Chair, member of the Golden Empire Historical and Modeling Society (GEHAMS) and active supporter of Daylight Division.

Chris Palermo also announced that the NMRA National President’s Award for Service to the Division went to **Chip Meriam**, Sierra Division Superintendent, PCR Secretary and Editor of the *Branch Line*.



Congratulations to each of these winners, and thank you for all you do from all PCR members.





Membership Missives

by Doug Wagner, PCR Membership Manager

I would like to apologize to each Division Membership Manger of the Pacific Coast Region. Apparently, as I was learning how to use Microsoft Outlook to send out the monthly division membership reports through emails with the attached reports to each membership manager, the same email went out approximately 3 times - maybe more, for some of you. But I think I have Outlook figured out, finally - I think.

Anyhoo, I would like to welcome aboard, as the two newest members of the Daylight officers' team, Mike O'Brien, of Bakersfield, as the newly appointed Superintendent; and Ed Merrin, of Santa Rosa, as the newly appointed Director. Both volunteered for the jobs after no one else wanted the positions (sorry, I have too many irons in the fire, already, and I have been there and done that - but thanks for asking, anyway!). Thank you, Mike and Ed, for stepping up to the plate!

I hope everyone is coping as best as possible with the Covid 19 quarantine orders. It appears that things are starting to look up with Stage 3 openings happening. So, your favorite train or hobby shop and model train club should be opening up soon. I have taken this opportunity to actually get started on scenery on my N scale home layout. I hope you folks took advantage to get some things accomplished with your model railroading. I have started with the most difficult task first, which is to construct the downtown portion of Porterville. It entails assembling the many kits that I have accumulated over the last quarter century! As an added bonus, I have gained shelf space for storage by assembling these building kits. I hope to have photos for the next issue of the *Branch Line* on my progress, as the buildings are still on my work bench awaiting final detail installations, interiors, roof details, plus the grade crossing for Main Street, Porterville. So yes, stay-at-home orders were just what I needed. I could not fulfill all my obligations to GEHAMS, Daylight, PCR, etc. etc. But I did get caught up with sending out welcome letters to our newest members. I'm still trying to get what emails we have corrected and to get members who let their membership lapse come back to us. We will see if it was worth the effort.

With Mike and Ed on board, we will begin having some Zoom meetings to get Daylight back on track (pun intended). I am sure Mike and Ed will bring you guys up to date on Daylight Division stuff as they settle into their new positions.

I need to get back to work on my Porterville scene on my home layout. So that's it for now.

May all your signals be green as it is time to high ball!



Welcome Aboard ! PCR's Newest Members

Member	City, Sate	Date Joined
Daylight		
Cindy Schueler	Clovis CA	4/9/2020
Ronald Blakey	Arroyo Grande CA	5/5/2020
Coast		
Paul Muther	Aptos CA	4/3/2020
Donald Bitz	Brentwood CA	5/11/2020
Cydney George-	San Jose CA	5/25/2020
Fred Sotcher	San Jose CA	5/29/2020
Sierra		
David Carico	Weed CA	4/9/2020
Luis Laur	El Dorado Hills CA	5/5/2020

Contest Report

by Pat La Torres, Manager, PCR Contest Department



MODELING IN PLACE

Well folks, like most, if not all of us in the PCR, I've been pretty much sheltering in place. The big difference in my case is that I'm one of those "essential workers", so I haven't been able to stay at home during the week. I have had to go out in the world and deal with all the regular issues in my trade. But like the rest of you, I have been staying at home on the weekends and trying to get some modeling done. A nice part of that, one that I've been finding myself looking forward to, is the regular Saturday morning Coast Division Zoom get togethers that Phil Edholm has

been hosting. And this is where I will lead into the modeling and contest part of our shared experience.

The three big disappointments for me this year have been missing the PCR convention, the PNR convention (which had been a bonus convention for me, this year) that was cancelled, and the NMRA National Convention in St. Louis – which I had REALLY been looking forward to. In each case, in addition to all of the other convention activities, there were the modeling and photography contests. For those that have not yet made it to either a regional or national convention, the contest room is always a place of wonder. Not just because it gives those of us with contest entries a chance to share what our creative juices have wrought, but also because we get to see what other creative minds have brought to share.

As I mentioned, during my time in isolation I've been pushing myself on a couple different projects. Like most model railroaders that I know, I have far too many projects waiting for my attention, but I've managed to force myself to try and focus on just two at a time – though the mind has still been keeping an eye on a few others. Each of these projects require a continued focus, or they can get lost in the muddle. Beyond that there remains the joy of actually building something. This brings me back to my mention of the Coast Division Saturday morning meetings. A big part of that is, beyond the pre-scheduled activities, video layout tours and such, everyone in attendance has an opportunity to share what they've been working on, covering a wide range of modeling topics.

And this brings me to what I'm hoping to touch on with this issue. While I've fallen into the position of Contest chair for the PCR, I feel that my focus has and will continue to be more of Modeling Facilitator. That is, while the modeling and photography contests have always seemed to be a part of the NMRA (at least as far back as I can remember), I've always looked at these contests as more of an incentive to keep building things – or taking photos – rather than "competitive modeling". This gets to the core of what I'm looking at when I enter a model or photography contest. It's not about "beating" anybody, it's about my "modeling thoughts" and learning things from others. Yes, the pretty plaques are nice, but I didn't get into this hobby to cover my walls with chunks of wood, or collect enough certificates to wall-paper my model railroad room. I got into this hobby to build and run model trains and the associated models and scenery items.

That is what I want my focus as regional Contest Chair to be. I want to encourage folks to push themselves just a little bit further on each model they build - more than they did on the last one. Try to learn one new technique. Try to build a model that is maybe just a bit more difficult than the last one. When all is said and done, this hobby has a great potential to be a learning experience. The biggest feature that sets model railroading apart from the other modeling hobbies – aircraft, cars, ships, etc. – is that our models have the potential to be dynamic, moving and living miniatures! Even buildings and other structures have the potential to be alive, or give life to the scenes that we create.

Continued on page 10

Contest Room ct'd.

So even if you've never built a model that you thought of as "contest quality" in the past, you may be surprised how good it is when presented in a positive light. Along with this, the contests can work as an effective adjunct to the NMRA's Achievement Program. Actually, I see the contests as one path into the A.P., as an opportunity to take steps in that direction without committing entirely to the A.P. at the beginning. If anyone reading this wishes to start down this road, I will do whatever I can to help provide some counsel and guidance in that direction. Needless to say, there are several other modelers in this region who are willing and possibly better qualified to help on this journey, but we all want to encourage any and every member to look at this as a way to grow in the hobby.



Earlier this week the IRF Committee made the difficult decision to cancel the 2020 IRF show. This is due to the COVID-19 pandemic and all the current restrictions. At this time it is impossible to plan and execute a successful show. One example is our inability to get a quote for event insurance at this time.

So there will be no show in 2020 and this means there will be no Railfair income for any of the 4 sponsoring clubs. By canceling at this time the committee did not lose any of the security deposit on the Scottish Rite Hall and has not spent any money on 2020 advertising (there is no need for Railfair flyers when all the hobby shops are closed). Railfair has rolled over the security deposit and has a reservation for the Scottish Rite Hall for October 9-10, 2021. So all our faithful Sierra Division volunteers that staff the ticket booth, info table, Timesaver, etc. get a year off.

We look forward to a great 2021 show and everyone's participation next year. In the meantime stay safe and healthy.

Ed Pultz, Sierra Div IRF Director



International Railfair Model Railroad Show - 2021

May 12 at 3:52 PM · 🌐

2020 INTERNATIONAL RAILFAIR CANCELLED - We regret to announce that our upcoming fall 2020 International Railfair show is cancelled.

We hope that all of you stay healthy and safe and we look forward to seeing you all on Oct. 8-9, 2021 at our 2021 show.

Please note that our Facebook page will continue to be updated throughout the year as the shelter in place orders lift and participating Club members can get together once more to share the hobby we all love so much.



The members of the Daylight Division are proud to present the Sugar Pine Centennial 2021 Pacific Coast Region Convention from Thursday, April 22 through Saturday, April 24, 2021.

Because the NMRA National Convention, Rails by the Bay, will be in Santa Clara, July 4–10, 2021, this year's convention is a "mini-convention." What the heck is a "mini-convention?" you ask. Well, it's a three-day event, instead of the usual four days.

Packed into those 3 days will be a veritable smorgasbord of model railroading activities that you've come to expect at PCR conventions, including clinics, contests, excursions, layout tours, operating sessions, banquet, and more!

The Sugar Pine Centennial 2021 PCR Convention hotel is the Wyndham Garden Fresno Yosemite Airport, 5090 East Clinton Way, Fresno, conveniently located adjacent to the Fresno Yosemite International Airport. This facility offers modern comfortable accommodations and complete convention services under one roof.



The convention committee is planning a full slate of activities, including clinics, contests, layout tours, excursions, and much, much more for the enjoyment and entertainment of its fellow PCR members, spouses, and family members.

John Houlihan
Convention Chairman

<http://www.pcrnmra.org/conv2021/index.html>

REGISTRATION FORM ON NEXT PAGE





Sugar Pine Centennial 2021

PCR/NMRA 2021 Convention
 Hosted by the Daylight Division
 Wyndham Garden
 Fresno Yosemite Airport
 5090 East Clinton Way, Fresno, CA
 April 22—24, 2021

RETURN FORM AND PAYMENT TO:

NMRA / PCR
 c/o Doug Wagner
 14008 Tierra Blanca Ave
 Bakersfield, CA 93314

E-mail: SPC2021registrar@pcrnma.org

Website: <http://www.pcrnmra.org/conv2021>

Visit website to pay with PayPal or credit card

Please Print

Registration Form

Last Name		First Name		Name for Badge		
Address			City		State Zip Code	
Home Phone		E-mail Address			NMRA #	
Registration Type (Please check one) <input type="checkbox"/> Model Railroader <input type="checkbox"/> Non Rail or Spouse <input type="checkbox"/> Youth <input type="checkbox"/> Child <input type="checkbox"/> Day				NMRA Region (if other than PCR)		
Available to Volunteer on <input type="checkbox"/> Thursday <input type="checkbox"/> Friday <input type="checkbox"/> Saturday Times:						
I can help More. Have a Volunteer Coordinator contact me <input type="checkbox"/>						
Primary Scales and Interests		<input type="checkbox"/> HO <input type="checkbox"/> N <input type="checkbox"/> Z <input type="checkbox"/> S <input type="checkbox"/> O <input type="checkbox"/> G <input type="checkbox"/> Narrow Gauge <input type="checkbox"/> Other:				
What railroad(s) do you model?						
ADDITIONAL REGISTRANT LIVING AT SAME ADDRESS (Use another form for more than 1)						
Last Name		First Name		Name for Badge		
Registration Type (Please check one) <input type="checkbox"/> Model Railroader <input type="checkbox"/> Non Rail or Spouse <input type="checkbox"/> Youth <input type="checkbox"/> Child <input type="checkbox"/> Day				NMRA #		
Available to Volunteer on <input type="checkbox"/> Thursday <input type="checkbox"/> Friday <input type="checkbox"/> Saturday Times:						
I can help More. Have a Volunteer Coordinator contact me <input type="checkbox"/>						
Primary Scales and Interests		<input type="checkbox"/> HO <input type="checkbox"/> N <input type="checkbox"/> Z <input type="checkbox"/> S <input type="checkbox"/> O <input type="checkbox"/> G <input type="checkbox"/> Narrow Gauge <input type="checkbox"/> Other:				
What railroad(s) do you model?						
All Fares - except Day Fare - include clinics, layout tours and Saturday Banquet						
FARES: Please fill in QTY and Total				QTY	Unit Cost	Total
Early Bird Registration (Ends 12:00 AM - at midnight - 12/31/2020)					80.00	
Full Fare Registration (Begins 12:00:01 AM - 1 second after midnight - 01/01/2021)					85.00	
Non Rail or Spouse Registration (may be modeler)					65.00	
Youth Registration (12 - 18 years. Must be accompanied by an adult)					65.00	
Child Registration (Under 12 years. Must be accompanied by an adult)					30.00	
Day Fare (No Banquet) Thurs Fri Sat (\$30.00 for each day)					30.00	
Saturday Banquet Only					30.00	
Polo Shirt S M L XL					TBD	
Polo Shirt 2XL 3XL 4XL					TBD	
Sugar Pine Railroad Excursion					TBD	
Hillcrest Railroad Excursion					TBD	
Convention Car--HO scale Sugar Pine RR log car					TBD	
Join the NMRA		9 month Rail Pass(allowed one time only)			20.00	
		Full NMRA membership (includes monthly magazine)			78.00	
Payment by <input type="checkbox"/> Check** <input type="checkbox"/> Cash [Use website for credit card]					TOTAL:	
** Make Checks Payable to: "PCR / NMRA" No Refunds After March 30, 2021						

COME. LEARN. SHARE...

MODEL RAILROADING IS OUR PASSION

Have you learned a special technique for your model railroad or while building or weathering some of your rolling stock? Would you like to share some of that learning with other model railroaders? Please consider giving a clinic at a model railroad convention.

Sugar Pine Centennial 2021 Pacific Coast Region Convention will be held in Fresno, CA from Thursday, April 22 through Saturday, April 24, 2021. Bruce Morden, Clinics Chair for the convention, would love to hear from you that you have something to share.



We are planning for a full slate of 22 clinics. There will be two rooms of clinics on Thursday, Friday and Saturday. We are hoping for some hands-on clinics where you can practice your modeling skills or learn some new ones.

Clinics are typically 45 to 50 minutes long. If you have something to share, please contact Bruce at spc2021clinics@pcrnmra.org.



And if you really enjoy giving clinics and want to step up to the next level, the National NMRA Rails to the Bay convention is coming to Santa Clara July 4, 2021-July 10, 2021. Bruce is the clinic chair for the National as well so if you want to practice in Fresno you can present again in Santa Clara. You have more than a year to prepare. For Santa Clara, we are looking for clinics with a definite prototype flavor so anything about your favorite prototype is fair game. We are planning for over 250 clinics spread over the Sunday to Saturday run of the convention.

If you have an interest in presenting a clinic at Santa Clara, please contact Bruce Morden at bdmorden@sbceo.org

HELPER SERVICE

My name is Mike Hamlin, of the Sierra Division. My brother, a fellow model railroader, recently passed away. He left a large collection of N scale locomotives and rolling stock. Most items are brand new and never used, but they are not in the original boxes. Those that are not brand new were only used when he and his club went to shows.

Available for sale are:

1. Over 40 new and used DCC locomotives; including 25 BNSF, 10 UP, and a few assorted SP
2. Over 200 rolling stock; including over 100 box cars; 25 tank cars; 28 stack well cars; 50 covered hopper cars; misc flat cars with pipe loads; gondola cars; and trailer cars
3. Over 100 passenger cars; including California Zephyr, Amtrak car haulers; 40 Amtrak cars (including sleepers, dining, coach, dome, and baggage cars);
4. SP Daylight set, including locomotive w/17 cars
5. UP Excursion train, including locomotives, B units and 19 cars

I am currently working on a spread sheet with exact items and pricing.

If interested, call 530-515-3560 or email at Hamlin@snowcrest.net and ask for prices. If you call, leave a voicemail, as I screen calls from unknown numbers, and I will call you back.





Achievement Program - Virtual Judging & Evaluation

By Jack Burgess, MMR, Manager, PCR Achievement Department

With the “stay at home” and social distancing rules brought on by the COVID-19, Frank Markovich, Earl Girbovan, and Chris Palermo developed a virtual judging and evaluation program for the Achievement Program for the Pacific Coast Region of the NMRA. They are pleased to announce that they are offering virtual judging and evaluation of models and other items that members have prepared to meet the goals or requirements of the Achievement Program.

If you wish to have a model or other item judged or evaluated on a virtual, remote basis using online media, or if you need help with forms or documentation for a model or AP Certificate, please contact any of them; their contact information is here in the **Branch Line**. For information on AP categories and award requirements, please visit the NMRA website at:

<https://www.nmra.org/education/achievement-program>

Evaluations and Judging Available Now

Judging is available now for many Certificates. In general, the plan is for you to prepare the documentation as you would normally do for a contest entry or Statement of Qualifications (SOQ) and then add photos or a video showing the details. Judging will be done by reviewing the supplied materials. You may be asked to do a video call via Skype or Zoom to clarify some items. Details by category are below:

Golden Spike Award

The Golden Spike Award is an introductory award in the AP and almost anyone who has built a layout, or a set of modules, will qualify for this award. From a high level, what you need to qualify is to display six items of rolling stock, show the completion of sections of model railroad setting, show completion of three different kinds of trackwork, and electrical operation. Once you have verified that you have met the requirements, you will need to do the following:

1. Prepare a summary of your items that satisfy the requirements. This can be in an outline form.
2. Using the summary as a script, create a cell phone video showing each of the items.
3. Post the video on YouTube or other location that the judges can view it.
4. Submit a pdf of the paperwork to the judges.
5. The judges will review the paperwork, watch the video, and assuming all the requirements have been met, sign the Golden Spike Award form and return it to you.

Master Model Railroader Categories

Master Builder – Cars

In addition to the contest paperwork, include a sufficient number of color photographs to show the features of the model and the details.

Master Builder - Structures

In addition to the contest paperwork, include a sufficient number of color photographs to show the features of the model and the details.

Master Builder - Scenery

In addition to the Statement of Qualifications (SOQ) paperwork, include a video of the scenery to be judged. Like in the Golden Spike award, an outline and accompanying narration of the scenery and the features would be very helpful for the judges.

Continued on page 16

Achievement Program ct'd.

Model Railroad Engineer - Civil

In addition to the SOQ form, the requirements call for being able to run a locomotive through the trackwork. Include a video of the trackwork submitted such that the number of feet of track can be verified, and also show in the video a locomotive running through the scratchbuilt trackwork. Note that it's not necessary for the locomotive to run through ALL of the trackwork, only the scratchbuilt items. This can also be done with a Skype or Zoom call.

Model Railroad Engineer - Electrical

In addition to the SOQ form and associated paperwork, include photos sufficient to document the items you are demonstrating. This can also be done via a video or a Skype Zoom call.

Master Builder - Prototype Models

Master Builder – Motive Power

These categories are not available for virtual judging at this time. If you want to submit something in one of these categories, please contact one of the people above for submittal instructions.

Other Categories

The Chief Dispatcher, Volunteer, Official and Author categories are mostly documentation. They would be happy to help with advice on getting any of these awards, paperwork and validation.

I am pleased to announce that Chris Palermo has received a Gold Spike Award (which was done via the above described online process).

In addition, the following Certificate of Achievement awards have been presented since the last issue of the **Branch Line**:

Steve Harvath - Master Builder – Cars

Robert Osborn - Association Official

Congratulations to Chris, Steve, and Robert!

If you are interested in the AP Program or Golden Spike Program, contact me for more details. My phone number, address, and e-mail address are listed in the Call Board on Page 2.



Improve your modeling with a few sheets of paper.

That's exactly what happens when you participate in the National Model Railroad Association's Achievement Program. One Merit Award here, another there, and pretty soon you're on your way to becoming a Master Model Railroader. All the while learning and having a ton of fun.

The Achievement Program is modelers helping modelers become better modelers and get the most out of their hobby. And it's yet another benefit of NMRA membership.

Visit www.nmra.org. Then improve your skills. And your hobby.

We make it even more fun.
www.nmra.org
423-892-2846

The advertisement features a stack of several 'National Model Railroad Association Merit Award' certificates. One certificate is prominently displayed in the foreground, showing the text 'National Model Railroad Association Merit Award' and 'Certificate of Achievement'. The background shows a stack of similar certificates. The NMRA logo is also visible in the bottom right corner of the advertisement.



NATIONAL MODEL RAILROAD ASSOCIATION, INC. ®

P.O. Box 1328
Soddy Daisy, TN 37384-1328
Phone: (423)892-2846 Email: nmrahq@nmra.org

RENEWAL NOTICE

Name:			
Address:			
City:	State/Country	Zip:	
Phone:	Birth Date:	Scale:	
Email:	Occupation:		

NMRA Membership	1 Year	2 Year	Total
Member with NMRA Magazine Subscription ~ All Rights and Benefits; includes NMRA Magazine.	\$ 75.00	\$ 150.00	
Member without NMRA Magazine Subscription ~ All Rights and Benefits; <u>does not</u> include NMRA Magazine.	\$ 47.00	\$ 94.00	
Family ~ Spouse or minor child of above member in good standing; DOES NOT include the NMRA Magazine or voting rights. Name: _____ DOB: _____	\$ 9.00	\$ 18.00	
Student ~ Anyone under 18 years or student between 19-25 years of age. All rights and benefits and includes NMRA Magazine. DOB: _____	\$ 40.00	\$ 80.00	
Sustaining ~ Mandatory for group memberships (Clubs, Associations, Businesses) All Rights and Benefits and includes NMRA Magazine.	\$ 120.00	\$ 240.00	

Total Due	NMRA Membership	\$
	Region Subscriptions	\$
	Merchandise Total	\$
	NMRA Donation	\$
	Total	\$

Credit Card No: - - - Verification Code

Expiration Date: _____

**We accept MasterCard, Visa, Discover & AMEX. US Funds Only.
Make checks payable to NMRA.**



The Library of Congress Historic American Building Survey

A Great On-Line Resource for Model Railroad Structure Plans

by Lou Anderson , Sierra Division, PCR



Lou Anderson

(Note: An earlier version of this article appeared in the August 2018 NMRA Northern Utah Division Promontory Post. The article has since been significantly updated and modified.)

For model railroaders who enjoy building structures there is an excellent on-line resource you may not be familiar with. It can be a great help in your research, especially if you are building a structure from scratch.

That source is the US Library of Congress and it houses the Historic American Building Survey, the Historic American Engineering Record and the Historic American Landscapes Survey. It is always one of my first stops when starting a new project or I just need some inspiration on what to build next.

The Library of Congress searchable database contains over 40,000 surveys with almost 600,000 measured drawings, photographs, and written histories for historic structures and sites throughout the United States and its territories. There is a wealth of information and it is all free. To make it even easier, all three can be searched at the same time. The URL is <http://www.loc.gov/pictures/collection/hh/>

The information comes from, as mentioned above, the following sources:

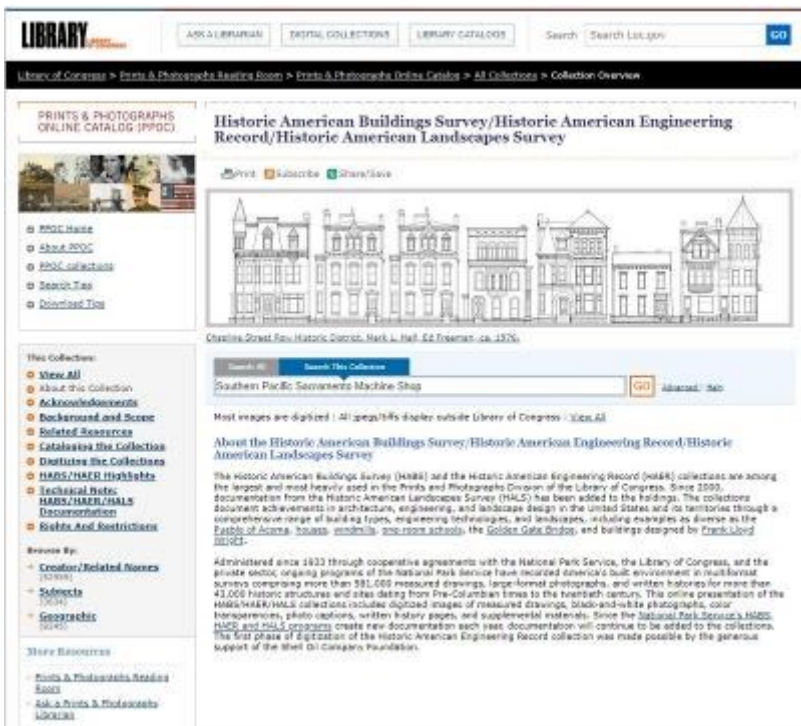
- Historic American Building Survey (HABS)
- Historic American Engineering Record (HAER)
- Historic American Landscapes Survey (HALS)

While the surveys are housed in the Prints and Photographs Division of the Library of Congress the three surveys come primarily from the National Park Service's Heritage Documentation Programs. This is the oldest federal preservation program and comprises the largest archive of historic architectural, engineering, and landscape documentation in the US.

While not all surveys are digitized, those that are can include measured drawings, black-and-white and color photographs, photo captions, written histories, and supplemental materials. Even if a survey has not been completely digitized, many have sufficient information to give the modeler a good starting point for building a scale model of the prototype.

If the building you are searching for has not yet been digitized, a copy can be ordered from the Library of Congress for a fee. The fees will vary based on the number of pages in the document and number of photos requested. The ordering instructions are on the website.

Most of the surveys contain photos, usually in black and white, of the buildings and some do have color transparencies (government speak for 35 mm color film slides.) About half contain some scale drawings, but many just have a site plot plan. However, with a bit of luck a survey will include floor plans, side elevations, roof layouts and other information such as detailed drawings of unique architectural details or construction methods. Some also include data pages, in-depth histories and captions for each photo.



Continued on page 19

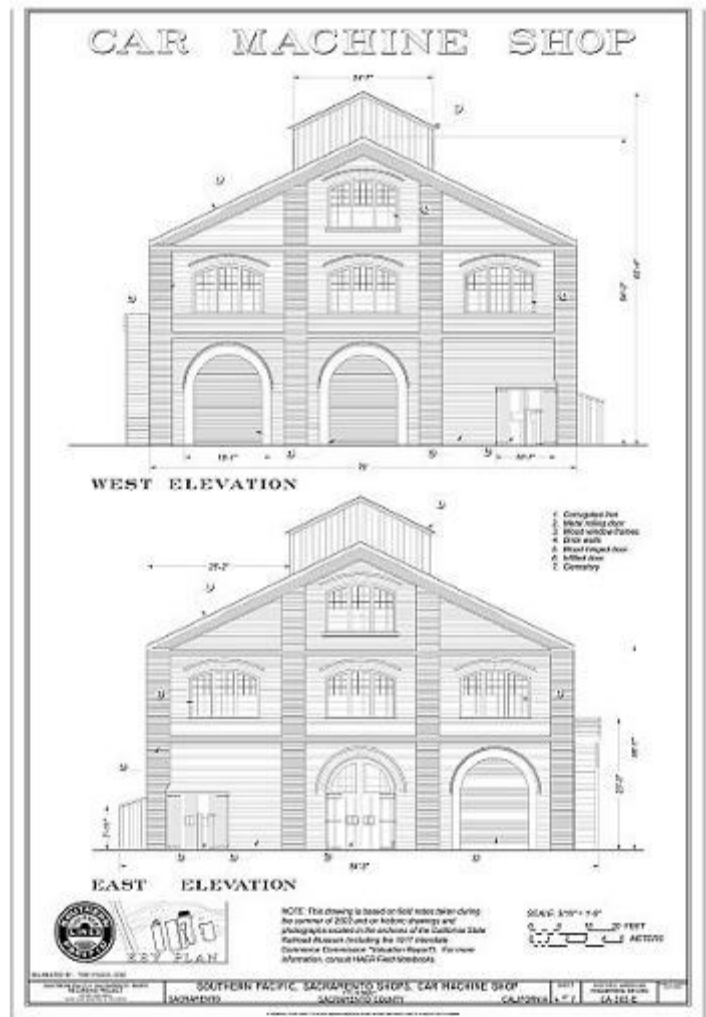


To search the Library of Congress survey collection, just enter a name or description of what are looking for and hundreds of matches will usually appear. While a search by date or time period is not available, a geographical search can be made simply by entering the location, place name, city county or state. This will result in all surveys from that locale.

For example, you may be looking for information related to a specific building, such as the Southern Pacific's Sacramento Machine Shop. Enter that information in to the search field and up will come 22 photos and 14 measured drawings. That should be enough information to earn 87½ points in Merit Judging at the next contest.

There is also an advanced search option allowing searches to be limited by several criteria, such as searching only the title field, matching all words, any words or an exact phrase or variants of them. I seldom use this feature but it can be helpful if an initial search results in a large number matches. There are also search tips and help button available.

So next time you are considering a scratch building project, try starting with the Library of Congress website. The HABS/HAER/HALS is a wealth of information that can be of great assistance to the model railroader. Even if you are not looking for specific historical structure, it is a great place to find ideas and inspiration for your next modeling project.



The Answers Are Out There

By Robert Pethoud

Cascade Nail and Tack, Part 2



When we stopped work last time, the front wall of Cascade Nail and Tack Company, Incorporated had been sheathed with weathered, 8-inch wide boards, and the window and door castings had been prepared for installation. The photo this time shows the result of more construction and finishing, so let's see how we got to that point.

A cornice—a horizontal decorative molding at the top of a wall—adds a distinctive and appealing touch to an otherwise plain building. I designed the cornice for

Cascade Nail to take advantage of

the 1/8" basswood cove molding I found at my local hobby shop. It was probably intended to decorate a miniature dollhouse. I cut several pieces 3/32" wide from the molding and then cut the two horizontal top pieces for the cornice from 1/32" basswood sheet. I wanted the cove pieces to mount to the wall on something thinner than 1/32" (scale about 3 inches), so I cut a piece from a sheet of Strathmore Bristol smooth surface, heavy weight (270 g/m²), which I bought at Michaels and which measures about 1/64" thick (scale 1.4 inches). Before gluing all the cornice pieces together, I colored them with PanPastel 740.3 Burnt Sienna Shade, which is a dead ringer for the Rust-Oleum Gloss Chestnut I used earlier on the window and door castings.



PanPastel colors are artist quality pastels which the manufacturer describes as "highly pigmented," with "excellent light-fast ratings," featuring "an ultra soft, low dust formulation," and come "packed in a unique pan format (cake-like)." They are available in 92 colors and are easy to apply with brushes, makeup sponges, or Sofft Tools produced by the same manufacturer. Although they are dry, PanPastels can be mixed like paint, and they can be erased with an artist's kneaded rubber eraser. I especially like this forgiving nature and the way the underlying color can be discerned through the pastel. You can see this well on the photo of the wall, taken after I applied the green coat (640.3 Permanent Green Shade) using Sofft Tools, basically makeup sponges. A light touch on the green allowed the color variations in the stained boards to show through well.

For the trim boards on the corners of the building I wanted something even thinner than the Bristol, so I used a 3"x 5" file card. I made a sharp crease in the card, then cut a piece of corner trim using a straightedge and an X-acto knife. I actually made four of these and then colored two of them with Rust-Oleum Gloss Chestnut from a spray can and the other two with the PanPastel Burnt Sienna Shade. To apply the pastel, I held the fragile cardstock corner piece against a corner of square brass tube while pressing the makeup sponge against the card. I wanted to see which would look better, but I couldn't see much difference in the results.

I wanted a concrete foundation for my industry, but I was unsure of how best to create the right look, so again I tried two methods. For one approach I cut a piece of .010" styrene and sprayed it with Testor's Dullcote (#1260) from a can. For the other I cut a length of 5/8" square poplar, slathered one face with a coat of wallboard joint compound, let it dry, then sanded it flat and sprayed it with Dullcote also. From that point I treated both samples the same, applying PanPastel Raw Umber Tint (780.8) over all, then adding Yellow Ochre Shade (270.3) near the bottom edge, and finishing by putting on some Raw Umber (780.5) in random patches and blending it all together. The resulting color was pleasing on both pieces, but I liked the rougher texture of the wallboard joint compound better, as it more closely resembles the look of concrete. To finish the foundation, I cut two pieces of dimensioned stripwood for the buffers below the warehouse doors and colored them with two dips in the india ink and alcohol stain.

Before attaching the window castings, I cut glazing material to fit each of them from some old, exposed 35 mm film. I did not glue the glazing pieces to anything; I simply put them in place and then used Formula 560 canopy glue to fasten the window castings to the surrounding boards, thus holding the glazing in place behind them. This canopy glue dries clear and is advertised as bonding plastic parts to almost anything.

Continued on page 21

Answers ct'd.

The only thing left to do for this industry façade is to create the signage. I did that on my computer in Microsoft Word and printed it on bond paper. I cut the signs out and used rubber cement to affix them to pieces of .010" styrene sheet. You can judge for yourself the results of this experiment in construction and finishing. Now I'm motivated to finish this structure, which will require four more walls and a roof. The good news is that two of those walls will not be visible to visitors and the remaining two will only be partially visible; the completed wall is the only one which can be closely inspected.

That's it for this project featuring inexpensive techniques for building a foreground structure from scratch.

Until next time, you can reach me with comments and/or questions at pethoud@comcast.net



LD/OP SIG Report



Pacific Coast Region SIG Report

by Seth Neumann

Pacific Coast Region SIG Report for Second Quarter 2020

We had an invitational operations meet planned for late April and fantastic program planned for Concord 2020 when the pandemic hit. Obviously, those did not happen and we don't know when things will resume, especially considering our demographics.

However, we have been able to participate in some SIG activities via Zoom conferences. The Operations SIG has been holding clinics and layout tours every Sunday afternoon at 1:00 PM, see <https://www.opsig.org/Virtual> for topics and meeting information. There have been a number of other groups that have presented good layout design content including the weekly PCR Zoom calls hosted by Phil Edholm. There is a lot of good content at these meetings and it's a great opportunity to keep in touch with friends we can't see because of travel and meeting restrictions.

While the NMRA National Convention Gateway 2020 July 12-18 in St. Louis, Missouri was cancelled, we are still working on Rails by the Bay 2021 in Santa Clara in the hope that conditions will be more favorable by next summer. Please get in touch if you would like to help!

Seth Neumann



NOTHING IS GOOD ENOUGH

By Mike Hamm

Backdrops

A bare wall just won't cut it if your model railroad's benchwork butts up against the walls of your train room. For that reason, we model railroaders find it necessary to install a scenic backdrop to add realism and depth to our layouts.

Backdrops fall into two categories: painted or photo. There's no question that photo backdrops are the most realistic, especially when photographed from a low angle. But I always admired those layouts with hand painted backdrops. I enjoy seeing modelers with little artistic skill (or none at all, such as myself) attempt to paint their own backdrop. While their results are neither perfect nor a true work of art, they manage to obtain reasonable success with a custom painted backdrop of which they can be proud.

When I say I have no artistic talent I mean absolutely none. In grade school I didn't like finger painting, crayons, or modeling clay. I couldn't even draw stick figures! When faced with the four bare walls in my new train room I had three options: One, I could roll out a store-bought photo backdrop, slap some glue on it, and be done. Two, I could pay a professional artist to come in and paint it for me. Three, do it myself.

My wife, Marsha, was an art major in college. She could have done a much better job painting the entire backdrop. But with her health



Mountains By A Trained Artist

problems, she was only able to paint one small section. As you can see from the photograph, formal training with natural artistic ability leads to a lot more detail and quality in the backdrop. I dreaded attempting to paint my own backdrop because I had no formal training. But my advice to other model railroaders is to not be afraid to try something you've never done before.

Fancy, expensive equipment and materials are not necessary. I painted my backdrop entirely with house paint from The Home Depot. I used the small sample jars which are available in hundreds of colors. I bought a used 1/4" artist's brush for a dime at a yard sale and painted the entire backdrop using only that brush and an old paint roller. I completely wore that little brush down to a stub. I continue to keep it as a reminder of how much fun I had doing the artwork myself. How surprising it was to find out that the most dreaded part of building my model railroad, painting the backdrop, turned out to be the most enjoyable.

My railroad, The Glacier Mountain Railroad, served by The Great Northern Railway, is located near Glacier National Park in Montana. It needed painted glacier mountains. To make them stand out I used 1/2", 1" & 2" foam insulation board glued to my drywalls with foam safe construction adhesive. The 1" & 2" foam was used near the bottom for the hills. Artist's gesso, a thick coating, can be used before painting to hide any texture or pattern in the foam board. I cut the outlines of both the mountains and the foothills with an old steak knife I bought at a yard sale for a quarter. Once again, fancy tools aren't needed.



My Second Try At Clouds

Continued on page 23



Land Form Cut From 1/2" Foam Insulation Board



Glacier Mountains Cut From 1/2", 1" & 2" Foam Board

Many model railroaders say that a good backdrop should not draw attention away from the trains and, for that reason, they leave their backdrop with plain blue sky and a little haze near the horizon. But in real life the sky is full of clouds and there are distant mountains with foothills & trees.

Clouds are difficult and are the number one way to tell if a backdrop is hand painted or a photo. If clouds and landforms are necessary for your backdrop you might need to take some art classes which would not only be fun but might also help you with your other scenery skills. I do recommend that you keep a can of sky-blue paint and roller handy so that you can start over if you goof.



After A Bit Of Training From TV Artist, Bob Ross

Calling on your friends to drop by and help with the work is excellent fellowship for which there is no substitute. But for me the real enjoyment of this hobby is figuring out ways to do all the work myself, especially using skills I never knew I had. I encourage all of you to try something you've never done before. If you don't know how to build benchwork, learn how. You can also learn how to hand lay track, or hook up all the wiring. Hand laying a turnout or building an 'N' scale steam locomotive from scratch might be a very difficult challenge, but I'm sure if you don't give up, success will be yours.

If you've never created scenery or scratch-built structures, jump in, and give it a try. It's the only way you will ever learn how and improve your skill level. Then you can attempt the task that scared me the most: the backdrop.



The Glacier Mountain At Center Is Not Cut From Foam.

It's A Solid Rock That Weighs 80 Pounds!

Tales of the Santa Cruz Northern

By: Jim Providenza

Lockdown Betterments

Sometimes (though not often, I will admit), I struggle writing Tales. I know the topic I want to discuss but writing about it doesn't come easily. Other times it is almost like a stream of consciousness. Sometimes it's photographs – when I wasn't thinking about the need to illustrate some point ahead of time.

But this time the story is simple. Plenty of things to say, too many in fact! And then our esteemed editor made it so easy! His usual 'heads up your stuff is due soon' email arrived as expected; acknowledging the tough times we are all dealing with and the almost total cessation of group activities that has occurred. He pleaded for photographs...

Photographs? Did you say... Photographs? Oh, do I have photographs!

Like many of us, I am sure, I have been suddenly discovered what to do with all those kits I have squirreled away, and the list of projects, and requests from friends! I hope you have too... and if you haven't, I suspect there is still time. Oh, and if you haven't stumbled across the term before, 'betterments' was railroad-eze for planned improvements.



Just another Central Vermont van... betterments! This is an old Roundhouse kit, one of several nicely factory lettered for the CV that needed a new cupola and along the way got renumbered... smoke jack moved, new ladders with handrails installed, tool box moved. Now ready for service and able to stand a comparison from some of the brass and resin kit vans that help make up the CV in NCA van fleet.

One of the great things about working on other layouts is the interesting projects you stumble into. These are three of 9 Fowler or Dominion boxcar shells with 5' foot doors that I got from Bill Sornsinn up in Seattle. He says the manufacturer, Canadian Model Trains / Proto 1000, has long been out of business. The shells have amazing die work with freestanding details and undercut Z bracing for the structural steel framing. Not completely lettered and no underframe, let alone trucks or couplers. So, I ordered 8 Fowler underframes from Accurail – also amazing die work if you haven't assembled one. A coat of ScaleCoat II paint and CN decals for the cars from Black Cat Publishing and then weathering with either an acrylic paint wash or Bragdon's Enterprises weathering powders.



Continued on page 25



LO's with stories... I have been slowly acquiring grain hoppers for a major industry change at WP Jct on the SCN. Some years ago Seth Neumann added substantially to the future fleet with a group of kits that he liked but realized he could not realistically run on his UP / Niles Canyon railroad. Another great project for the lockdown! The car in the rear is an old Lifelike Proto 2000 kit for a 4427 PS2CD. Another great kit with excellent detail. The car in front is an even older Bachmann model – from their toy train days. But it was in the group of cars from Seth because it is the only model available of a Santa Fe Ga-94 covered hopper. So I did what Seth had intended to do... all new grabs and ladder rungs, stirrup steps, cross over platforms, converted from talgo style coupler mounting to body mounted Kadec, etc.

Back to the CV in NCA... We needed to come up with models of the workhorse consolidations on the Palmer Sub. I had already modified one Bachmann 2-8-0 as No. 475. It has a big ol' Worthington feedwater heater hung on the fireman's side of the boiler which I just love. Linton von Beroldingen offered up a Bachmann 2-8-0 that he had as well... but what number should it be? Looking at photos it was clear that either the 467 or the 468 would be a good choice... Linton (the forensic chemist) settled on the 467 once he realized that was a prime number! That's an Elesco steam injector below the cab – the Bachmann steam dome has been lowered, several roof hatches removed, the headlight modified. When it was done the bell, whistle and air pump had been moved... several typical CV / CN style details such as angled number boards above the headlight added.



The Great Ongoing Occasional Project... started off with the thought that this would be a great time to undertake a really huge project. One that could be mind numbingly monotonous! Since the SCN is set in 1971 most of the freight car fleet should have ACI placards. That is about 500 decals to be applied. I decided that I could work on groups of 8-10 cars interspaced between other betterment projects or when glue had to set up or paint had to dry. Along the way I put out a call looking for folks whose era left them with ACI decals unused. Talking to Tony Thompson about this he commented – 'oh and you don't need to add any COTS markings.' Arghhh, Tony you are right – except that I have to remove the COTS markings from a bunch of cars... And since I'm at it, I might as well add reweigh dates and some more weathering. Talk about something growing by leaps and bounds!



Continued on page 26

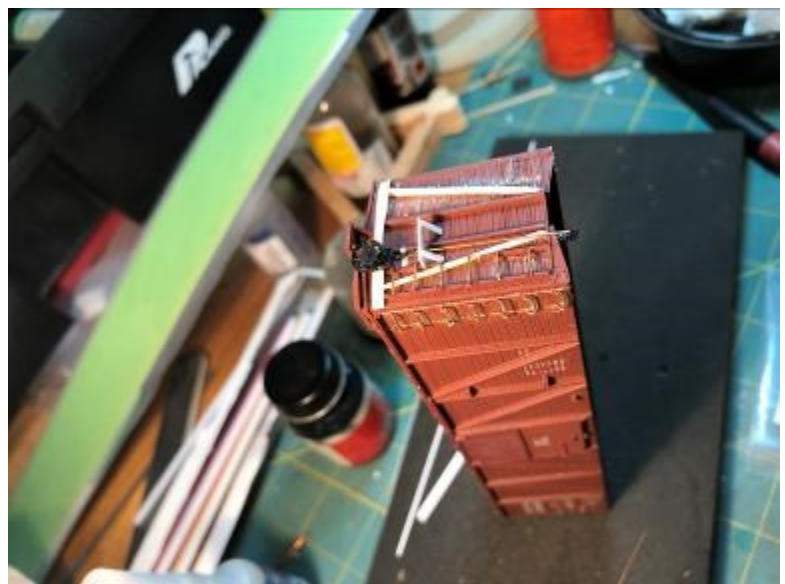
Tales of the SCN ct'd.

A work train project! The good news about Jordan spreaders is that they were used year-round. And I love work trains. So when we found that Walthers had made their Jordan Spreader in a GTW paint scheme and that the CV had the same model spreader, and we had photos, it was not too difficult to repaint the plow portion from red to black and re-letter the beast. Still slowly working on weathering to match a prototype photo, using Bragdon's weathering powders and some Citadel Miniature texture paints. Still a bit more to do here!



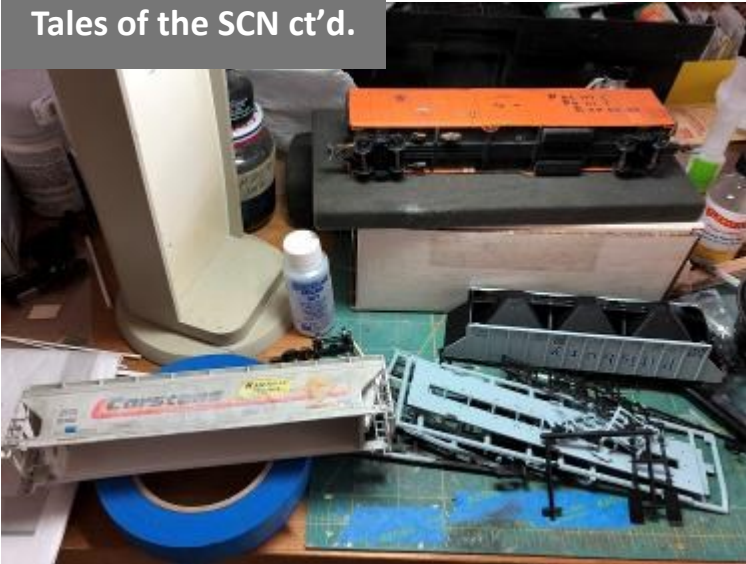
The Sandy River & Rangeley Lakes is not forgotten... a long-term project is nearing completion – wireless control battery power operations. Tam Valley Depot's wireless transmitter and receiver system that interfaces to my existing NCE DCC system. Here is a view of the electronics in the tender of No. 24. I added a new Soundtraxx Tsunami2 decoder as well. Operations outdoors this summer!

CV 40001 will get lost on the CV in NCA – it will be one of about 50 Accurail single sheathed CV boxcars. But it is different. The rest of the fleet was pretty much built as Accurail intended save for adding Kadee #5 couplers and Intermountain metal wheelsets, painting out the later era 'worms' logo and renumbering. I thought we should have one car that more closely represented its prototype. CV 40001 is that car. Grab irons, ladders and stirrup steps were either totally removed or modified and lots of new grab irons and ladder rungs added. The outside vertical steel structural members on the ends were removed and replaced with diagonal new ones built from strip styrene and capped with a steel crossmember. The bottom end sill was modified and a power brake wheel added.



Continued on page 27

Tales of the SCN ct'd.



Getting a little crowded around here... SPFE 453201 at the top is one of the 'occasional project' cars. It has had its COTS marks removed as well as a 'Perishable Fruit Experts' sticker that sat in place of the UP herald. Nice when I kitbashed the car 25 years or so ago, but not correct for the 1971 era of the SCN. The ACI label has been added and while I'm waiting for it to dry I've added a bit more weathering to CPIX 2008 (more on that one in a moment) and will then get back to assembling the next Proto 2000 4427 covered hopper. Multitasking with the best of them...

CPIX 2008 came to me courtesy of Bill Schaumburg, the retired editor of Railroad Model Craftsman and a good friend of many of us in the PCR. Bill was cleaning out some stuff and sent the custom decorated Accurail kit to me along with several other things. Celebrating RMC's 75th anniversary, the Carstens Publications car went immediately into the covered hopper project box. While I am not usually a fan of cars like this on the SCN, I felt Bill's continuing support of members of the PCR deserved to be recognized. Really heavy fading (the Dullcote / alcohol method) streaking and paint failure (Bragdon's Enterprises powders) and rust (Pentel Oil Pastels) added up to a car that hopefully will blend right in.



Patched – a heavily weathered NP covered hopper with patched data and reweigh dates to add to the fleet.

Continued on page 28



SFRD 4721 was on Bill Kaufman's State Belt, one of the first cars that 'got things going' back in the beginning. But the sliding plug door was clearly too new for it to be running around San Francisco in 1944. There were also other issues with this car of uncertain manufacture including the fact that the roof and ends were painted brown instead of black. But it was intriguing – a 40 foot Santa Fe ice reefer with a plug door. So I pulled out my copy of Refrigerator Cars – Ice Bunker Cars 1884 – 1979 by Keith Jordan, Richard Hendrickson, John Moore and Dean Hale. Come to find out that, if it wasn't modeled in its last rebuilt version, SFRD 4721 could have been on the State Belt! But the Santa Fe started rebuilding (and in some cases rebuilding a second time) their older cars with sliding doors and other betterments in 1953. Reviewing photos showed that the car would need a lot of work to meet an operating car standard. So what? One too many ribs on the ends? Carve off the bottom rib, the new space at the bottom is similar to how the prototype cars looked. Center sill not even close to deep enough (the USRA center sills were amazingly overbuilt but sturdy as all get out)? Deepen them to the prototype 2' with strip styrene. Need side sill supports under the widened doors? More styrene strip. New A Line stirrup steps (style A below the doors, style C at the four corners), a couple of cut levers, mask, paint, re-decal as needed. Lightly weather – the CV in NCA needs at least a couple of SFRD icers!

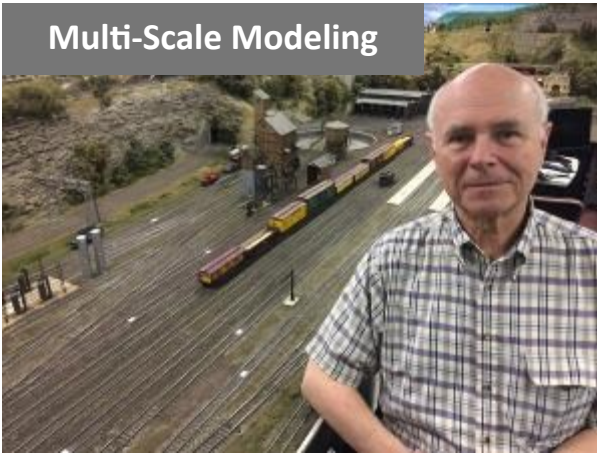
Notice something about all these photos and their stories? The connectedness? The joy in sharing? The range of tasks?

Fellowship and Fun.



MULTI-SCALE MODELING

By Ed Loizeaux



The rivet counters among us are a fine bunch of folks. Creating an exact scale model without exception is what turns them on. At the other end of the spectrum are folks like me, the “look & feel” type, who are satisfied with a realistic plausible effect without the effort of precise authentic replication. Without getting into the old argument over which is better, this column will present examples in which products from several different

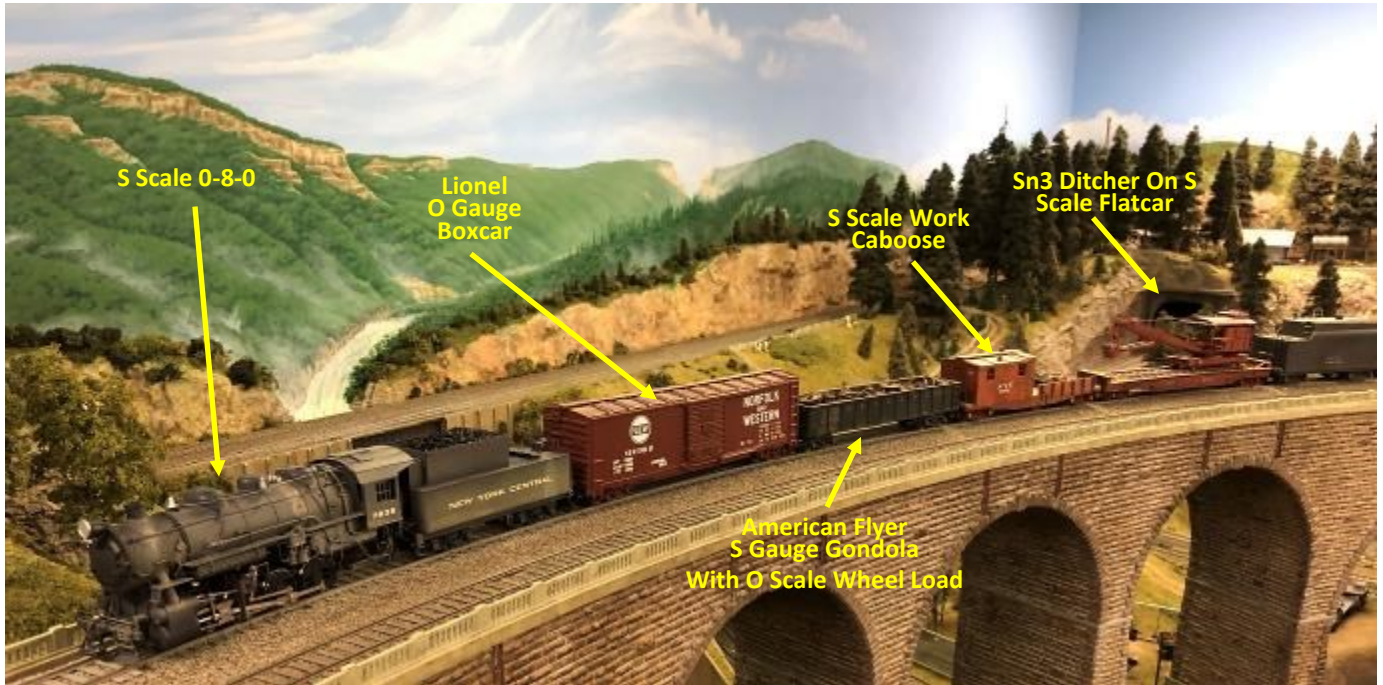
scales are used in the same scene. Many examples will come from my own layout, but photos and stories of your multi-scale modeling would be appreciated. Send them to: Loizeaux@SBCGlobal.net



The wreck train photo illustrates rolling stock originally labeled as S, Sn3, O, and O-27. The range of manufacturers includes Overland Models, Lionel, American Flyer and Marx. One S car has an O scale load which, if nothing else, makes it a bit unique. Nothing shown here will win a contest, but a scene is created which would otherwise be nearly impossible. While S scale may not be your thing (not all of us are that nutz), the general concept of looking around at other scales may add to the variety of scenes you can create. Give it a try and let me know how it goes.

Continued on page 30

Multi-Scale ct'd.



Looking Back

by Dave Connery, MMR, PCR Historian
Voices – An Interview with Charlie Getz

Charlie got his start in scale model railroading in 1961 when, at age 13, his parents got him an HO Tyco (Mantua) General train set for Christmas. His parents did it right. With the train set came a Lifelike grass mat, and some Bachmann vacuum-formed false front buildings; everything Charlie needed to build a model railroad. With this set came a year's subscription to a magazine named *Model Trains*. This monthly magazine was intended especially for people new to the hobby, but it went out of business just two months after Charlie's subscription started. The good news is that this magazine was owned by Kalmbach. When they ended publication of *Model Trains* in early 1962, they fulfilled the remainder of Charlie's subscription with copies of *Model Railroader*.



An interesting side to this was that at a younger age, in 1954 or 1955, Charlie had received a Lionel train, but it never "took". While he does not recall what happened to that train, it is clear Charlie appreciated scale model trains from an early age. Although it never ran particularly well, Charlie got hooked on the hobby with that Tyco General. Before this, Charlie had enjoyed building kits of cars, planes, and tanks. With model railroading he got interested in building structures.

Over the years Charlie has built several layouts. His first was a 5' X 9' "ping-pong" table layout using snap track. Work on this layout ended when his father, who was in the Air Force, was reassigned and the family moved to Los Altos Hills. His next layout was a 4' X 6' HO and HOn3 layout for which he saw plans in the January 1962 *Model Trains*. The plan was developed by Dwight Johns who, Charlie later learned, lived in the East Bay and was a member at the East Bay Model Engineers at their Emeryville location. While the layout only had a short section of HOn3 track, it introduced Charlie to narrow gauge modeling. He chose this plan because it was 4' X 6', which allowed Charlie to keep it in his bedroom in his parent's home. The HOn3 track was built using Kurtz-Kraft and he built a Binkley Cattle car. This layout got to the hard-shell stage when Charlie had to abandon the effort to attend college at UCLA. His first two years were too intense to do any modeling but in his junior year, Charlie built a 3' X 5' N-scale layout, the "Muy Poco", that fit under the bed in his apartment and was fairly complete. In 1969, while in law school, Charlie got into HOn3 and built a switching layout. On this layout, Charlie completed track-work and wiring but no scenery before graduation and a move back to the San Francisco Bay Area - and work. Charlie had a career serving as an attorney with the California Attorney General's office.

To this day, Charlie especially enjoys building structures. He feels there are some exceptional kits available today. Recently he has been having fun building some older craftsman rolling stock kits from Silver Streak, Central Valley, and others. Over the years he has built an enormous number of lovely structures. He looks forward to the day when he can use many of them on a future layout – but a quick look at the shelves of structures he has completed indicates no layout will be large enough to hold them all.

A good many of the kits he has built have appeared as reviews in the *Narrow Gauge and Short Line Gazette*. Bob Brown kids Charlie about all the kits he builds, but Charlie believes scratch-building, which he has done, is just building a kit of your own design. Once you have a plan and have collected the materials the kit builder and scratch-builder are essentially equal. In scratch-building you are building something of your own creation while when building a kit, you must implement someone else's inspiration which can take considerable creativity. Today Charlie never builds a kit exactly as it was intended but adds numerous details and changes the materials used so his buildings are uniquely his. In addition, he has become an expert in the art of adding very realistic weathering and aging to his finished models.

Continued on page 32

Charlie started writing a column for *the Narrow Gauge and Short Line Gazette* while still in his twenties. When he returned to the Bay Area after law school, Charlie visited Bob Brown to see his layout. At the time, Charlie was living with his parents and had a small workshop which Bob asked to see. Bob then asked Charlie if he would write an article on HO_{N3} modeling for the first issue of the *Gazette*. Two fellows had written a similar column for the predecessor, *Slim Gauge News*. Charlie wrote the article and Bob liked it well enough to have Charlie continue writing for the magazine. Due to some confusion with the deadline for issue two, Charlie did not have an article in that issue but has had a column in every issue since. Bob says he is the longest running columnist in the model railroad press – now at 45 years!

In 1964 Charlie first joined the NMRA. In those years, the organization produced an annual directory of all members, providing the opportunity to contact other modelers and arrange for visits either around home or when members were on the road. Charlie looked through this directory and noticed that John Allen was listed and was living in Monterey. Charlie had read some of John's articles in the model press and, as a 16-year-old, called John and asked if he could come for a visit. John was always open and said "sure". They set a date.

One Saturday Charlie's dad drove Charlie and a model railroader friend, Chris Zawojski, to Monterey where John welcomed them. Charlie remembers walking down a very dimly lit stairway into the basement, turning a corner, and there, brightly lit, was John's spectacular layout. This was the first true model railroad Charlie had ever seen in person. He was completely breathless. While his dad talked miscellaneous topics with John, Charlie and Chris had a chance to explore John's layout on their own. After an hour Charlie suggested they should be going (he had read that it was impolite to stay more than an hour as a guest visiting a layout.) From that point on Charlie compared this first layout with others he visited and, of course, the others never measured up to what Charlie thought was what a model railroad ought to look like. On the drive home Charlie's dad remarked about John, "I never met someone who talked so much about so many topics and knew nothing about any of them." Charlie had the temerity during the visit to say to John, "I see you used the Jack Work method of making pine trees". John was a bit set back and retorted, "I believe I taught Jack how to make those trees." John did have a healthy ego.

Charlie got involved in NMRA leadership rather opposite from most others' experience. Bob Dupont, a past NMRA President, asked Charlie if he would run for the then position of Western Vice-President. They wanted to get a second candidate for that position and probably thought it would be beneficial to have a lawyer on the board. Whit Towers also encouraged Charlie to run. Charlie knew Whit from his days in Southern California attending college. Charlie often visited Whit, who lived with his mother in a house in Bel Air, close to Sunset Blvd and the 405 freeway. Whit had taught Charlie a great deal about model railroading. Probably because he was well-known through his *Gazette* column, Charlie was elected. While working with the National Board, Charlie took on the responsibility of leading a Long-Range Planning Task Force that resulted in a complete restructuring of the NMRA management superstructure. Meanwhile Charlie got involved at the Region level becoming PCR President and Trustee. He served as our Trustee for many years. Charlie had a lot of help with developing the new regulations, and he specifically mentioned Ray deBlicek as one who helped greatly with this plan. This introduced the concept of single dues and greatly reduced the size of the National Board. These changes were needed and remain today. The cost of managing the organization has become critical as our hobby has decreased in number.

Charlie serves on the Howell Day NMRA Museum Committee. Working with Bob Brown, they have created the "Magic of Scale Model Railroading Exhibit" that should be open in the California State Railroad Museum by the time you read this interview. The idea is to capture a part of both the history and magic of model railroading and to do so in a way that will make the hobby attractive and interesting to potential modelers, especially those approaching or entering their retirement years. It is also hoped to be positive and entertaining to visitors of all ages. Based on what he sees, Charlie is convinced that today our target audience for new modelers and members is this group of middle-aged adults with both time and some expendable income available to them to really enjoy the hobby. The process to produce this exhibit has been enjoyable but very long. It is just now bearing fruit.

Continued on page 33

Looking Back ct'd.

As an aside, he and Bob Brown have also been deeply involved in the Narrow Gauge Preservation Foundation, a similar effort to promote and preserve narrow gauge prototype and modeling around the world. Charlie is included in their Narrow Gauge Hall of Fame.

Charlie sees this as the best time ever to be in this hobby. We have more great kits, new technologies permitting guaranteed results, and electronics that far outstrip the control, automation, and lighting systems of just a decade or so ago. It is true that the hobby is shrinking and aging in the United States, but it is growing and dynamic in other countries such as Japan, Europe, and Australia. In China, it is exploding amongst a gargantuan population.

Recently the California State Railroad Museum has approached the NMRA to see if we would be interested in participating in a railroad themed summer camp at the museum. This would be a chance for us to help show young people, interested in the subject, the safe ways to use tools and chemicals, how to plan and build a model railroad, and apply prototype operational procedures to a model railroad. The possibilities seem endless.

Charlie has had a deep and lasting impact on our hobby through his very enjoyable NG&SL Gazette column, his many review articles, his leadership of our Region and the National organizations, his contributions to the long range plan and resulting NMRA reorganization, and his determined effort to bring the scale model railroading exhibit to the California State Railroad Museum and its 600,000 annual visitors. Charlie has received the prestigious John Allen Award and is an Honorary Life Member of the NMRA. We all owe Charlie a heartfelt "Thank You" for all he has done for our hobby and our organization. For those of you who have not had the pleasure of visiting Charlie and his wonderful wife Margaret at their home in San Carlos, hidden away in a small room, Charlie has created the most complete model railroad hobby shop imaginable. Here you will find displays stacked from floor to ceiling with a small part of Charlie's model railroad stash of unbuilt kits. Here you will also find many of the models Charlie has completed, but his models fill shelves in several parts of the home. It is a setting most of us only dream of.



PCR President Appoints New Daylight Division Officers

by Chuck Harmon, Editor, Daylight Observation



At the on-line PCR membership meeting held on May 29, 2020 PCR President Chris Palermo announced the appointments of Ed Merrin of Santa Rosa to fill the position of PCR Director for Daylight Division and Mike O'Brien of Bakersfield as Daylight Division Superintendent.

As the first order of business for the new Daylight Officers, O'Brien called an on-line meeting of Daylight Division Committee members for 2 PM on June 11, 2020.

Commenting about his selection as Daylight Division Director, Ed Merrin wrote, "The entire PCR (and I suspect the NMRA as well) has been battling the demons of membership aging, shrinking numbers of members in general, and some burnout amongst the diminishing pool of members who have been rotating over and over through the various leadership and functional jobs that are necessary to make things happen. I can't begin to tell you how much time I had to spend as President finding people to fill PCR positions. And candidates to run for office? An uphill climb, which is why so many of our elections are limited to one candidate. For the last few years I have been running the on-line election system for PCR so I've seen this close-up, since I have to get information about candidates just to put together what you see on the screen when you go to vote.



**Ed Merrin,
Daylight Division Director**

"So for the last election we just couldn't get anyone nominated for Daylight Director. Not because there aren't a bunch of people in the Division that are qualified, but because we have asked too much of everyone and folks need a break. We tried focusing on a write-in option but very little came of that. So I suggested to Chris Palermo that I would be willing if he were to decide to appoint someone and he took me up on it. So here I am!

"Let's get upbeat about this. I consider the situation to be temporary and to actually provide us with opportunities to re-think what we're doing. Try new ideas out, grapple with challenges, and next thing you know things will be rolling again.

"My job will be to represent you all at the Board of Directors level. Any input from the membership will be helpful for me to do that adequately. Hopefully, more than adequately. I have some thoughts about what some of the challenges might be, but I'm going to keep my mouth shut for a bit because I may be totally out of whack on that. But I may test some of these ideas out informally and see what people think.

"In the meantime, I think good things are coming. Our new Superintendent, Mike O'Brien is already on the case, organizing meetings and starting the communication process. Let's all give him 110% support and we'll get this done."



**Mike O'Brien,
Daylight Division Superintendent**

The new superintendent Mike O'Brien offered this comment: "I look at this position as an honor. I hope to be able to reach out and promote the Hobby as much as possible. With the covid issue and everyone being relegated to staying at home until things lighten up, I think we can get the division back up and going again. I'm looking at doing the quarterly meetings thru the use of the new technology. The PCR has held a few meetings on ZOOM which actually was pretty easy. A few of the other divisions have started utilizing the internet to interact with their members. Maybe this is the new way to have meetings. We're going to give it a shot and see how it works out. So in the next few months look for updates for this new way to have a meeting. I would like some suggestions from members on how they would like to continue forward.

"It seems the hectic year we've had so far is calming down and we can get back to a more normal way of going about our regular routines. With that being said, I would like to present a challenge to everyone to continue to stay involved, maybe step up to volunteer for some of the positions that still need to be filled, come up with a new clinic or presentation to show and share your expertise. Diversity in membership makes for a strong organization."



Coast Division Report

By Lisa Gorrell



Our last meet was held in March at the Elks Lodge with 97 people attending. Frank Markovich gave a presentation on the model railroad that he and Mike Blumensaadt built for the NMRA "Magic of Model Railroading" exhibit at the California State Railroad Museum in Sacramento. It was very interesting seeing the development of the layout. The auction had 321 items.

I was really looking forward to the PCR convention in Concord this year. The trip to the Western Railway Museum looked like lots of fun and I was on the schedule to give a presentation on genealogy. We had the Board of Directors meeting on Zoom instead and it was the quickest meeting I've ever attended.

The Annual Meeting was held May 29 and the yearly awards were announced during the meeting. For Coast Division Member of the Year, I presented the award to Ronnie LaTorres. This is what I said:

Ronnie LaTorres has been volunteering as the Coast Division Registrar at every Coast Division Meet since March 2014. She has never missed a meeting and is always there early to help set up. Besides setting up and getting everyone registered, she collects orders for name badges. She is responsible for gathering door prizes and distributing them a break during the auction. Often, she has baked goods to share with members she greets. She has also volunteered many times at the GTE shows working at the NMRA booth for recruitment. Thank you, Ronnie. Congratulations on being 2020 Coast Division Member of the Year.

Hopefully we'll be able to present the award to her in person soon. Congratulations.

There could be no meet in June. I wish to thank Phil Edholm for creating weekly Zoom meetings for members to get together and share about model railroading. These Zoom meetings are open to any PCR member or future member. Check the Groups.io for the link.



Redwood Empire Division Report

By Scott Lockhart



It was early March and we were just starting to think about the upcoming Spring Redwood Empire Division meeting. We were looking forward to the Clear to the Coast PCR Convention in Concord, the Gateway 2020 NRMA National Convention in St. Louis, and numerous local model railroading events. And did anyone know what a Zoom was? Looking at the current PCR Master Calendar confirms that we are in another reality. The Redwood Empire Division canceled the Spring meeting and we are not sure if the Summer picnic will take place. As so many other model railroad organizations have done, we are investigating Zoom as a way for RED members to stay in touch with one another. Al Merkrebs, in charge of RED programs, has taken responsibility for getting Zoom up and running. He is looking at doing a division-wide Zoom Show & Tell presentation in July.

Stay tuned for additional information. *(Editor's Note: The first RED Zoom Show & Tell was held June 13)*

Speaking of Al Merkrebs, we are very pleased to announce that Al is the 2020 Redwood Empire Division Member of the Year. Al has done a great job putting together programs for the RED meetings including a great presentation by the Redwood Empire Garden Railroad Society that included a visit to Doug Lodges' backyard layout. Gus Campagna, with Al's help, gave a presentation on how to install a Tsunami Plug & Play DCC decoder, with sound, into a Proto 2000 SD9 model from Gus's California Western layout. We are looking forward to his upcoming Zoom program next month.

The Redwood Empire Division now has a Facebook page. It is a private page for all NMRA members which allows members to share what they are working on. I encourage you to take a look at the page and feel free to add anything you are currently building, modifying, adding, deleting, and, researching. You can view the Facebook page at Redwood Empire Division - PCR/NMRA

The Redwood Empire Division will be hosting the annual PCR Convention in 2022. We are just starting the preliminary planning steps with high hopes that the quarantine will be a thing of the past and we will back to some kind of normal. More information will be available later this summer.

I hope one of the silver linings of the quarantine is extra time you have to tackle those model railroading projects that have been sitting on the workbench or in the closet waiting for attention. I know modelers who are making great progress on their layouts with new buildings or landscaping. Other modelers are updating or modifying locomotives and rolling stock. I have been improving my soldering skills by working on and updating a few locomotives to DCC with sound and better lighting. And, I am looking forward to a haircut sometime in the future.

I hope everyone is well, safe, and doing their best during these trying times. Having a great hobby can be such wonderful comfort and diversion to us all while dealing with so much uncertainty. We will stay in touch. And, likewise, if you have any suggestions or comments please feel free to forward them to me and I will share them with the staff of the RED.

Happy modeling!

Scott Lockhart

Superintendent, Redwood Empire Division





Sierra Division Report by Chip Meriam

As with the other divisions in the PCR, the Sierra Division's Spring meet was cancelled due to the imposition of mitigation measures stemming from COVID-19. The meet, scheduled for May 9, was to have included a visit to the Northern California Museum of Transportation in Oroville. One of the exhibits, to which we were looking forward, was the GE 45 tonner we previously discovered during our visit to James Railcar in October 2016. James Railcar has since closed. Fortunately, the little engine was "rescued" by the museum.



GE 45 Tonner Being Prepared For Movement To The Northern California Museum Of Transportation

We remain uncertain about planning for future meets, but we're hopeful that we can plan our visit to Oroville for October of this year.

We have also observed the success of virtual "meet-ups", via Zoom, that have taken place in the Coast Division and the Redwood Empire Division. We would like to follow suit and, as such, we're looking for a "Zoom Administrator" within our division.

On May 29, a virtual PCR Business Meeting was held via, you guessed it, Zoom. This was the annual meeting of the PCR members that was originally scheduled to take place during the PCR Convention in Concord. As we know, that convention was cancelled. During the virtual meeting, two of our Sierra Division members were honored. Past Superintendent and current Membership Manager, Jim Collins, was selected as the Sierra Division Member Of The Year. Current Superintendent, Chip Meriam, received the NMRA President's Award for Service to the Division. *(other PCR honorees can be seen in the article that begins on page 1)*

Meanwhile we encourage everyone to stay active and enjoy the hobby that we all find so fascinating. Remember, better times are ahead....



**Jim Collins
Sierra Division Member Of The Year**



**Chip Meriam
NMRA President's Award For Service To The Division**



June 13, 2020, 3:00 AM to 2:00 PM PDT • NMRA-X Virtual Convention, via Facebook Live. Organized by British Region with participation from around NMRA. For details, join the NMRA Facebook Group at <https://www.facebook.com/groups/nmragroup/>.

For those who don't do Facebook, NMRA is actively investigating other platforms that provide sufficient bandwidth, member participation, and acceptable cost. Comments on the platform should be directed to NMRA's national marketing team and not PCR.

June 27, 2020, 3:00 AM to 2:00 PM PDT • NMRA-X Virtual Convention, via Facebook Live. Organized by British Region with participation from around NMRA. For details, join the NMRA Facebook Group at <https://www.facebook.com/groups/nmragroup/>.

For more details on these events go to the Calendar at the PCR web site.

For a list of monthly activities see page 41

For those who don't do Facebook, NMRA is actively investigating other platforms that provide sufficient bandwidth, member participation, and acceptable cost. Comments on the platform should be directed to NMRA's national marketing team and not PCR.

August 8, 2020 - Carquinez Model Railroad Society. Please visit our HO scale three level 36'x60' model railroad depicting the Southern Pacific/Union Pacific railroad as it traverses California from Oakland, California to Sparks, NV through the picturesque East Bay before climbing through the dramatic scenery of the Sierra Nevada mountains, to Sparks, NV. We are open from 10 AM to 4 PM and are located at 645 Loring Ave. in Crockett, CA. Admission is \$5 with children under 16 free when accompanied by an adult. Visit us on-line at www.cmrstrainclub.org. Info: davetateosian@sbcglobal.net

August 28, 2020 - 8:00 pm to 10:00 pm, Monthly Model Train Show, Walnut Creek Model Railroad Society, in Larkey Park, 2751 Buena Vista Ave, Walnut Creek, CA.

The Walnut Creek Model Railroad Society (WCMRS) operates the Diablo Valley Lines (DVL) model railroad, one of the most mountainous and one of the largest exclusively HO scale model railroads in the United States. This model railroad features standard gauge, narrow gauge, and interurban (overhead electric) freight and trolley lines.

Fares

\$3.00 Adults

\$2.00 Seniors & Children (6-12 yrs) - Children under 6: FREE

September 13, 2020 - 9:00 am to 5:00 pm, Coast Division Meet. See their website for location.

Come meet other local model railroaders during our free quarterly meet and enjoy free clinics, model, photo & switching contests/displays, videos, etc! Bring YOUR questions to modeler's roundtable for answers. You may win a door prize! Enjoy our lively auction of model railroading items & more!

September 19 – 20, 2020 - 11:00 am to 6:00 pm, Weekend Model Train Show, Walnut Creek Model Railroad Society, in Larkey Park, 2751 Buena Vista Ave, Walnut Creek, CA. Phone: (925) 937-1888 The Walnut Creek Model Railroad Society (WCMRS) operates the Diablo Valley Lines (DVL) model railroad, one of the most mountainous and one of the largest exclusively HO scale model railroads in the United States. This model railroad features standard gauge, narrow gauge, and interurban (overhead electric) freight and trolley lines. The Walnut Creek Model Railroad Society (WCMRS) operates the

Diablo Valley Lines (DVL) model railroad, one of the most mountainous and one of the largest exclusively HO scale model railroads in the United States. This model railroad features standard gauge, narrow gauge, and interurban (overhead electric) freight and trolley lines.

Fares:

\$3.00 Adults, \$2.00 Seniors & Children (6-12 yrs)

• Children under 6: FREE

September 25, 2020 - 8:00 pm to 10:00 pm, Monthly Model Train Show, Walnut Creek Model Railroad Society, in Larkey Park, 2751 Buena Vista Ave, Walnut Creek, CA. • MAP

The Walnut Creek Model Railroad Society (WCMRS) operates the Diablo Valley Lines (DVL) model railroad, one of the most mountainous and one of the largest exclusively HO scale model railroads in the United States. This model railroad features standard gauge, narrow gauge, and interurban (overhead electric) freight and trolley lines.

October 2 – 4, 2020 - Central Coast Railroad Festival, San Luis Obispo and Northern Santa Barbara Counties, CA., Hosted by San Luis Obispo Railroad Museum, 1940 Santa Barbara Avenue, San Luis Obispo, CA

Festival Schedule (NOTE: Not all venues are open all days and times. Please read the schedule carefully for days/times that each venue is open.) Major Sponsors: San Luis Obispo Railroad Museum, Santa Maria Valley Railroad, KSBY Channel 6, Union Pacific Railroad, City of San Luis Obispo

Amazing Model Train Layouts. Last year's tour included over 30 different layouts at various locations from Lompoc on the south to Atascadero on the north, covering many scales and eras at both private and public sites. Numerous Events and Exhibits at County Libraries and the San Luis Obispo Railroad Museum.

October 17 - 18, 2020 - Carquinez Model Railroad Society. Please visit our HO scale three level 36'x60' model railroad depicting the Southern Pacific/Union Pacific railroad as it traverses California from Oakland, California to Sparks, NV through the picturesque East Bay before climbing through the dramatic scenery of the Sierra Nevada mountains, to Sparks, NV. We are open from 10 AM to 4 PM and are located at 645 Loring Ave. in Crockett, CA. Admission is \$5 with children under 16 free when accompanied by an adult. Visit us on-line at www.cmrstrainclub.org. Info: davetateosian@sbcglobal.net

October 17 & 18, 2020 - 10:00 am to 4:00 pm, Fall Train Show 2020 and Swap Meet, Black Diamond Lines Model Railroad Club, 425 Fulton Shipyard Rd, Antioch, CA. MAP We have transitioned to a fully DCC system to run our layout. Come check us out and see the new way we are operating model trains.

Fares: - Adults: \$3.00 - Seniors (60+): \$2.00 - Children (6-12): \$2.00 - Children under 6: Free

Info: info@blackdiamondlines.com, Phone: (925) 779-1964

October 30, 2020 - 8:00 pm to 10:00 pm, Monthly Model Train Show, Walnut Creek Model Railroad Society, in Larkey Park, 2751 Buena Vista Ave, Walnut Creek, CA.

The Walnut Creek Model Railroad Society (WCMRS) operates the Diablo Valley Lines (DVL) model railroad, one of the most mountainous and one of the largest exclusively HO scale model railroads in the United States. This model railroad features standard gauge, narrow gauge, and interurban (overhead electric) freight and trolley lines.

Fares: \$3.00 Adults, \$2.00 Seniors & Children (6-12 yrs)

Children under 6: FREE

Continued on page 39

Calendar

November 20 – 22, 2020 - Friday: 8:00 pm to 10:00 pm, Saturday & Sunday: 11:00 am to 6:00 pm, Holiday Show, Walnut Creek Model Railroad Society, in Larkey Park, 2751 Buena Vista Ave, Walnut Creek, CA. Phone: (925) 937-1888

The Walnut Creek Model Railroad Society (WCMRS) operates the Diablo Valley Lines (DVL) model railroad, one of the most mountainous and one of the largest exclusively HO scale model railroads in the United States. This model railroad features standard gauge, narrow gauge, and interurban (overhead electric) freight and trolley lines.

The Walnut Creek Model Railroad Society (WCMRS) operates the Diablo Valley Lines (DVL) model railroad, one of the most mountainous and one of the largest exclusively HO scale model railroads in the United States. This model railroad features standard gauge, narrow gauge, and interurban (overhead electric) freight and trolley lines.

For more details on these events go to the Calendar at the PCR web site.

For a list of monthly activities see page 41

Fares: \$3.00 Adults, \$2.00 Seniors & Children (6-12 yrs) • Children under 6: FREE

November 27 – 29, 2020 - Friday: 2:00 pm to 10:00 pm, Saturday & Sunday: 11:00 am to 6:00 pm, Holiday Show, Walnut Creek Model Railroad Society, in Larkey Park, 2751 Buena Vista Ave, Walnut Creek, CA. • MAP • Phone: (925) 937-1888 The Walnut Creek

Model Railroad Society (WCMRS) operates the Diablo Valley Lines (DVL) model railroad, one of the most mountainous and one of the largest exclusively HO scale model railroads in the United States. This model railroad features standard gauge, narrow gauge, and interurban (overhead electric) freight and trolley lines. Fares:

- \$3.00 Adults
- \$2.00 Seniors & Children (6-12 yrs)
- Children under 6: FREE

December 6, 2020 - 9:00 am to 5:00 pm, Coast Division Meet. See their website for location. Come meet other local model railroaders during our free quarterly meet and enjoy free clinics, model, photo & switching contests/displays, videos, etc! Bring YOUR questions to modeler's roundtable for answers. You may win a door prize! Enjoy our lively auction of model railroading items & more!

December 12– 13, 2020 - Carquinez Model Railroad Society. Please visit our HO scale three level 36'x60' model railroad depicting the Southern Pacific/Union Pacific railroad as it traverses California from Oakland, California to Sparks, NV through the picturesque East Bay before climbing through the dramatic scenery of the Sierra Nevada mountains, to Sparks, NV. We are open from 10 AM to 4 PM and are located at 645 Loring Ave. in Crockett, CA. Admission is \$5 with children under 16 free when accompanied by an adult. Visit us on-line at www.cmrstrainclub.org. Info: davetateosian@sbcglobal.net

December 27, 2020 - 8:00 pm to 10:00 pm, Monthly Model Train Show, Walnut Creek Model Railroad Society, in Larkey Park, 2751 Buena Vista Ave, Walnut Creek, CA
The Walnut Creek Model Railroad Society (WCMRS) operates the Diablo Valley Lines (DVL) model railroad, one of the most mountainous and one of the largest exclusively HO scale model railroads in the United States. This model railroad features standard gauge, narrow gauge, and interurban (overhead electric) freight and trolley lines.

Fares: \$3.00 Adults, \$2.00 Seniors & Children (6-12 yrs) • Children under 6: FREE

January 16 – 17, 2021—March 20 – 21, 2021 - 11:00 am to 6:00 pm, Weekend Model Train Show, Walnut Creek Model Railroad Society, in Larkey Park, 2751 Buena Vista Ave, Walnut Creek, CA. Phone: (925) 937-1888

The Walnut Creek Model Railroad Society (WCMRS) operates the Diablo Valley Lines (DVL) model railroad, one of the most mountainous and one of the largest exclusively HO scale model railroads in the United States. This model railroad features standard gauge, narrow gauge, and interurban (overhead electric) freight and trolley lines.

The Walnut Creek Model Railroad Society (WCMRS) operates the Diablo Valley Lines (DVL) model railroad, one of the most mountainous and one of the largest exclusively HO scale model railroads in the United States. This model railroad features standard gauge, narrow gauge, and interurban (overhead electric) freight and trolley lines. Fares: \$3.00 Adults, \$2.00 Seniors & Children (6-12 yrs) • Children under 6: FREE

January 29, 2021, Feb 6, 2021, March 26, 2021 - 8:00 pm to 10:00 pm, Monthly Model Train Show, Walnut Creek Model Railroad Society, in Larkey Park, 2751 Buena Vista Ave, Walnut Creek, CA.

The Walnut Creek Model Railroad Society (WCMRS) operates the Diablo Valley Lines (DVL) model railroad, one of the most mountainous and one of the largest exclusively HO scale model railroads in the United States. This model railroad features standard gauge, narrow gauge, and interurban (overhead electric) freight and trolley lines. Fares: \$3.00 Adults, \$2.00 Seniors & Children (6-12 yrs) • Children under 6: FREE

January 29, 30, & 31, 2021 – Bay Area Layout Design & Operations Weekend, Sponsored by Pacific Coast Region-NMRA and Layout Design SIG. The meet and all three days of layout tours are open to ALL, regardless of affiliation or membership. NMRA, PCR, LDSIG, or any other SIG membership is NOT required! If you can't join us for the entire meet, at least come out and enjoy some truly wonderful layouts. TSG video report of Live Crew Lounge Panel Discussion at 2020's meet (Starts at 0:49) Save the dates!

April 3, 2021 - 16th Annual Pacific Model Loggers' Congress, Camp 18 Restaurant and Museum, U.S. Highway 26, Elsie, Oregon • We're still working on our schedule of a full day with special speakers, clinics, a model contest and dealer sales area. We are actively soliciting clinic presenters for the event, and we can use modeling or historic prototype clinics that pertain specifically to logging. See the website for complete details. For general information, phone Lon Wall (971) 265-1060, or Jeff Johnston (541) 914-1152. E-mail us with questions or for more info. Admission: \$15.00 per person at the door. There is no pre-registration.

April 22 – 24, 2021 - Sugar Pine Centennial 2021, PCR/NMRA Convention, Hosted by Daylight Division, Wyndham Garden Fresno Yosemite Airport, 5090 East Clinton Way, Fresno, CA • MAP

Continued on page 40

Calendar

Time Table

July 12 – 18, 2021 - Rails By The Bay 2021 NMRA National Convention, Santa Clara Marriott Hotel, 2700 Mission College Boulevard (at Great America Parkway), Santa Clara, CA • MAP

September 8 – 11, 2021 - Orange Blossom Special 2021, NMRA Pacific Southwest Region 2021 Convention, Hosted by Cajon Division, Hilton Hotel / Orange County Airport, 18800 MacArthur Blvd, Irvine, CA • MAP



July 4 - 10, 2021 - Rails By The Bay, Santa Clara, CA

For more details on these events go to the Calendar at the PCR web site.

For a list of monthly activities see page 41

PCR Membership Gauge

May 31, 2019—939

June 30, 2019—940

July 31, 2019—942

August 31, 2019—934

September 30, 2019—934

October 31, 2019—935

November 30, 2019—921

December 31, 2019—921

January 31, 2020—918

February 29, 2020—899

March 31, 2020—879

April 30, 2020—881

May 31, 2020—868

In Memoriam

Member	City, State	Date Joined
Daylight		
Layton Gillette	Coarsegold CA	9/1/2008
Coast		
Edwin Ness	San Francisco CA	11/1/1996
Redwood Empire		
Gerald Bowers	Boonville CA	1/1/1997 (Lifetime Member)

Monthly Activities

First and Third Thursday - 7:00 PM / Siskiyou Model RR Club / Yreka Western Depot, 300 East Miner St., Yreka, CA (Exit 775 from I-5). Info: Tom Brass, (530) 842-4921, Glenn Joesten (530) 340-2537

First Friday 7:30 PM / San Leandro Historical Railway Society (HO, O, G), Monthly meeting / 1302 Orchard Ave, San Leandro, CA / Club phone 510-569-2490 / Info: info@slhrs.org.

First Saturday 11:00 am to 12:00 PM / Golden State Model Railroad Museum / East Bay Model Engineers Society (O, HO, N, Narrow Gauge, Traction) / Point Richmond, CA / Club Phone 510-234-4884 or info@gsmrm.org. Free coffee and doughnuts.

First Saturday 12:30 PM / European Train Enthusiasts (ETE) Sacramento Chapter (HO, HOm, N) 3600 J Street, Sacramento, CA. (entrance from 36th Street near East Sacramento YMCA). Social and H0 layout running 12:30 to 2:00 PM, then program/show and tell, followed by 2:30 PM business meeting. / Contact: Dusan Petras (650) 300-9504 or Helmuth Nixdorf (916) 481-0991, e-mail: dusanpetras@aol.com / See the website for additional information: www.ete.org.

Second Tuesday 7:30 PM / Empire Builders Model Railroad Club (HO) 3318 School St, Oakland, CA / e-mail: president@ebmrc.org

Second Wednesday 7:30 PM / Golden Empire Historical and Modeling Society (HO&N) Bakersfield, CA / Doug Wagner, e-mail: carldw@aol.com or 661-589-0391 / Club phone: 661-325-5820

Second Saturday 10:00 AM / Tehachapi Loop RR Club / Tehachapi, CA / Tom O'Brien, e-mail: threerail@earthlink.net 661-822-1546

Second (and Fourth) Saturday 10:00 AM to 3:00 PM (and every Wednesday 10:00 AM to 12:00 PM) • Admission: Free / Bay Area N-Trak Model Railroad Club (N)

Wells Fargo Express Room, Southern Pacific Railroad Depot, 900 Loring Ave., Crockett, CA • Map / Donations are welcome. / Contact: Jim Gray, send text to 925-260-5804 or e-mail to graymarks@hotmail.com

Second Saturday 1PM-4PM / West Bay Model Railroad Association, Open House, We run trains run for our visitors, 1090 Merrill Street, Menlo Park, CA / e-mail westbaylines.com

Second Saturday 1:00 to 5:00 PM / European Train Enthusiasts (ETE) San Francisco Bay Area Chapter (HO) Location varies / Contact: Brian Hitchcock, brianhitchcockdba@gmail.com / See the website for additional information: www.ete.org.

Second Saturday 1:30 PM / Carquinez Toy Train Operating Museum Business Meeting, 645 Loring Ave (Across from C&H Sugar), Crockett, CA. MAP

Second Saturday 3:00 - 6:00 PM / California Central Club (HO & HOn3) / Old Agnew Station, 4185 Bassett St, Santa Clara, CA / Subject to change, contacting us in advance of your visit is

highly recommended at: ccmrc1961@gmail.com

Second & Fourth Weekends / Swanton Pacific Railroad Society (19")

Santa Cruz County, CA / Ed Carnegie, e-mail: ecarnegi@calpoly.edu or 805-756-2378

Mid-Month Weekends / Bitter Creek Western RR (Live Steam) Arroyo Grande, CA / Dan Andrews, e-mail: danandrews@charter.net or 805-481-0419

Third Monday 7:00 PM / San Luis Obispo Model Railroad Association (all) Oceano Depot, CA / Dennis Pearson, e-mail: info@sломra.org or 805-929-3062

Third Tuesday 7:00 PM / Visalia Electric Model Railroad & Historical Society / Meets at Ryan's Place Restaurant, 3103 South Mooney Blvd, Visalia, CA / Cecil Eppler, e-mail: cecil_eppler@sbcglobal.net

Third Wednesday 8:00 PM / West Bay Model Railroad Association, Monthly Business Meeting, 1090 Merrill Street, Menlo Park, CA / e-mail westbaylines@gmail.com

Third and First Thursday - 7:00 PM / Siskiyou Model RR Club / Yreka Western Depot, 300 East Miner St., Yreka, CA (Exit 775 from I-5). Info: Tom Brass, (530) 842-4921, Glenn Joesten (530) 340-2537

Third Friday 7:00 - 11:00 PM / Black Diamond Lines Model Railroad Club Operating session (HO) / Antioch, CA / Info: info@blackdiamondlines.com / Club phone 925-779-1964

Third Saturday 9:00 AM - 12:00 PM Noon / San Joaquin Central Operating Session (HO) / Fresno, CA / Chuck Harmon, e-mail: harmonsta@aol.com or 559-299-4385. It's April 1949 on SP's Donner Pass and fictitious SJC. An advance courtesy contact is appreciated. Send e-mail to be added to mailing list.

Third Saturday / Sacramento Modular Railroaders Operating Session (HO) / Sacramento, CA / Scott McAllister, e-mail: scooter923@att.net

Fourth Wednesday 7:00 PM / Coast Toy Train Club / Wood Glen Hall, 3010 Foothill Rd (at Alamar), Santa Barbara, CA / Lots of collecting in S, O, and Standard gauges. / Contact: Ken Kelley, e-mail: kenattr@thirdrail.com

Fourth (and Second) Saturday 10:00 AM to 3:00 PM (and every Wednesday 10:00 AM to 12:00 PM) • Admission: Free / Bay Area N-Trak Model Railroad Club (N) Wells Fargo Express Room, Southern Pacific Railroad Depot, 900 Loring Ave., Crockett, CA • Map / Donations are welcome. / Contact: Jim Gray, send text to 925-260-5804 or e-mail to graymarks@hotmail.com



Enjoy the fellowship and learning experiences of a club near you

Alameda County Central Railroad Society

ACCRS is an HO and O scale club with layouts in a 30x100 building on the Alameda Co. fairgrounds in Pleasanton. With over 60,000 annual visitors, ACCRS is a great showcase for the hobby. Layouts reflect Alameda County and California and are continually improving and updating. Open for Fair events and Fridays, 6-9 PM. Lowest dues in the area.

Contact: Gary Lewis 925-455-8135

Email: glslewis@comcast.net

Web: www.pleasantonmodelrr.org/index.html

Amador County Model Railroad Museum

The ACMRRM is located at #1 Main Street, Jackson, California adjacent to the historic National Hotel. Our non-profit association is open to the public from 10 AM to 5 PM, Friday through Sunday during Winter months and Wednesday through Sunday during the Summer. Work sessions are held every Tuesday starting at 10 AM. Our scenic DCC HO-scale layout depicts the lumber and gold mining history of Amador County. Operations include the Amador Central short line as well as the railroads of California's Central Valley including terminals at Stockton and Sacramento.

Contact: Robert Piety, 209-296-3587 email rdpiety@sbcglobal.net

Antioch Model Railroad Club

The Black Diamond Lines is an HO Club located at 425 Fulton Shipyard Rd, Antioch. BDL has been in continuous operation since 1981. We meet Tues. & Fri., 7:00pm to 10:00pm. Formal Operating Session on the 3rd Friday of the Month, but visitors can always find trains running every club night. For more information, e-mail info@blackdiamondlines.com or visit us on the web at www.blackdiamondlines.com and we can be found on Facebook and YouTube.

Bay Area Ntrak Model Railroad Club

BANTrak MRC invites N scale modelers to visit us at the Wells Fargo Express Room, Southern Pacific Railroad depot, 902 Loring Ave., Crockett, on Wed. and Sat., 10 AM to 3 PM. Contact: Bob Lewis, 925-283-6838
E-mail: BobLewis1@sbcglobal.net.

Bay Area S Scalers

BASS is a group of modeler railroaders in the San Francisco Bay Area focused on scale modeling in 1:64 scale. BASS is a round robin club, typically meeting in a member's home on the third Saturday of odd numbered months. Meetings may include a mini-clinic, or showing progress on models or a layout. We also have a modular layout that has been displayed at public events. Contact: Michael Eldridge (meldridge2000@gmail.com).
Web: www.bayareasscalers.org.

California Central Model RR Club

The CCMRC is located in the old Agnew depot (Santa Clara) of the Southern Pacific (4185 Bassett St.) directly across from the Lafayette St. gate of Agnew State Hospital. The theme of the 15' x 50' HO club is western railroading running from the Bay Area to Southern Oregon. We meet Fri., 7:30 to 11 PM. Operating sessions the 1st and last Fri. of the month. Contact: 408-988-4449 (operating nights), or Wayne Cohen, 408-779-0707.

Carquinez Model Railroad Society

HO Model Railroading on a Grand Scale! Can you imagine taking one real time hour to run an SP (or your favorite name) DCC train round trip from Oakland, through the Sierras to Sparks and back? Don't imagine, join us! Friday nights 7-10 (by appointment) at 645 Loring Dr, 2nd Floor, Crockett CA Call Weds 7-10 510-787-6703 or e mail anytime loggingrr@aol.com, bob@bob2sell.com or lambert5522@att.net

Coastal Valley Lines Model Railroad Club of Sonoma County, LTD

Coastal Valley Lines Model Railroad Club of Sonoma County, LTD (Coastal Valley Lines) is an association of novice-to-expert model railroaders from the Sonoma County area, who operate a digitally command controlled (DCC) HO scale modular railroad at public and private events, and gather for clinics, work sessions and monthly meetings. Coastal Valley Lines is incorporated in the State of California with its primary purpose of educating the public about model railroading as a family hobby and is a not-for-profit 501(c) 3 organization with elected officers and bylaws. Additional information can be found at cvlrr.com.

83714.

Continued on page 43

Eel River Valley Model Railroaders

The Eel River Valley is an HO club with a NWP-layout series of modules under construction. We meet Fri., 7:30 PM at the Humboldt County Fair Grounds Commercial Building, NW corner, Ferndale. Contact: Jack Jensen, 707-845-2823, 3313 Union St., Eureka, CA 95503 or Ron Plies, 208-229-7107, 12818 N. 11th Ave., Boise, ID 83714.

Elsie

The Left Coast (Elsie) HOn30 group invites anyone interested to join us. We use existing standards for module construction but are not merely a modular group. Contact: Al Sandrini in Bakersfield, 661-664-8614 or Ken Lunders in Cupertino, 408-777-9572.

Empire Builders Model Railroad Club

Starting over after a warehouse fire destroyed our layout, we are a small friendly group now constructing an HO layout of no specific origin based in the early 50's era. The mountain division is laid and operating, we also have a reasonable size yard operationally working well. Work days are Saturday and during summer on Wednesdays. Our retired members also show up on occasional weekdays. The club site is located at 3318 School St Oakland, Ca Call Charles at 510-917-5790 or Ted at 510-749-7099 for an invite to see/chat/join. Please visit our website <http://www.ebmrc.org>.

European Train Enthusiasts

ETE (www.ete.org) serves modelers, railway fans, related organizations, and the community through public venues, operating layouts, the annual convention EuroWest, the chapter newsletter, and the quarterly national journal, the *ETE Express*. ETE is open to all who have an interest in European railways, whether full size or scale model. The SF Bay Area Chapter meets the second Saturday of the month from 1-5pm in various locations around the bay. Contact BillKeaney (650) 355-7231 or billkeaney@comcast.net.

Golden Empire Historical & Modeling Society

Bakersfield GEHAMS, founded in 1987 and in their current location since March '94, is dual-scale with a 30' x 100' HO, and a 18' x 80' N based on SP's route from Bakersfield to Mojave with Tehachapi Loop. Though under construction, mainlines are in with monthly operations. Contact: Doug Wagner, 661-589-0391 email: carldw@aol.com GEHAMS web: ww.gehams.org

Golden State Model Railroad Museum – East Bay Model Engineers Society

900-A Dornan Drive in Miller-Knox Regional Park at Point Richmond. Weekly public hours are on our website. To meet members, inquire about membership and behind the scenes tours come 1st & 2nd Friday evenings of the month between 7:30 and 10 PM.; behind the scenes tours also available most Wednesdays 11 AM to 3 PM. New members are welcomed in all Scales – O, HO and N, including narrow gauge and traction. For general information check the website or call (510) 234-4884 (recording); for membership inquiries call 1st or 2nd Fridays 8-10p.m. (510) 236-1913. For other information or to schedule special events, Email info@gsmrm.org. Website: www.gsmrm.org

Humboldt Bay & Eureka Model Railroad Club

The HB&EMRC meets at their clubhouse and layout at 10 West 7th St., Suite #C in Eureka, on Sat., 7:00 PM. Visitors are always welcome. Business meetings 1st Sat of month, 7:30 PM. Contact: David Berriman P.O. Box 915, Arcata, CA 95518 707-825-7689

Monterey & Salinas Valley Railroad Museum

26 Station Place - Salinas, CA 93901
The Monterey and Salinas Valley Railroad Museum is dedicated to creating & maintaining a Railroad Museum in Salinas with an emphasis on the historic, contemporary and future value of the Railroad to the Salinas Valley and Monterey Bay Regions, providing experiential educational opportunities for children of all ages enhancing the core curriculum and inspiring civic involvement in our communities.

Open first weekends of each month 10AM - 4PM
831 789 8097

www.msvrr.org
info@msvrr.org

Enjoy the fellowship and learning experiences of a club near you

HAVE 50 MODEL RAILROADING CLINICS RIGHT IN YOUR LIVING ROOM.

Just because you can't make it to a national convention doesn't mean you have to miss out. Right now the NRMRC's Kinlock Memorial Library has over 50 DVDs of clinics presented at national conventions from 2001 to 2010. Each is available for NRMRC members to borrow for the cost of processing and postage.

So you can see clinics on everything from decoders to diags, tracks to techniques, bridges to highways, and models to train casing.

All from the comfort of your very own couch.

Visit www.nrmrc.org and go to the Kinlock Memorial Library page for a complete listing. Or call the Library at 423-894-8144.

We make it even more fun.

Then, get that popcorn ready.

Continued on page 44

Napa Valley Model Railroad Historical Society

Located at The Napa Valley Expo, (fairgrounds), 575 Third St., Napa, our railroad runs from Napa to Ukiah with off line connections to Stockton and Portland, has 700 feet of main line, and large classification yards at each end. The layout is never finished, as we are always rebuilding and improving! Era is 1940 to present. Member-owned rolling stock stresses reliability and realism. We meet Fri. 7:30 PM to 12, with formal runs the 2nd Fri. of the month. Info: John Rodgers 707-226-2985 E-mail: Napa-John@napanet.net Web: www.nvmrc.org

Nn3 Alliance

Our 700 members in nine countries model narrow gauge in "smaller scales". Nn3 describes 3', 3'6", and meter gauges, modeled in N or 2MM Scales. Our local portable exhibition layouts and modules regularly appear at conventions and shows. The Nn3 Handbook, 140 pages with 400 illustrations, covering all aspects of small scale narrow gauge, is available through the address on the website. Official mailing address: The Nn3 Alliance, PO Box 6652, Chesterfield, MO 63006 Web: www.Nn3.org <http://groups.yahoo.com/group/nn3/>

Sacramento Model Railroad Historical Society

Established in 1948, the SMRHS is located at 1990 Grand Ave., Sacramento. Modeled as the Sierra Central RR, both HO and HOn3 layouts. HO layout is being rebuilt to depict SP/WP prototype. Open Tues. and Fri. nights, 7:30 PM. Contact: 916-927-3618 Email: d.megeath@comcast.net Web: www.smrhs.com

Sacramento Modular Railroaders

Most of our events are operating sessions, where we make up trains in our large switch yard, and send road crews out to switch cars into and out of industries at the towns along the main line. The club owns a large main yard, the corner modules, some special modules, and some rolling stock. Members own their own modules and rolling stock. Contact: memberhip@sacmodularrailroad.com

Sacramento Valley Live Steam Railroad Museum (SVLSRM)

The SVLS was founded in 1968 and is located in Hagen Community Park, Rancho Cordova, CA. Our initial 1500 feet of track has expanded to over 6300 feet of mainline and sidings. Approximately 1500 feet is dual gauge 4 3/4" and 7 1/2". We can accommodate equipment ranging in size from 1 inch scale (standard gauge) to 5 inch scale (2 foot narrow gauge), the most common scale being 1 1/2". Public run days are on the 1st Saturday and 3rd Sunday of each month during our operating season

San Joaquin Valley Garden Railway Society

The SJVGRS was founded in July of 1995 to promote the joy of building and operating Garden Railways. We have grown to over 70 families in the Central Valley, meeting monthly at members' homes to spend the afternoon sharing our hobby, weather permitting. Dues: \$25 a year for a family. Contact info: Richard Emerson 559-439-7173 E-mail: emerson.r@worldnet.att.net Web: <http://home.att.net/~sjvgrs/train/>

San Joaquin Valley Toy Train Operators

We are an all scale train club. We have members in scales from Z to G. Whether you are someone who likes to run toy trains in circles or model an exact date, railroad or scene or anything in between you are welcome. Everyone who likes trains is welcome. You don't need to own any trains. We have two portable layouts that we set-up at public locations. We have set them up at care facilities, Amtrak stations, train shows and other places. We also have outside club activities. We have gone on the train to Sacramento and the Sacramento Rail Museum. We've ridden the train at Railtown 1897 SHP and had a private tour there. Also we have visited home train layouts and will have many other activities in the future. Our meetings are at the Scouts Hall, 4717 Elm Street, Denair, CA at 1:30 PM (doors open at 12:30) on the first Sunday of each month. Holidays or other events can change that. We always get there by 1:00 PM to visit and see what others have brought to show. For more information please call Ed Cathcart at 209-479-4432

Enjoy the fellowship and learning experiences of a club near you

Continued on page 45

San Leandro Historical Railway Society

The SLHRS models the SP from Oakland/San Leandro to just east of Norden using the tri-level Donner Pass plan featured in the March '98 Model Railroader. It's housed in the former S.P., San Leandro depot, located at 1302 Orchard Ave., San Leandro (just off Davis St.). Work sessions Sat. 9:00 AM - 1:30 PM and Tues. 7:30 - 9:30 PM, business meetings the 1st Fri. at 7:30 PM. Contact: Eugene Brichacek, 510-963-2965 email: embrichacek@gmail.com

San Luis Obispo Model Railroad Association (SLOMRA)

The SLOMRA is a multi-scale modular group with active N and HO scale layouts. The goal of our nonprofit association is railroad education and local history through public display of our modules. Our shows usually include G-gauge, tinplate, and even LEGO trains. The monthly meetings include model and prototype activities, videos and discussions. The SLOMRA is open to new members who have a love of trains. The general meeting is the third Monday of every month at 7:00pm at the Oceano Depot. For more information visit www.slomra.org or email info@slomra.org.

Silicon Valley Lines

The SVL is located at 148 E. Virginia St., San Jose. We meet Fri. 7:30 to 11:30 PM, with business meetings the 1st Fri. and operating sessions the last Fri. of the month. Our HO layout utilizing DCC for realistic operations, computer-generated train orders and radio-based dispatching. E-mail: svl@siliconvalleylines.com Web: www.siliconvalleylines.com

Siskiyou Model Railroad Club

Currently we are meeting at a member's home on the first Thursday evening of the month. Contact Tom Brass at 530-842-4921 or Glenn Joesten at 530-842-2359 for current info. The layout is still in the Yreka Western freight room, but is inoperable due to no power in the building. #19 was still in the engine house last we saw, but in "kit form." No further info. Currently a few members have been getting together on Tuesday mornings for various activities.

South Bay Historical Railroad Society

SBHRS invites interested modelers to visit us in the historic Santa Clara CalTrain Depot, 1005 Railroad Ave., Santa Clara, Tues. 5:00 to 8:00 PM or Sat. 10:00 AM to 3:00 PM. Contact: 408-243-3969. Web: www.sbhrrs.org.

Sonoma Short Line (SSL)

A group of model railroaders has formed a DCC, HO 100% NMRA club, Sonoma Short Line (SSL). The club is building a modular layout with a Sonoma County theme inspired by the period 1900-1950s. Private ops sessions and public shows are scheduled. SSL is looking for new members with skills in all aspects of model railroading and a desire to actively participate in the club. Contact Steve Lewis (707) 527-0396 or Steve Skold (707) 539-1782 for further information.

South Coast Society of Model Engineers

The club consists of enthusiasts of all scales and prototypes living in the Santa Barbara area, and has a collection of railroad books and videos for loan to members. The club has no layout but activities include weekly operations and work sessions at member layouts, as well as occasional club field trips. We meet every 3rd Tues. at 7:30 PM, at Woodglen Hall, 3010 Foothill Road, Santa Barbara. Junior members welcome. Contact: Secretary David Kuehn, email: davidkuehn@cox.net. Facebook: <http://www.facebook.com/group.php?gid=163470062239>

The Tidewater Southern MRC Inc. & Tidewater Southern Railway Historical Society Inc. reorganized and incorporated in 2018. We are Located at the San Joaquin Fairgrounds, Building 1, (corner of Airport and Charter Ways (Hwy 4), Stockton), a 2,400 sq. ft. alcove houses a large HO layout depicting the Tidewater Southern, & Freelanced N-Scale. We meet 2p-7:30p Thursdays. 10a-3p Saturdays events permitting. Contact: Tiffany Barning 135 W. Emerson Ave. Tracy, CA 95376 E - mail: tidewatersrhs@gmail.com

Tri-city Society of Model Engineers

The TCSME located in the Niles Plaza is currently looking for new members to help build and operate both an N Scale and an HO layout focused on Fremont and surrounding areas. We meet Fridays 7:30-9:30 PM. The depot is located at 37592 Niles Blvd, Fremont, CA 94536. Please visit our web site at <http://www.nilesdepot.org/> <http://www.nilesdepot.org>

Enjoy the fellowship and learning experiences of a club near you

Walnut Creek Model Railroad Society

The WCMRS located at 2751 Buena Vista Ave, Walnut Creek, is open to last Friday of the month from 8:00 to 10:00PM for operations. Fares are \$2.00 for 6-12 and seniors over 60 and \$3.00 for adults. Membership is always open to interested HO modelers. Contact: 925-937-1888 (recorder). Web: www.WCMRS.org. "Like Us" on Facebook (www.facebook.com/wcmrs). 2019 week-end schedule: Jan 19-20, Mar 16-17, May 18-19 and Sept 14-15 (11:00AM-6:00PM). Holiday Open House schedule: Nov 22-24 & Nov 29 - Dec. 1.

West Bay Model Railroad Association

The West Bay Model Railroad Association is accepting new members; all skills are invited. Construction and scenery are now complete on our DCC 2-level HO layout designed for operations; work on signaling is in process. Work sessions are Wednesday evenings and Saturday afternoons. Prospective members and visitors are always welcome. We run trains for visitors monthly on second Saturday afternoons. Business meetings are at 8 pm on the third Wednesday of the month, and operating sessions are on Saturday of the following week. We're located a few hundred feet south of the Menlo Park Caltrain station, in the former baggage building, at 1090 Merrill St., between the station and Ravenswood Ave. For more information, visit wbmrra.ning.com and facebook.com/wbmrra. Or e-mail westbaylines@gmail.com.

Enjoy the fellowship and learning experiences of a club near you



Web Announcement
 By Gus Campagna,
 Manager, PCR
 Publications Department
 New pages added to the Website. We are in the process of adding a page to display Layout Stories. We are seeking submissions from layout owners to tell the story of their layout. Details are on the page about what we are looking for. Check out the Layout-stories page on www.pcrnmra.org

We not only welcome your input here at the *Branch Line*, we actively encourage it!

In fact, may we say that we go so far as to solicit your input?

If you have a small article you would like to submit for publication, or even just an idea for an article, please let us know. We will be happy to work with you.

Just contact our editor, Chip Meriam, at:

chipmeriam@comcast.net

We're looking forward to hearing from you!





NATIONAL MODEL RAILROAD ASSOCIATION, INC.

Wow! Did you know there's a new NMRA Member Benefit?

It's the NMRA Partner Program!

Model railroad manufacturers are partnering with the NMRA to offer discounts to NMRA members.

Current members log in to www.nmra.org. At the Members Menu, go to the NMRA Partnership Page to see who's on the list, discounts offered, and how to order. New Partners are coming on board every month, so check back often.

If you're not yet a member, here's another great reason to join and get more fun from your hobby with a membership in the world's largest model railroad organization.

www.nmra.org

A proud Partner with



The best gift card you'll ever give.

(Or receive!)

When you give the gift of an NMRA membership, you're giving someone a gift they can use all year long. From accessing our online photo archives to getting special deals on books, to attending Division and Region meets, an NMRA member has a wealth of benefits to take advantage of.

We'll send your new member a membership card, then bill you separately. Call HQ for details and ordering. Allow 4 weeks for processing.

Perfect as a gift for holidays, birthdays, graduations, Fathers Day, Mothers Day...even Valentine's Day!

This year, give a card they'll treasure all year!



We make it even more fun.

www.nmra.org
423-892-2846