



The Daylight Observation

Official Publication of the
Daylight Division, PCR / NMRA
Volume 37, Issue 1
Jan-Feb-Mar 2023

Daylight Director's Message: In Person, Zoom, or Hybrid?

By Walter Mizuno, Daylight Division Director

Contents

Director's Message	1
Call Board	2
Bakersfield Train Show	3
Membership Gauge	3
Member Aid	4
St. Louis 2022	7
In Memoriam	7
Daylight Calendar	11
Observation Schedule	12



Model railroading activities have started to return to normal. Many of the shows that were cancelled during COVID have returned as in-person events. Many recent conventions and shows had good attendance, but still lower than pre-COVID numbers. The Daylight

Division numbers have not been as good as hoped.

During the lockdown, many of us took to devoting more time to completing modeling projects that had been put off due to lack of time. Many of our meetings moved to virtual meetings, where many of us became Zoom experts. We, in the Daylight Division were no different than the rest of the population. We began meeting by Zoom and continue to do so. Our return to in-person meetings began last May with a hybrid meeting where some of our members joined by Zoom. We learned how to do hybrid meetings. Our next meeting originating from the Historic Kingsburg Depot was also hybrid. We learned a bit from our first meeting and made some changes. An improvement, but we still need to change a few



Continued on Page 2

Director

Walter Mizuno
(559) 977-8577
wkmizuno@gmail.com

Superintendent

Vacant

Chief Clerk / Paymaster

Milton SansSoucie
(714) 528-8624
miltonss@sbcglobal.net

Observation Editor

Robert Pethoud
(559) 438-7705
pethoud@comcast.net

Clinics

Doug Wagner
(661) 589-0391
carldw@aol.com

Contest

Chuck Harmon, MMR
(559) 299-4385
harmonsta@yahoo.com

Achievement Program And Webmaster

Dave Grenier
(408) 431-8989
grenida@pacbell.net

Member Aid

Robert Pethoud
(559) 438-7705
pethoud@comcast.net

Membership

Doug Wagner
(661) 589-0391
carldw@aol.com

things to make the experience better for all the attendees.

A new budget item for the region is to allocate funding for Zoom subscriptions to support another avenue for interaction and camaraderie among its members. There is a debate going on in the planning of our next meeting in the spring. We are planning another hybrid event. My personal preference is to hold the meeting in-person, but for various reasons, Zoom offers many advantages over in-person meetings such as time, money, and gas savings. During the SPC 2021 PCR convention, held entirely online, many attendees remarked that had it not been for Zoom, they would not have attended an actual in-person convention because of distance, cost, or a medical disability prohibiting lengthy trips. We did have attendees from New Zealand, Canada, and the UK, who otherwise would not have attended.

We are planning to make better use of regional tools to publicize the upcoming events including the use of Constant Contact.

In the coming months, we hope to be able to offer the division members hands-on clinics in weathering, conducted by Neil Fernbaugh. I'm hoping to hear from you as to how we can improve the division to attract more members and get them involved in the activities to derive more value from their membership. My email address is: wkmizuno@gmail.com. I hope to hear from each and every one of you with any comments to improve our organization.



Bakersfield Model Train Show Celebrates Year 29

By Doug Wagner

The Golden Empire Historical and Modeling Society, of Bakersfield, will be hosting their 29th annual Bakersfield Model Train Show happening the first weekend of March—March 4th and 5th. It will be at the Kern County Fairgrounds, 1142 South “P” Street, Bakersfield, California, 93307. Hours of the show are, Saturday, March 4th, 10:00 AM – 5:00 PM and on Sunday, March 5th, 10:00 AM – 4:00 PM. There will be 20,000 square feet of operating layouts, from Fresno to Los Angeles, and model train vendors from all over California, participating, in the show.



This edition of the show will also offer hourly door prizes and a show-ending raffle of a 3’ by 6’ N scale layout. Winner need not be present to win the N scale layout but must make plans to be able to pick it up from the Golden Empire Historical and Modeling Society. Admission is \$8.00 for adults aged 13 and older and kids ages 12 and under are admitted FREE. For more information, please visit the Golden Empire Historical and Modeling Society’s website at www.gehams.club or email Kevin Birkbeck at kevin4strings@gmail.com, or by phone at (661) 496-9514.

Daylight Division Membership Gauge	
November 30, 2012	144
November 30, 2021	97
December 31, 2021	95
January 31, 2022	93
February 28, 2022	92
March 31, 2022	92
April 30, 2022	93
May 31, 2022	90
June 30, 2022	86
July 31, 2022	85
August 31, 2022	85
September 30, 2022	84
October 31, 2022	83
November 30, 2022	82

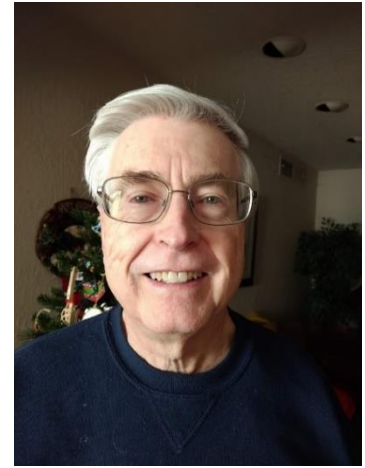
Daylight Membership by County	
<u>County</u>	<u># Members</u>
San Luis Obispo	22
Fresno	16
Santa Barbara	15
Kern	15
Tulare	6
Merced	3
Madera	3
Mariposa	2
Total Members	82



A Mundane Building

By Robert Pethoud

Just over three years ago, I reviewed Lance Mindheim's book, *Model Railroading As Art*; see Daylight Observation 2019, issue number 2 (April-May-June). One of the reasons Mr. Mindheim's model scenes are so realistic is his liberal use of empty space and nondescript structures to highlight the few important buildings. On page 73 of the book, the



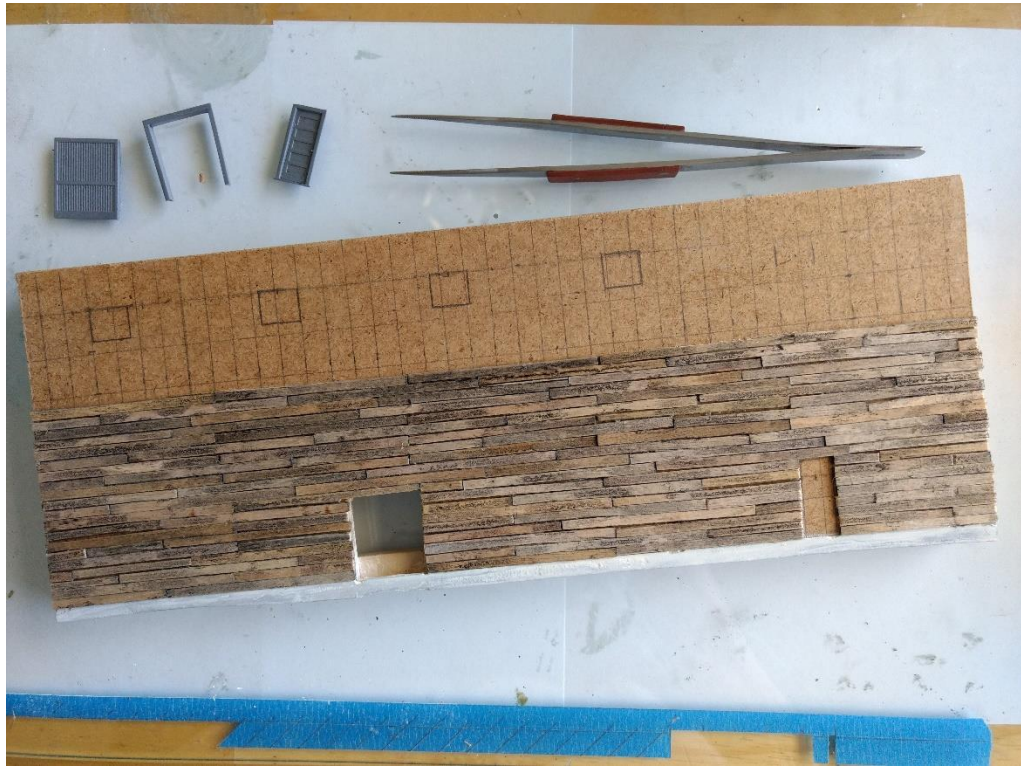
author states, "In order for a scene to work there has to be a balance of mundane and key elements. And, that balance has to be steeped in favor of the mundane."

To emphasize the cannery which I recently built for the town of Bullfrog, I wanted such a "mundane" structure, not served by rail, in the space between Cascade Canning and the Bullfrog Lumber Company's planing mill. What features should we build into such a structure, in order that our eyes will pass over it without its drawing much attention?

First, its location should not be prominent. Situated between the two large industries in Bullfrog, potentially it could be quite prominent, but it is against the backdrop and can be de-emphasized. Next, its shape ought to be ordinary, such as a simple rectangular box. We will want no unusual roof lines or odd angles to spark visual interest. Its height should be less than our signature structures. The building's color ought to be a muted pastel so as to fade into the background. Finally, there should be a dearth—or complete lack—of signage and few details, such as fire escapes, downspouts, and utility meters. In summary, here are the features we want in a "mundane" building:

- Location: not prominent
- Ordinary shape
- Lower than important structures (but not necessarily smaller in footprint)
- Muted pastel color, with focal point structures warmer and/or darker in color
- Lack of signs
- Few details

The first photo (p. 5) shows what I came up with. It's a simple rectangle with few details and no signs, lower than the cannery and placed at the back of the layout. To construct this unremarkable building, I began with a 1/8" hardboard



wall to which I added a 3/8" square poplar frame to the back. I found a few plastic windows, a cargo door, and a manway door from Tichy or Grandt Line and created a whole in the wall for the cargo door, but none for the other details.

The next task was to create the boards from Starbucks stir-sticks. I was able to get three 16-scale-foot long sections from each one after cutting off the curved ends. Then I sliced each section in two lengthwise to get boards about 9 HO scale inches wide, instead of 18" wide. This step can be skipped if you build in 1:48 scale instead of 1:87. When I had enough of these boards, I stained them with 1 tsp. of India ink in a pint of 91% isopropyl alcohol.

Before attaching the boards to the wall, I drew both horizontal and vertical lines on the hardboard to help place those boards. The vertical lines are placed two scale feet apart for the wall studs, while the horizontal lines are simply to keep the boards lined up all the way from top to bottom. Then I clamped a styrene strip 1/4" above the bottom of the wall and slathered DAP Wallboard Joint Compound below the strip to represent the concrete foundation. When dry, I removed the styrene and painted the "concrete" a medium gray with craft acrylic paints.

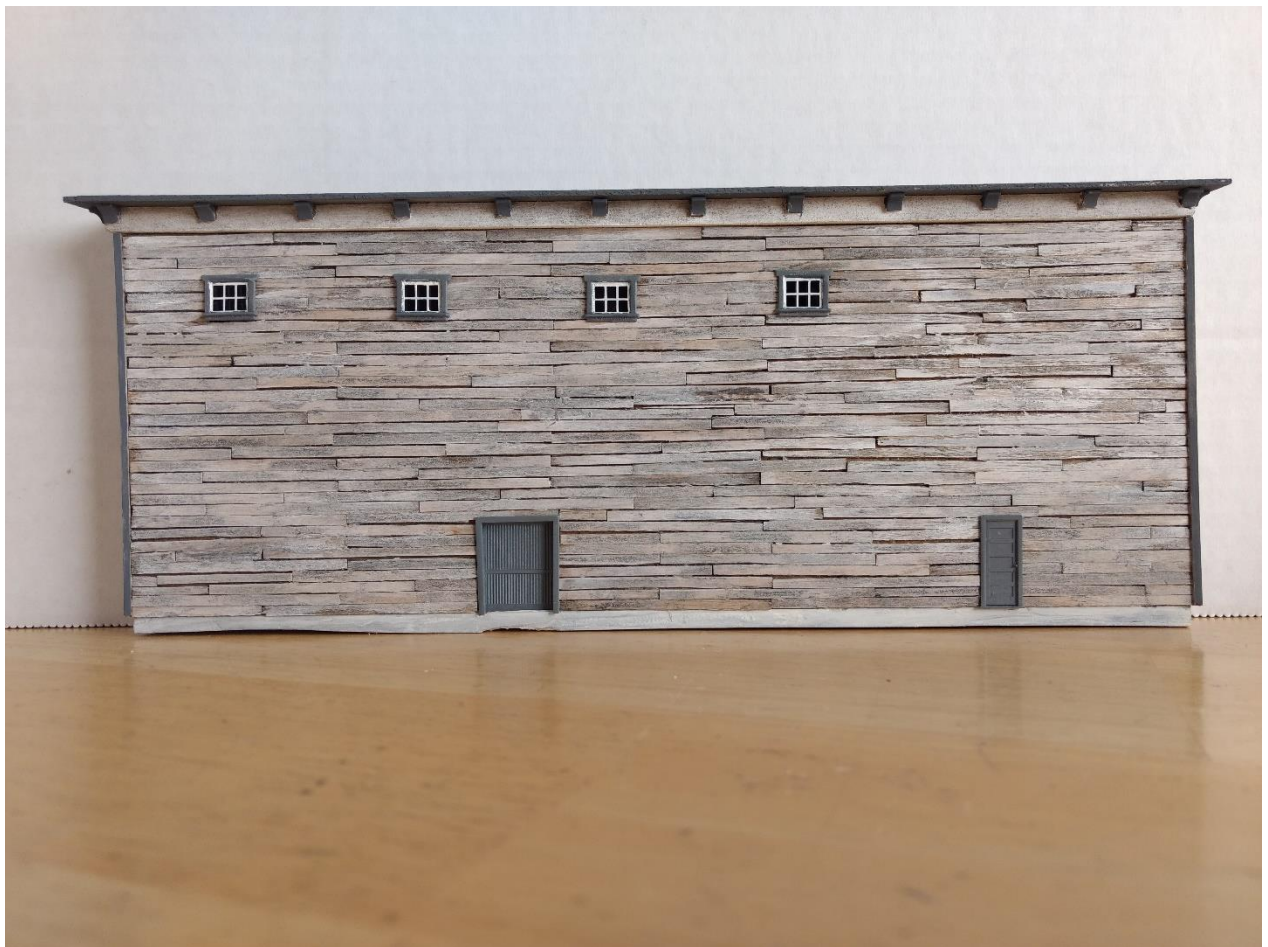
Finally, it was time to attach the boards to the wall with yellow carpenter's glue. I worked from the bottom up, being careful not to have adjacent boards end at the same stud. See the photo illustrating this process. After the siding was

Concluded on Page 6

completed on the main wall, I added a 1/16" square trim piece at each end to serve as a guide for placing the boards on the two short side walls. Then, before attaching the doors and windows, I painted all the boards using a brush with a little water to stretch the white acrylic craft paint. The result, I hope, is a well-weathered finish.

The windows were painted white with a Rust-Oleum Gloss White rattle-can. When dry, the window muntins were covered with blue painter's tape before I sprayed the windows—and the two doors—with Rust-Oleum Gloss Dark Gray, chosen because its hue essentially matches that of DecoArt Crafter's Acrylic Slate. That way, I can spray the dark gray color and touch it up with a brush, if necessary. Before attaching the windows with Formula 560 canopy glue, I cut small squares of black 35 mm photographic film to fill in for glass in the window panes.

To finish off the structure, I cut 14 corbels from 1/4-round wood stock, crown molding from 1/4" thick stripwood, and an overhang from 1/16"-thick basswood. See the photo below, with the three elements already placed at the top of the wall.





NMRA 2022 Convention in St. Louis, Missouri: Part 2

Text and Photos by Bruce Morden

On Thursday I took a rail excursion on shared trackage behind locomotives from the Terminal Railroad Association of St Louis. We left St Louis Union Station behind two GP38s and several retired Amtrak Amfleet cars. We traveled slowly east along the yard and waited for the departure of Amtrak train 22 the Texas Eagle before crossing the Mississippi River on the 105-year-old McArthur Bridge which is owned by TRRA. We went north along the river to a large yard where we stopped and backed up all the way to Union Station where we started. The photo above shows two GP38-3 locomotives at St Louis Union Station ready for our tour on the TRRA.

Daylight Division In Memoriam		
<u>Member</u>	<u>City, State</u>	<u>Date Joined</u>
Jimmie Martin	Bakersfield CA	1/1/1970(Lifetime Member)
Gene Rutledge	Visalia CA	1/1/1985(Lifetime Member)
Mike O'Brien	Bakersfield CA	07/01/2009



View of downtown St Louis and the Gateway Arch from the McArthur Bridge on the TRRA

I managed two operating sessions while at the convention. On Tuesday I operated on a free-lanced SOO Line railroad and on Thursday I was a boomer on a Frisco railroad. Both took about 8 of us to bring the railroads alive. We worked well together and both railroads ran for over three hours and numerous trains. I got to dispatch the Frisco for an hour before I headed out and took a local and later a through freight.

F-units crossing a bridge on Bob Johnson's Pseudo Soo Line





Operating crew working at Ladysmith Yard on Bob Johnson's Pseudo Soo Lines



Local behind an Alco at a grade crossing on John Peluso's Frisco Lines



Gordy Robinson (in the hat), current NMRA President, visiting John Peluso's (in the green) at his Frisco Lines during the LDSIG Wednesday Layout Tour



Crossing one of the many bridges on John Peluso's Frisco Lines



January 15, 2023 - 1:00 – 4 pm. **The San Ramon Valley Branch** (SRVB) of the Southern Pacific Railroad Historical Model Railroad Layout Group, present an N-scale model of the SRVB as it was circa 1914 to 1924 at the new [Concord Historical Society Museum Exhibit Space](#), 1928 Clayton Road, Concord, CA. ([MAP](#))

Built by PCR members Pete Birdsong, Brian Booth, Dave & Emma Connery, Wayne Floyd, Paul Ingraham, Steve Lane, Mike O’Dorney, and Doug Smith, the model currently includes the towns and depots at Avon, Concord, Walnut Creek, Danville and San Ramon, and will be continued to include more locations in the future. ([FLYER](#))

Visitors will see realistic models of structures, scenes and trains operated as they once ran through these central points in the local area. The modelers will be available to discuss the railroad, its customers and equipment from the era, and talk about how they are recreating this historic slice in time.

January 28 – 29, 2023 - 10:00 am to 4:00 pm, [Great Train Show](#), Cal Expo, 1600 Exposition Blvd, Sacramento, CA. • [MAP](#)

Show Highlights:

- 2 PACKED BUILDINGS, full of dealers with ALL sizes & Scales!
- 350+ Tables of trains for sale and exhibitors from across the country!
- Dealers with everything imaginable for trains & Model Railroading!
- Engines, Rolling Stock, DVD's, Hats, Scenery Material, Track, Trees, Decals, T-Shirts, Books, Magazines, Tools, Lionel, DCC, Thomas, New, Used, Collectible, Everything Trains!
- Operating Model Railroads in a variety of Sizes & Scales!
- Door Prizes!

February 11, 2023 – 10 am to 5 pm California State Railroad Museum, 125 I Street, Sacramento, CA, offers free admission to NMRA-PCR members. Email RSVP to Dave Putnam at dave@daveandlisa.net by 5 pm on February 8 to be placed on an admission list.

March 4 – 5, 2023 – 10 am to 5 pm Saturday, 10 am to 4 pm Sunday, Bakersfield Model Train Show at the Kern County Fairgrounds, 1142 South “P” Street, Bakersfield, CA. See the article by Doug Wagner on page 3 for more details.

March 25 – 26, 2023 - 10:00 am to 4:00 pm, [Great Train Show](#) at the [San Mateo County Event Center](#), 1346 Saratoga Drive, San Mateo, CA 94403. • [MAP](#)

Show Highlights:

- PACKED BUILDING, full of dealers with ALL sizes & Scales!
- 350+ Tables of trains for sale and exhibitors from across the country!
- Dealers with everything imaginable for trains & Model Railroading!
- Engines, Rolling Stock, DVD's, Hats, Scenery Material, Track, Trees, Decals, T-Shirts, Books, Magazines, Tools, Lionel, DCC, Thomas, New, Used, Collectible, Everything Trains!

March 25 – 26, 2023 - 10:00 am to 4:00 pm, [Great Train Show](#) at the [San Mateo County Event Center](#), 1346 Saratoga Drive, San Mateo, CA 94403. • [MAP](#)

Show Highlights:

- PACKED BUILDING, full of dealers with ALL sizes & Scales!
- 350+ Tables of trains for sale and exhibitors from across the country!
- Dealers with everything imaginable for trains & Model Railroading!
- Engines, Rolling Stock, DVD's, Hats, Scenery Material, Track, Trees, Decals, T-Shirts, Books, Magazines, Tools, Lionel, DCC, Thomas, New, Used, Collectible, Everything Trains!
- Operating Model Railroads in a variety of Sizes & Scales!
- Door Prizes!

April 26 – 30, 2023 - [Rails by the River 2023](#), Joint PCR/FRRS 2023 Convention. Courtyard by Marriott Sacramento Cal Expo, 1782 Tribute Rd, Sacramento, CA 95815. • [MAP](#)

August 20 – 26, 2023 - [Texas Express 2023](#), NMRA National Convention, Hosted by [Lone Star Region](#). Convention Hotel: Gaylord Texan, 1501 Gaylord Trail, Grapevine, Texas, USA • [MAP](#)



Observation Schedule

<u>Issue</u>	<u>Articles Due</u>
Winter (Jan-Feb-Mar)	December 10
Spring (Apr-May-Jun)	March 10
Summer (Jul-Aug-Sep)	June 10
Fall (Oct-Nov-Dec)	September 10



**The Daylight Observation
The Official Publication of the
Daylight Division,
PCR / NMRA
Volume 37, Issue 1
1st Quarter, 2023**

The Daylight Observation is published quarterly to inform members of division activities and to provide educational articles for the advancement of railroad history and the art and science of model railroading. It is distributed to all members of the Division and to officers and newsletter editors of other divisions in the PCR.

Copyright 2022, Daylight Division, Pacific Coast Region, National Model Railroad Association. Permission to reprint is hereby granted to all other affiliates of the NMRA. Others may request permission to reprint from the editor:

Robert Pethoud
460 West Vartikian Avenue
Fresno, CA 93704
Phone (559) 438 – 7705
e-mail: pethoud@comcast.net



The Daylight Observation

Daylight Division

Pacific Coast Region

National Model Railroad Association

Daylight Observation
460 West Vartikian Avenue
Fresno, CA 93704-1441

Return Postage Guaranteed
Address Correction Requested