



# The Daylight Observation

## Table of Contents

Summer Meet in Oceano .....	1-5
Daylight Call Board .....	2
Coming Attractions .....	3-4
Fall Meet in Santa Barbara .....	5
Director's Report .....	6
Need a Little Push? .....	7-8
Contest Policies .....	7
Address Changed? .....	8
Keeping Connected .....	8
Members' Aid .....	9
Contributions to the Observation .....	9
Doug's Layout Odyssey .....	10
Porterville-Orosi Branch Golden Spike ..	11
Circus Train Schedule .....	11
Welcome Aboard .....	12
Membership Manager .....	12-14
In Memoriam .....	13
Central Coast Train Festival .....	14
NMRA eBulletin - July .....	15-19
National Convention - Portland .....	15
NMRA InfoNet - June .....	16-18
New MMRs .....	19

## Daylight Division

# Summer Meet at Oceano

Coordinated by George Gibson

The Next Daylight Meet will be on Saturday, August 1, 2015 at the Historic Oceano Depot, a restored 1904 SP Depot at 1650 Front Street, Oceano, CA 93445

We hope you can join us for a fun-filled day of activities, including clinics, model and photo contests, layout tours, door prizes, the "World Famous" Daylight White Elephant Auction (well, WE know about it!), and, of course, the obligatory quarterly Daylight Division business meeting. As a special treat, our hosts will be serving a BBQ Tri-tip lunch.



Helping us with this event is the [San Luis Obispo Model Railroading Association \(SLOMRA\)](#) and the [Oceano Depot Association](#). We appreciate their assistance and hospitality.

Doors open at 9:00AM with registration, refreshments, contest entries, socializing and more. The program begins at 10:00 AM.

Just for those needing additional incentive for coming over the hill to the Central Coast, the weather is ideal and the temperature is mild. Come on over and escape the valley heat for a day, or better yet, spend the weekend. For information on what there is to do, see [SLO Sights](#) from the 2014 PCR convention website.

Registration: \$4.00 for NMRA members, \$5.00 for non-member guests. Add \$10.00 for the delicious Tri-tip lunch.

- Schedule:
  - 9:00 am – Registration, Contest Check-ins, Refreshments, Socializing
  - 10:00 am – Clinics
  - 12:00 pm – BBQ Tri-Tip Lunch served on site
  - 1:00 pm – Daylight Business Meeting, Door Prizes, White Elephant Auction
  - 2:00 pm – Outside Activities & Layout Tours



Stay in touch with your hobby and Daylight Division. Go to [www.pcrnmra.org/daylight/](http://www.pcrnmra.org/daylight/)

Send your ideas and stories and photos of your rail fanning and of your model railroad. We are always looking for the next great story and photo.

*Continued on Next Page*

## Daylight Call Board

### Superintendent

Neil Fernbaugh • [marmot47@sbcglobal.net](mailto:marmot47@sbcglobal.net)

### Director

Dave Grenier • [grenida@pacbell.net](mailto:grenida@pacbell.net)

### Chief Clerk / Paymaster

Bob Sexton • [rdsexton57@gmail.com](mailto:rdsexton57@gmail.com)

### Membership

Doug Wagner • [carldw@aol.com](mailto:carldw@aol.com)

### Member Aid

Bob Pethoud • [pethoud@comcast.com](mailto:pethoud@comcast.com)

### Industry Liaison

Mike OBrien • [obsmobile@msn.com](mailto:obsmobile@msn.com)

### Contests

Chuck Harmon • [harmonsta@att.com](mailto:harmonsta@att.com)

### Achievement Program

Dave Grenier • [grenida@pacbell.net](mailto:grenida@pacbell.net)

### Layout Tours Coordinator

Gary Saxton • [gbs46@sbcglobal.com](mailto:gbs46@sbcglobal.com)

### Clinics Coordinator

Doug Wagner • [carldw@aol.com](mailto:carldw@aol.com)

### Parliamentarian

Brewster Bird • [mec569@aol.com](mailto:mec569@aol.com)

### Observation Editor

George Pisching • [gmpisching@netzero.com](mailto:gmpisching@netzero.com)

## Support our State Parks ...



# Daylight Meet

- Clinics (As of: 07/17/2015 20:46:59)

Phil Lawyer, SLOMRA President - Phil will present a PowerPoint presentation on voltage loss and power protection for layouts and modules. He and another member came up with a calculator that you can put in track code, bus size and other factors to give you how long of a run you should have before putting in a different power district.

NEW Clinic by George Gibson - Simple flicker-free circuit for powering interior coach lights from DCC track power.

- Contests Categories

**Models: Structures**

**Photos: Model Black & White**

There will be favorite and judged model contests. The photo contest is a popular vote contest. Only NMRA members in good standing may enter the contests. Non-NMRA guests are encouraged to bring display-only models and photographs. Awards will be presented to the winners of each contest. See the [Contests](#) page for more information about the contests and future contest categories.

There will be tables for display-only items, in addition to contest entries. Please bring whatever items (prototype, model or photograph) that you are especially proud of and would like to display for our enjoyment.

- Door Prizes & White Elephant Auction

Donations of new, unused items for door prizes are especially welcome.

Drawing Prizes: The [San Luis Obispo Model Railroading Association](#) (SLOMRA) will be giving away an Athearn HO SP lighted caboose, an AT&SF 50' boxcar, and a Genesis SP FP7 passenger engine with DCC and sound! All models donated by [Athearn!](#) Every paid registration will be given a free ticket for this special drawing.

More Prizes: Heather and Jeff of [Central Valley Model Works](#) in Oceano have donated a \$100 gift certificate for purchase of any of their fine products.

And More Prizes: Anita of [Central Coast Trains](#) in Atascadero has donated two gift certificates for \$40 and \$25.

Whatever You Do! Remember to bring plain-wrapped railroad-related items for the White Elephant Auction. The more the merrier! Think of it as "re-gifting!" All proceeds benefit the Daylight Division.

- Lunch

Lunch will be prepared and served onsite by the Oceano Depot Association. A Tri-Tip sandwich, drink, and chips or salad will be offered for \$10.00, payable at registration. Let us know in advance that you are coming to the meet so we can have enough food. Please let us know by Saturday, July 25<sup>th</sup>.

[Click here to let us know you are coming and want lunch.](#)

*Continued on Next Page*

## Coming Attractions

See the PCR Events List on their web site: [www.pcrnmra.org](http://www.pcrnmra.org) for more detailed info.

**August 8 & 9, 2015** - 10:00 am to 4:00 pm [San Leandro Historical Railway Society](#), Summer 2015 Open House & Train Show, 1302 Orchard Ave (in Thrasher Park), San Leandro, CA.

**August 8 & 9, 2015** - Saturday 10:00 am to 5:00 pm, Sunday 10:00 am to 4:00 pm, Autumn Model Train Show, [Tehachapi Loop Railroad Club](#), West Park at the Tehachapi Recreation and Park District, 410 West "D" Street (off Mill Street), Tehachapi, CA.

**August 15, 2015** - [Redwood Empire Division](#) (RED) Summer Meet and Picnic, Ron Kaiser's home, 3241 Oak Farm Lane, Santa Rosa, CA.

**August 15, 2015** - 7:00 am to 4:00 pm, Swap Meet and Open House, [Santa Susana Railroad Historical Society](#), Santa Susana Park Pavilion. 6503 Katherine Road, Simi Valley, CA.

**August 23 - 30, 2015** - [Portland Daylight Express](#), NMRA 2015 Convention and National Train Show, Portland, OR.

**August 28, 2015** - 8:00 pm to 10:00 pm, Monthly Model Train Show, [Walnut Creek Model Railroad Society](#), in Larkey Park, 2751 Buena Vista Ave, Walnut Creek, CA.

*Continued on Next Page*

## Daylight Meet

If you have not already done so, send an e-mail to Dave Grenier at: [grenida@pacbell.net](mailto:grenida@pacbell.net). Both links are the same!

*Outside Activities & Layout Tours:* Addresses and driving directions/maps for the layout tours will be distributed at the meet.

- Layout Tours

Layout Tour A: Central Valley Model Works, Oceano - 1:00 to 3:00 PM. This HO layout was built by the late Jack Parker, owner of Central Valley Model Works. It is now operated by his son, Jeff, and Jeff's wife, Heather. It represents the Northern Pacific in Montana in the era from the early 1940s to the early 1960s. The often photographed scenes depict Logan, Montana. While considerable "artistic license" has been taken with the actual arrangement of Logan, the layout allows the simulation of the actual operation of Northern Pacific trains going to and from St. Paul and Tacoma.

The layout room is a generous 17' x 50', plus an extra eight foot extension on the east end for return loops. The track is, of course, Central Valley CVT. That product was designed and developed for and then used on this layout. Jack's good friend and fellow NP model railroader David Coster helped design the layout and also did all of the wiring. The layout features a great roster of detailed brass steam locomotives and these all are tuned and weighted to pull scale-length trains. Central Valley Model Works website: <http://www.cvmw.com/>

Layout Tour B: Central Coast Model Railroad, San Luis Obispo - 2:00 to 4:00 PM. The Central Coast Model Railroad occupies a 1500 square foot space in the [San Luis Obispo Railroad Museum](#). The HO scale model represents various aspects of railroad life in San Luis Obispo and northern Santa Barbara counties, including the geographical area, industries served, and train operations of the various railroads located there. A double-deck peninsula layout is utilized with realistic miniature recreations of up to 16 historic local railroad scenes along the Central Coast. Major features include the Pacific Coast Railway pier at Avila, San Luis Obispo, as a railroad division point incorporating the roundhouse, water tanks, the station with adjacent historic buildings, the Stenner Creek trestle and famous horseshoe curve.

The Southern Pacific Coast Line in HO scale is a two-level layout that will ultimately have a mainline run of over 500 lineal feet. We currently have 240 feet of the lower level now in operation. The Surf Depot area and the bridge crossing the Santa Ynez River are complete. The Stenner Creek Trestle (eight actual feet in length) is built and being installed. Track is laid for the San Luis Obispo yard, which is eight tracks wide and thirty feet in length. Many of the historic structures are in place. Where possible, all scenes are based upon actual SP track plans and 1950s era photographs.

Operationally, there are full-length passenger trains, including the colorful and renowned streamlined Daylight, the Lark and mail trains.

*Continued on Next Page*



## Coming Attractions

**September 2 - 5, 2015** - [35th Annual National Narrow Gauge Railroad Convention](#), Houston, TX

**September 4 - 6, 2015** - Friday: 7:00 to 9:00pm, Saturday & Sunday: 11:00 am to 5:00pm, Model Railroad Open House, [Lompoc Valley Model Railroad and Historical Society](#), 428 North I Street, Lompoc, CA. (southeast of Vandenberg Air Force Base in the Daylight Division)

**September 16 - 19, 2015** - [Scottsdale Express 2015, Pacific Southwest Region](#) 2015 Convention, The McCormick Scottsdale at Scottsdale McCormick Ranch 7401 N. Scottsdale Road, Scottsdale, Arizona.

**September 19 & 20, 2015** - 11:00 am to 6:00 pm, Weekend Model Train Show, [Walnut Creek Model Railroad Society](#), in Larkey Park, 2751 Buena Vista Ave, Walnut Creek, CA.

**September 25, 2015** - 8:00 pm to 10:00 pm, Monthly Model Train Show, [Walnut Creek Model Railroad Society](#), in Larkey Park, 2751 Buena Vista Ave, Walnut Creek, CA.

**September 27, 2015** - 9:00 am to 5:00 pm, [Coast Division](#) Meet, BPOE Elks Lodge, 2255 Santa Clara Avenue, Alameda, CA 94501.

**October 1 - 4, 2015** - [Central Coast Railroad Festival](#), San Luis Obispo and Northern Santa Barbara Counties, CA.

## Daylight Meet

Freight trains are shipping local produce, lumber, beets, oil and general merchandise. A maintenance of way train is also included. The model mainline will be over 500 feet long. Trains incorporate sound and radio control operations to present a realistic presentation of railroading along the Central Coast.

The Pacific Coast Railway HO<sub>n3</sub> model currently includes Avila Beach and the Harford Pier (nearly 16 feet in length), a four-foot high painted backdrop of the harbor area, and the town of Avila Beach in the early 1930s, including the award-winning wood truss bridge over San Luis Obispo Creek, as featured on the cover of the September 2012 issue of *Railroad Model Craftsman*.

**Layout Tour C:** Bill Obermeyer, Atascadero - 4:00 to 6:00 PM. This HO layout blends Southern Pacific and Santa Fe operations in the mid-1950s, plus a little before and a little after. Motive power consists of Southern Pacific Black Widow diesels and Cab Forwards and Santa Fe steam and zebra-striped diesels.

The layout is in a purpose-built 24 feet x 17 feet room. The layout is a dogbone that drops down to two levels. The top section starts at a High Sierra lumber mill scene with three reverse, staging, and passing loops and then goes through bridges to reach Glendale, California. The line then descends down to a desert section that resembles Monument Valley, Arizona, with passing sidings in between. After going through the desert, it emerges onto a bottom level and makes it way to the bottom three reversing loops that feature a wharf scene where lumber can be off-loaded to ocean-going ships.

Minimum radius is thirty-two inches and all track is Micro Engineering Code 83. Except for two curved Walthers turnouts, all the rest are Micro Engineering #7 turnouts. Layout is DCC with NCE controls. The room's backdrop features twelve long sections from BackDrop Warehouse that, with some difficulty, all match and blend together over a span of sixty feet.

The layout was constructed by Bill with one exception: Rick Fulkerson was a tremendous help with his vast knowledge of electronics and made custom control boards for automatic turnout controls on the six reverse loops. Without Rick's help, this would have never been done!

- [Local Hobby Shop with Layout Displays](#)

Central Coast Trains, Atascadero - 3:00 to 5:00 PM. This well-stocked model train store has three finished in-store display layouts in HO, N and O scale.

For those coming from areas where local hobby shops no longer exist, we still have one in this area. Central Coast Trains is located at 7600 El Camino Real in Atascadero, is a full-service model railroad hobby shop and is growing. Please visit their website for the latest news and upcoming celebrations. <http://www.centralcoasttrains.com/>

*Continued on Next Page*

# Division Meets for 2015

We have the locations for all the remaining meets, in 2015, set, and here they are:

Fall - November 7 --  
Santa Barbara at Gary Siegel's  
Southern Pacific Santa Cruz  
Division Garden Railroad

# Daylight Meet

And if you're looking for something unique or special and would like it ordered in time for you to pick up on August 1st, contact Anita directly and she will do her best to have it for you. Send her an e-mail at [anita@cctrains.com](mailto:anita@cctrains.com) to place a special order.

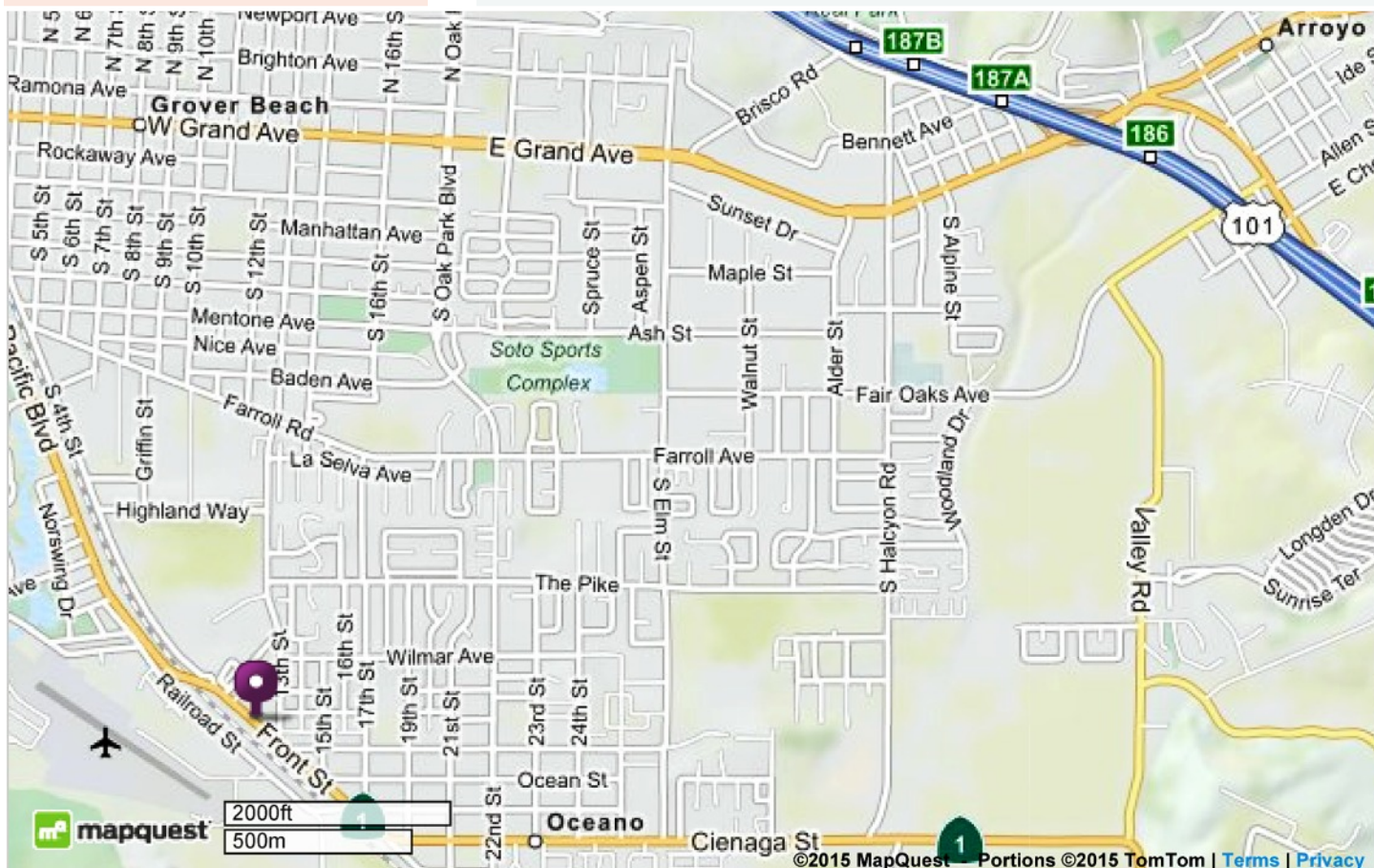
## Driving Directions to Meet [MAP](#)

From the South:

Drive North on US-101 and take Exit #182 / Los Berros Rd / Thompson Rd, go 0.3 miles, Turn Left on Los Berros Rd, go 4.7 miles, Turn Left on Valley Rd, go 0.4 miles, Turn Right on Cienaga St (Hwy 1) go 2.1 miles and the Oceano Depot will be on your left.

From the North:

Drive South on US-101 from San Luis Obispo and take the Hwy 1/Pismo Beach exit. Stay on Hwy 1 South thru Pismo Beach for 3.5 miles. After you cross the UP tracks on a bridge, the Oceano Depot will be on your right.





Dave Grenier received the prestigious PCR John Allen Award for 2015.



Doug Wagner received the Daylight Division Member of the Year Award.

## Daylight **DIRECTOR REPORT**

By Dave Grenier  
Director, PCR Daylight Division



Greetings from Clovis!

It's been hot here in the San Joaquin Valley ever since The Club Car 2015 PCR Convention in Newark ended just a few weeks ago in mid-May. It was good to see and talk with a lot of old friends and meet some new ones. I enjoyed the clinics and other activities. Working with Giuseppe Aymar in the Contest Room throughout the week again this year, I had the opportunity to see and talk with just about everyone at the convention.

I tried something new, for me anyway, I played Bingo with the Non-Rails. They were glad I was there until I won the first two games, that is. Beginner's luck, I told them. My luck eventually ran out until the last few games when I started winning again. It was a fun and enjoyable evening I look forward to doing again next year in Modesto.

One of the highlights of the convention for me was announcing the Daylight Member of the Year Award as Doug Wagner. I say "announcing" because Doug wasn't at the banquet to receive the award in person. We'll rectify that at the Oceano meet on August 1<sup>st</sup>. Congratulations, Doug!

Followed by that highlight, another came my way when yours truly was awarded the 2015 John Allen Memorial Award by the PCR Coast Division. Seth Neumann and Jim Providenza, last year's winners, made the presentation, along with other previous winners on the stage. Tony Koester was also presented with a John Allen Memorial Award. Previous Daylight Division winners of the award are: Jim FitzGerald (1984), Chuck Harmon (1989) and Bill Scott (1998). (See the [July-September 2015 PCR Branch Line](#), pg 29, for more details about the history of the award.)

Highlights from the May 13, 2015 Board of Directors Meeting:

We are in need of volunteers for the PCR Non-Rail Committee. If you or your spouse is interested in helping the Non-Rails, let me know.

The 2019 PCR Convention will be the 75<sup>th</sup> anniversary of the PCR. A joint PCR/PSR convention in the Bakersfield area during 2019 was suggested instead of the 2016-2017 joint convention previously discussed. If you have any comments or concerns on this, or other topics, you can send them to me in an e-mail at [grenida@pacbell.net](mailto:grenida@pacbell.net).

The complete set of minutes for the meeting is available at: <http://www.pcnmra.org/pcr/board/board.shtml>

I'm looking forward to the August 1<sup>st</sup> meet and going over to Oceano to escape the Valley heat for a day. See you in Oceano!

Until next time, may all your balls be high.



# In the Daylight Contest Policies



By Chuck Harmon, Contest Chairman

The contest categories for upcoming meets have changed to make them the same as the categories in the PCR Contest Directory, as published on the PCR website on the "[Contest Information](#)" page. The new contest categories are:

Summer Meet, Oceano, August 1, 2015

Models: Structures

Photos: Model Black & White

Fall Meet, Santa Barbara, November 7, 2015

Models: Displays

Photos: Model Color

Winter, TBA, (Feb 2016)

Models: Caboose

Photos: Track & Structures



## Ideas in the Daylight ***Ever Need A Little Push?***

George Gibson

In SLO and the Daylight Division

Have you ever had one of those days when you walk into your layout room and visualize all the minor and major things that need to be done and can't decide on what to do? Have you ever needed a little push to get something done that you have no burning interest in doing? Have you ever spent an evening thinking about things that need doing and find yourself with nothing accomplished by night's end? Have you ever felt overwhelmed by the effort needed to actually complete the building of a layout?

Well partner, you're not alone. We all have those moments and we all regret the time we wasted thinking about stuff rather than actually doing stuff.



So here's an idea, I'm sure it will be silly to lot of folks, but if just a few find it helpful . . . wonderful. I consider it the sand beneath my drivers when my wheels are spinning and I'm not moving forward.

I make up small paper tabs and jot down individual tasks that need attention or doing on the layout or workbench. Each one highlights a different need or chore. One might say to add rock castings around a tunnel portal, and another might say to add passengers to passenger coaches. One could say to finish painting a backdrop scene, and another could say clean up the layout room. Others might suggestion some form of electrical task or may be just some track cleaning. Think of it as a "Things To Do List" but rather than a list on a sheet of paper, it's individual tasks on individual tabs of paper.

These tasks are generally listed with the idea they can be completed within an afternoon or evening in the train room. Some, by virtue of their need, might take a day or two.

All these paper tabs are then thrown into a covered container and shaken up vigorously to ensure they all have an equal chance of being selected. Once the occasion occurs (you're in the train room and don't know what to do) you randomly pick 3 paper tabs from the container and review

## Keeping Connected

### NMRA

Web - <http://www.nmra.org/>

Facebook -

<https://www.facebook.com/groups/46322574676/>

### PCR

Web - <http://www.pcrnmra.org/> and

Facebook -

<https://www.facebook.com/pcrnmra>

Yahoo Groups -

<https://groups.yahoo.com/neo/groups/PCR-nmra/info>

Daylight Division Web -

<http://www.pcrnmra.org/daylight/>

Facebook -

<https://www.facebook.com/DDIL2014>

Yahoo Groups -

<https://groups.yahoo.com/neo/groups/daylightdivision/info>



## Membership

Have you changed your address or other membership information?

Notify Headquarters!

e-mail: [nmrahq@aol.com](mailto:nmrahq@aol.com)

Phone: 423-892-2846  
(8am—4pm ET)

Mail: PO Box 1328  
Soddy Daisy TN  
37384-1328

them. Once reviewed, you select one and put the other 2 back into the container for another day. It's a simple, direct and very useful way to stop wasted time when you can't decide what to do.


As much as I would like credit for the idea, I have to say it actually originated from work sessions on friend's layouts. It became very apparent the layouts where the owner was prepared with a list of tasks to be accomplished, got more done than those owners who took a laid back approach. Individuals were assigned tasks (within their skill sets) and there was no wasted time talking about what was needed. Although a very direct approach, it's an efficient method in making decisions and getting things done.

So, if you find yourself stalled and can't decide what task to undertake, let lady luck or the modeling Gods help you decide. Pick 3, select 1, and then get started. Don't think about it just get started. In a month's time, you'll be surprised and amazed by how many things are getting done.



### **Irish Tracklayer**

O Gauge Track Products



**John Houlihan**

2682 W. Palo Alto Ave.  
Fresno, CA 93711-1107  
[www.irishtracklayer.com](http://www.irishtracklayer.com)

**(559) 435-0874**  
Fax (559) 435-2874  
e-mail: [john@irishtracklayer.com](mailto:john@irishtracklayer.com)

If you would like to advertise your shop, side business, or your layout, contact the [Editor](#) to place your business card size advertisement, announcement or layout. Show off your layout.



From the Editor:  
**CONTRIBUTE  
TO THE  
DAYLIGHT  
OBSERVATION**

By George Pisching

We seek contributions to the newsletter from and for the benefit of our members. Many members cannot make it to our quarterly meets and would like to know more about our comings and goings. You can get AP points for the Model Railroad Author certificate by getting items published in division and regional publications. (See the [NMRA website](#) for more information or contact the Daylight AP Chairman, Dave Grenier at [grenida@pacbell.net](mailto:grenida@pacbell.net).)

We're also looking for photographs of your layouts with captions or short stories about each. What do you say people? How about some publicity for your layouts that you have worked or are working so long and hard on?

Here are some suggested topics that will greatly enhance the Observation:

Daylight Member Profiles

Daylight Layout Profiles/Pictures

Things Seen in the Daylight

- That's a Prototype?
- Remarkable Layout Features

Jokes and Puzzles

Railroad Clubs in the Daylight

Tips & Tricks

Youth in the Daylight

Submit material to our Editor at [gmpisching@netzero.com](mailto:gmpisching@netzero.com) or call 559-275-0199. Thanks.

The Answers Are Out There:  
**The 2015 PCR Convention**

By Robert Pethoud, Members Aide

The Club Car, PCR's 2015 convention, has departed, but not before gracing its many attendees with vivid memories of clinics, contests, home and club layouts, and all of the other elements which contributed so much to the fellowship and fun experienced by all. Here I want to share a few snapshots of some outstanding home layouts I had the chance to visit.



First up is Don Marenzi's Copper Pass & Western, and HO scale model which depicts a freelanced route hauling copper, zinc, coal, and forest products in Alaska. Check out the convincing weathering on those freight cars.

Bob Brown is long-time editor and publisher of Narrow Gauge and Short Line Gazette. It was a real treat to finally get to see his On3 and On30 Tuolumne Forks, which features Sierra logging and mining in the Roaring Twenties.

The Feather River canyon in the spring of 1938 is the setting for Jim Dias's Western Pacific Railroad. The consistently convincing quality of his scenery and structures is evident in this photo, taken beside a large depot.

The UP Niles, Oakland, and Milpitas subdivisions in 1999 are modeled in HO scale by Seth Neumann on his operation-oriented layout. Seth is well known for his cutting edge electronics, but how about the spot-on realism of this East Bay bridge scene?

Finally, I had the chance once again to visit Jack Burgess's Yosemite Valley Railroad, created in HO to show the short line in the summer of 1939. What is there left to say about a layout which set the standard for realism in model railroading?

I hope you were able to attend this great convention; if you weren't, see what you missed? This is only a tiny sample of the many layouts open to conventioners, and I don't have the space here to discuss the clinics, contests, or many other events. Next April the convention will be in Modesto—sign up early because you do not want to miss it.





Aluminum dowels required for lift-out gate project, purchased from an Australian Company, DCC Concepts; <http://www.dccconcepts.com/> .



I added a flange to the underside of the lift-out gate for extra support



The lift-out gate, in place, rests on the benchwork, up against another piece of plywood, that is glued in place, so that the track can not move.

## Built in the Daylight

# Dougie's Layout Odyssey---Part V

By Doug Wagner, Bakersfield

I always get motivated to get back to work on my home layout after I get back from the Pacific Coast Region's annual conventions---and the Newark Convention was no different. After last year's San Luis Obispo Convention, I got motivated to install a workbench in my garage that also serves as my spray booth (3<sup>rd</sup> Quarter 2014 issue of the *Observation*: <http://pcnmra.org/daylight/newsletters.html#backissues>) .

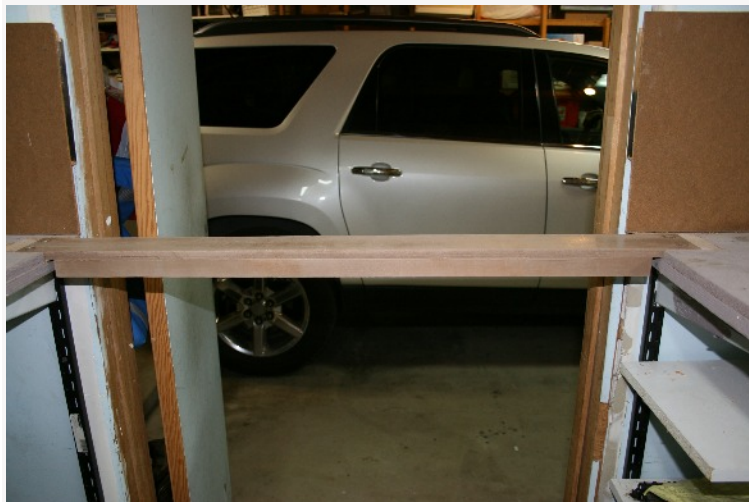


This year, I FINALLY got to work on what I have been putting off to do for a long while---constructing a lift-out gate for the entry into my layout room. I've researched and read and looked at every article on lift-outs and gates for model railroad layouts---both in magazines and on the Internet. I finally found one that looked simple enough that even I could do it! I happen to be surfing around on YouTube, where you can find a bunch of model railroad information---from laying track to painting and weathering locomotives. I happened to find the lift-out I wanted at [https://www.youtube.com/watch?v=LgOR9\\_QD9Vs&index=2&list=FLxIs3KfNLIeZrCfbzsVEXA](https://www.youtube.com/watch?v=LgOR9_QD9Vs&index=2&list=FLxIs3KfNLIeZrCfbzsVEXA) .

It is a two-parter, but it was able to give me enough information and confidence to get to work on the lift-out, because I have held up on working on my layout until I had figured out what I was going to do for a lift-out. I was not laying track because I wanted to wait and see exactly what I was going to do about a lift-out - and this video helped! I encourage everyone out there to take a look at YouTube as you will find a copious (like that fancy word?) amount of information for model railroading.

I hope to have my mainline in and running, hopefully, by the next *Observation* newsletter submission deadline. And speaking of working on model railroad layouts - am I the only one who is constructing a layout here? If not, let George Pisching know about it, so you don't have to only read my articles about my layout!

Until next time, may all your signals be green!



The completed lift-out in place at the entry of Doug's layout room. The bus wires and track need to be added, but that will be for the next issue.



In the Daylight  
**The Circus  
Train Schedule**  
From Doug Wagner

For Those That Follow The  
Circus Train Dates--HaveFun !

Tucson, AZ: June 18 - 21

Phoenix, AZ: June 24 - 29

Fresno, CA: July 2 - 6

Los Angeles, CA: July 9 - 14

Ontario, CA: July 17 - 21

Anaheim, CA: July 24 - Oct. 2

San Diego, CA: Aug. 6 - 9

Oakland, CA: Aug. 13 - 17

San Jose, CA: Aug. 20 - 30

San Francisco, CA: Sept. 3 - 7

Bakersfield, CA: Sept. 10 - 13

Sacramento, CA: Sept. 17 - 20

Salt Lake City, UT: Sept. 24 - 28

Denver, CO: Oct. 1 - 12

St. Louis, MO: Oct. 16 - 18

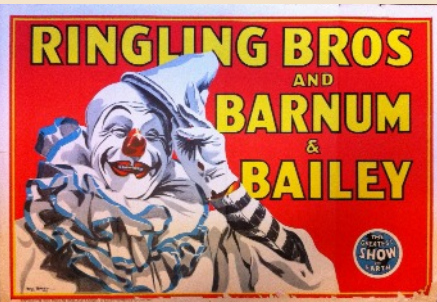
Cleveland, OH: Oct. 21 - 25

Toledo, OH: Oct. 29 - Nov. 1

Rosemont, IL: Nov. 5 - 15

Chicago, IL: Nov. 18 - 29

Indianapolis, IN: Dec. 3 - 6



Event in the Daylight  
**Porterville - Orosi Branch  
Golden Spike Ceremony**  
By Doug Wagner, in Bakersfield

As of 2250 hours - that's 10:50 PM for you civilians - on Sunday, July 12, 2015, the final spike was installed on the mainline of the Porterville-Orosi Branch Line layout. Heh, what did you think I was doing at lunch - watching reruns of Highway Patrol? The prevalent passenger train that will run on the branch line - the Santa Fe Doodlebug Motor 131, got the honors of being the first train to run around the entire layout. (see photos below)

Motor 131 at the crossing of the Southern Pacific Mainline at Tulare, begins it run to Exeter, over the lift-out gate--which actually worked in spite of me constructing it !

Now, to run a long train, tomorrow!

Doug Wagner, Bakersfield, CA

A Comment:

Doug,

The satisfaction of running that first train over newly laid track is one of life's little but significant pleasures.

It almost ranks up there with the birth of the first child one has fathered, which for me, made the eighth grade truly memorable.

Congratulations.

Bob





## Daylight Membership **Welcome Aboard !**

By Doug Wagner

Daylight Division's Newest  
Members:

Member	City	Joined
David Johnson	Santa Maria	1/12/2015
Dave Smith	Fresno	3/4/2015
Terry Schneider	Clovis	5/15/2015

**And Welcome Back to**  
Sally and Brewster Bird

Go to the Division Web Site at:

[www.pcrnmra.org/daylight](http://www.pcrnmra.org/daylight)



Support our State Parks ...



## Daylight Membership **Notes from the Membership Manager**

By Doug Wagner, Membership Chairman

First off, I would like to welcome aboard our newest members! I'd like to say "hi" to David Johnson of Santa Maria; Dave Smith of Fresno; and Terry Schneider of Clovis. We hope each and one of you will take full advantage of your NMRA membership and hope to see you at our next Daylight Division meet.



Well, I hope for those that attended the Pacific Coast Region's annual convention, in Newark, had a good time. The conventions always get me back on track (pun intended), for getting back to work on my home layout, the Porterville-Orosi Branch of the Santa Fe Railroad. And I did exactly that. After visiting all those layouts, at the convention, I finally decided to tackle what I was not looking forward to doing. That is constructing a lift-out bridge (see article on page 10).

Ok, on to membership stuff. If any of you that receive the NMRA's monthly magazine, you probably noticed several articles in relationship to insurance and how many times a non-NMRA member is allowed to attend the Daylight Division Events (yes, they would like to change the wording of "meets" to "events" because meets don't sound like fun!), and insurance.

Not to bore you with the 11-page memo we received from NMRA HQ, so I'll put it into a nutshell:

Non-members can attend 3-Daylight Division meets over their lifetime. After that, they will be asked if they are interested in joining the NMRA.

And non-NMRA layout hosts are not covered by the NMRA-sponsored insurance.

Does this mean quit inviting non-members? Of course not. But it does mean we have to keep a closer eye on the attendance sheet that we all sign up on when we enter the front desk at the meet (event). I know some of you - or most of you - may not like this policy, but it is to, as the insurance guys say, keep us in good standing as far as insurance for our meets and the Daylight Division.

I've pared down the memo for some of the Frequently Asked Questions from the Insurance Policy memo that was sent out, that pertain directly to our Daylight Division meets (events):

3) My Division has always had members and guests who don't belong to the NMRA. We like it that way. Many of these people are personal friends of ours. Why is this anyone's business but our own?

This question keeps coming up, so let's be very direct here: **If your Division allows permanent visitors to participate actively in Division**

*Continued on Next Page*

## ***In Memoriam***

### **Passing of a past PCR Leader**

From Dave Connery, PCR

The following sad Obit appeared in this morning's SF Chronicle

Robert T. Dupont was born in San Francisco on April 30, 1930, and passed away on May 3, 2015 in Burlingame.

He was the only child of Emma and Harold Dupont and lived in San Mateo since the age of three months. He attended the University of San Francisco.

He played semi-pro football for the South San Francisco Windbreakers and proudly served in the U. S. Marine Corps during the Korean conflict.

He spent many years in the automobile business and also owned Peninsula Hobbies for fifteen years. The old car and model train hobbies were a very important part of his life and he served them well as a great leader and promoter.

In past years, he was President of the National Model Railroad Association. He assumed many leadership roles in various organizations including the Mid-Peninsula Old Time Auto Club.

He enjoyed the many friendships and activities and loved driving his old Fords, model railroading, football, baseball, auto racing, antique airplanes, boating and the Cliff House.

He is survived by his loving wife, Diane; daughter Nanette; grandchildren, R. C. and Lauren; and his German Shepherd, Harli.

## ***Notes from the Membership Manager***

**activities as if they were NMRA members, you risk losing insurance coverage for any event where that abuse of membership can be demonstrated.**

You could be personally on the hook for thousands of dollars – or more – in damages to the injured person and to the public facility to which you represented that you had insurance. As an NMRA officer or member, your personal assets are being protected by our liability insurance. Without that insurance, all the officers, and even the members, of a Division (or Region) are ***personally*** responsible for paying damages in case of an injury. **That means *your house, your bank account, your assets are on the line.***

You know that most insurance adjusters are on the lookout for reasons to deny claims. If there's a claim, you can be sure it *will* be investigated. Member fraud is a breach of the insurance agreement, and is an easy-to-find and easy-to-support reason for denying a claim.

One of the first things the insurance investigators will ask HQ for is a membership roster of the NMRA group in question. All the insurance company needs to find out is, "Hey, this Division is letting non-members participate as if they were members." Keeping clean, honest membership records isn't something that National came up with to complicate your life or take away your fun. This is what our insurance provider has demanded in return for selling us our policy. It's part of what we all pay for peace of mind and protection of our personal assets.

If your Division is trying to run a game on the NMRA or on our insurance company, the company will find out – and your negligence and dishonesty could mean that everyone in your Division, and even everyone in the entire NMRA, loses this huge, huge benefit.

4) Can coverage be extended to a home layout tour where the host is a non-NMRA member?

No, unless the non-member purchases an NMRA membership, or one is purchased for him or her. We recommend that non-members be encouraged to join the NMRA prior to the event. A one-time six-month RailPass membership is available, to those who are eligible, for \$9.95. Or non-members can be encouraged to join for the full annual fee while the event underwrites \$9.95 of the full amount.

13) Can non-members attend Division and Regional meets?

Yes, but they cannot participate in NMRA contests or receive benefits of membership without being a member.

The **official policy** of the NMRA is that non-members ("guests") are allowed to visit a Division or Region meeting three times over the course of a lifetime to get a sampling of what goes on at those activities. The NMRA Board of Directors has determined that three visits are enough to

*Continued on Next Page*

## Event in the Daylight **Central Coast Railroad Festival**

The Central Coast Railroad Festival (<http://ccrrf.com/>) will take place October 1-4, 2015 (Thursday-Sunday) in San Luis Obispo County and Northern Santa Barbara County.

As was done in 2010, 2011, 2012 and 2013, I will organize a free self-guided layout tour as part of the Festival. We had eighteen model railroads and garden railroads on the last tour and hope to have these plus some new railroads this year.

This Festival has been presented since 2006, in coordination with the 2008 NMRA National Convention, several PSR regional conventions, the 2014 PCR Convention and the 33<sup>rd</sup> National Narrow Gauge Convention.

I hope to see all of you here.

Bob Chaparro, Moderator, Model Railroads of Southern California

[https://groups.yahoo.com/neo/groups/Model\\_Railroads\\_Of\\_Southern\\_California/info](https://groups.yahoo.com/neo/groups/Model_Railroads_Of_Southern_California/info)



## **Notes from the Membership Manager**

give a non-member a good idea of the benefits of NMRA membership. After three visits, the non-member must either join the NMRA, or the must be asked not to return to the Division or Region meeting or members' event.

If a former member allows his or her membership to lapse but continues to show up at Division or Region events, then he or she cannot be permitted to hang around, taking advantage of old friendships to receive benefits that are intended only for members. If they are not willing to join, these individuals must be asked to leave. As part of determining the cost and extent of our insurance coverage, our insurer wants to know who our members are and how many members we have.

Should a claim occur, having allowed non-members and former members to become "permanent guests" could severely jeopardize not only the offending Division or Region's insurance coverage, including coverage for their officers, but also the coverage of the entire NMRA.

### **14) Are non-members allowed to participate in NMRA-run auctions and raffles?**

No. Participation in Division- or Region- run auctions and raffles is a benefit of NMRA membership that cannot be extended to non-members. In addition to the insurance questions raised by non-member participation, there are also tax consequences resulting from non-member participation in these activities.

Well, the memo, hopefully explained it better than I could. I know we've allowed a lot of the above to occur as we were trying to be the nice guys and show the visitors that we weren't monsters, in the hopes that they would join the NMRA. But, the bottom line appears to be liability, which is explained to its fullest in the longer, 11-page memo. If anyone would like to see the entire document, please let me know and I can email it to you.

Don't forget, the Daylight Division's next **Event**, will be held at the Oceano Depot, and George Gibson and his cohorts, are busy lining up an exciting **Event**, for Saturday, August 1. For more and the latest information about the Daylight Division Oceano **Event**, visit the Daylight Division's web site at <http://pcrnmra.org/daylight/>.

Now, on to write up the article on my home layout!





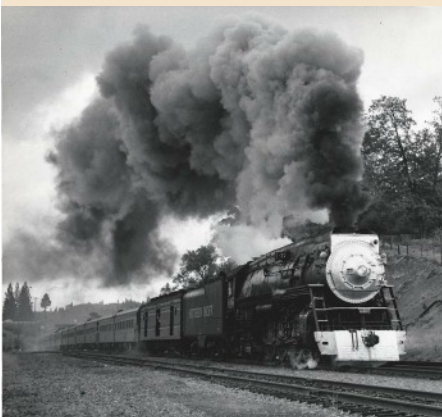
The NMRA eBulletin is an official bi-monthly production of the National Model Railroad Association, Inc. Publishing Department (Don Phillips, Manager). Its purpose is to keep every NMRA member informed about organization news and events.

If you know of an NMRA member who is not receiving this mailing, please direct them [here](#) to update their email address.

If you no longer wish to receive these mailings, please don't mark them as SPAM. Instead, click the Safe Unsubscribe link at the bottom of the bulletin you received. ©2015 National Model Railroad Association, Inc., P.O. Box 1328, Soddy Daisy TN



**Portland Oregon**  
**August 23-29, 2015**  
[www.nmra.org/conv2015](http://www.nmra.org/conv2015)



NMRA eBulletin July 2015

## Next stop: Portland

Portland Daylight Express Convention to be held August 23 - 29, 2015 is our next National Convention. This is the 80th NMRA National Convention.

Many of you have already made your summer travel plans, and we appreciate that a good number of you are coming to visit with us at Portland in August. However we know that 30% of the attendance at an NMRA National Convention registers within the last two-months before the event. So several hundred members have yet to make their summer travel plans. Please consider joining us for this year's NMRA National Convention.

Some popular tours sold out quickly, but there are plenty of interesting tours still available. We also have a record number of Special Interest Groups participating, each with worthwhile events and activities. Plus, our Non-Rail Chair has assembled a great program of activities at the hotel, and an amazing variety of General Interest Tours.

Beginning in late July you can pre-register Silent Auction items through our website, saving you much time entering them on the day.

Our website has links to numerous tour activities so you can research destinations and tour layouts before you choose the tour. A number of the layouts are featured in recent issues of *NMRA Magazine* and several hobby publications.

We look forward to having you visit, enjoy the many exciting activities, meet new friends.

Check out our website [www.nmra2015portland.org/](http://www.nmra2015portland.org/)

## EduTRAIN® is looking for a few good clinics

Ever wish you could see some classic clinics from the NMRA National Conventions that you may have missed? Now you can. The NMRA EduTRAIN program has begun posting clinics to our web site. To find them, log into the site using your member sign-in and look under EduTRAIN. Several clinics are available and more are under review, but we are looking for many additional clinics to add to the program.

EduTRAIN clinics are specifically designed to teach model railroading skills; how to build models, how to design and build a layout, how to operate your model railroad. Information on how to create a clinic using the SAT method is also available in the EduTRAIN section of the web site, however, many excellent clinics already exist.

*Continued on Next Page*

# NMRA InfoNet

Info Blast June 2015

## Welcome to the InfoNet News (Infoblast) For June, 2015

From Steve August, NMRA Regional Advisory Council Director:

## WHAT IS THE RAC DIRECTOR?

Recently I was asked to write the article to tell the readers about the position I hold on NMRA Board of Directors. I am the RAC Director or Regional Advisory Council Director. I am the Board Member who represents the Region Presidents and or their delegate.

The purpose of the RAC is to:

Convey Region opinion to the Board of Directors and other officers within the NMRA national level.

Comment on any dues increases beyond index which comments shall be considered by the Board of Directors prior to the adoption of said dues increases.

Receive the agenda, motions, and reports electronically at the same time as the Board of Directors receives them; and may, but need not, as a body comment on said materials through and by their representative on the Board.

The RAC, acting as a nominating committee, shall nominate, with the goal of at least two candidates for its position, and elect by a majority vote, the RAC position to the Board of Directors.

The RAC may also propose Regulations changes and by two-thirds vote place matters by way

*Continued on Next Page*

# NMRA eBulletin

Your clinic may very well be of great interest to modelers in other regions or countries, and vice versa.

We are looking for clinics that cover

- Model building, both rolling stock and structures
- Scenery, including backdrops and weathering
- Electrical and electronic
- Layout planning and construction
- Track laying
- Operations
- Modeling industries and rail operations
- Maintaining your layout and equipment
- Photography, both model and prototype

If you have a clinic that will help model railroaders learn important skills, please contact Bob Blake at [edutrain@nmra.org](mailto:edutrain@nmra.org). EduTRAIN clinic authors can receive AP Author credit for creating clinics and NMRA members can receive Volunteer credit for giving an EduTRAIN clinic.

## IT DEPARTMENT NEWS

Over 75 National clinics available for streaming on our website!

A number of videos were recorded of clinics at several recent National conventions. These 85 videos were initially available on DVDs from the NMRA Library, and are now becoming available in the Members Only section of the website as streaming videos. Currently over 75 of these videos are ready to be watched online. This is a Members Only service, so you need to log into the NMRA website as a member. You can then view them from either the Education menu, or by clicking the "Watch Convention Videos" button on the Member Home Page. New videos will be posted weekly as we get the time to convert the DVDs into an online format, so keep watching the website for additions.

### NMRA Member Forums Now Open

The new NMRA Member Forums are open! Members are already posting modeling information, questions and items of general interest. The Forums are normally accessed from the Member Home page (big blue block on the right side of the screen) or directly at <http://www.nmra.org/forum> - try them out today! As you may know, the "Regions and Divisions" Yahoo Group was recently closed, so if you're interested in discussing NMRA matters, there's room for that, too, so visit the new NMRA Member Forums!

### Our Twitter feed is up and running

The NMRA Twitter account is active once again, thanks to volunteer Tom Gasior.

*Continued on Next Page*

# NMRA InfoNet

of initiative or referendum on the next available NMRA ballot in accordance with provisions set forth in Article XII of the NMRA Executive Handbook.

The Board of Directors of the NMRA shall establish, with the assistance and concurrence of the Regions, a Regional Advisory Council (RAC). This position was created some time ago and I am third Director to act in this capacity since its inception.

It shall not serve as a level of governance of the NMRA, but shall provide input to the Board of Directors representing the different perspectives of the Regions.

The body shall consist of one representative from each Region, who normally would be the Region President or such other representative that the Region designates for said purpose, as well as an alternate in case the Region representative is unable to participate.

There shall be a position on the Board of Directors for a representative of the Regional Advisory Council (RAC) as established under the provisions of Article VIII, Paragraph 10 of the Regulations.

Representatives on the Regional Advisory Council should have electronic communications access available and shall meet on a periodic basis, in a manner and under circumstances to be developed by the RAC.

In accordance with Article VIII, Section 10, Paragraph E, the Regional Advisory Council shall select candidates for a repre-

*Continued on Next Page*

# NMRA eBulletin

Tom's busy posting news, retweets of interesting subjects, and keeping everyone informed. If you're on Twitter, follow us at our new Twitter feed: @nmraonline. And if you're not on Twitter, this is a good reason to start!

Editors: Gerry Leone, MMR, HLM, and Chuck Diljak

## A Few Words from the President

A few words about LCC

You may have seen the ads or heard the scuttlebutt about "LCC". What is "LCC"? Well, in a nutshell it is "DCC for your layout," although it is much more than that.



DCC or Digital Command Control has been on the scene for almost 30 years now in one form or another. Originally introduced as an analog system commercially over 50 years ago by GE as "Astrak," this approach allowed individual control of locomotives through carrier waves superimposed on the rail system. It worked, but it had limitations such as heat buildup and the size and number of onboard receivers.

Today's far more sophisticated digital system uses digital packets of information sent through the rails along with the voltage needed to operate. Again, the emphasis is on individual control of motive power, and Astrak's limits have been addressed by this different system. But DCC also has limits, primarily when adding non-motive power devices to a limited bus line, such as stationary decoders for switch machines, signaling systems and detection. LCC is not intended to supplant or replace DCC for your motive power but offers many advantages in operating switches or turnouts, signaling, detection and even lighting. This column is not the place for a primer on LCC; we hope to offer that primer at Portland and in NMRA Magazine. (You can take a look at the "Frequently Asked Questions about LCC" PDF by clicking [here](#). -Ed.)

But understand, this new technology, built by hobbyists on a proven platform, is just that - NEW. That means that commercial products and the articles on LCC are still underway. As with any new technology, one predicts at their peril about its impact. We believe it holds great potential to do for your layout functionality what DCC has done for your motive power. It all depends upon the commercial sector and you, the consumer.

In theory, LCC offers a revolution in providing easier and less expensive control for your layout systems. Whether that theory is realized depends on you and your interest. I know that the timing is good for me as I embark upon a major layout project in the next few years. I want LCC along with DCC and hope it will be there when I am ready. For now, watch these pages as we finalize the standards and encourage the commercial sector to plunge into this new technology. For once, the NMRA is ahead of the curve and we hope no curve balls are thrown.

Those are my thoughts; what are yours? *Charlie*

*Continued on Next Page*



## NMRA InfoNet

representative to serve on the Board of Directors and said representative shall not be subject to membership vote. Each Region shall have one vote exercised through the Regional Advisory Council, and the Council, acting as a nominating committee, shall, as a goal, try to nominate two candidates for secret balloting by the RAC representatives.

This in the nutshell is what the RAC is, how they are elected and what they do as part of the National Organization known as the National Model Railroad Association.

### Southwest Chief Gets a Reprieve?

Amtrak has announced that it will not terminate the Southwest Chief on January 1, 2016, when its contract with the BNSF Railway for track maintenance expires. The train serves rural communities in western Kansas, southeastern Colorado, and northern New Mexico on its route from Chicago to Los Angeles.

The service remains in jeopardy of ending January 1, 2016, but Amtrak announced that it will continue operations as long as it appears political progress is being made to come up with a comprehensive funding solution for necessary track infrastructure upgrades.

National Association of Railroad Passengers (NARP) Mountains and Plains Division Leader is still concerned about the fate of the train. "Recent exaggerated news reports that the train has been 'saved' hurt our efforts. We have an uphill struggle ahead of us.

## NMRA eBulletin

### Board of Directors meeting in Portland

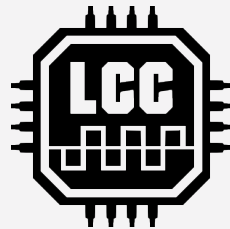


The portion of the NMRA Board of Directors meeting that is open to all members will begin at 9:00 a.m. on Saturday, August 22. The meeting will most likely last all day and the Board will also meet on Sunday if needed. Any NMRA member is welcome to attend; please remember that there will only be room at the table for

Board members and officers. Please see the hotel directory for the exact room location of the meeting.

The **Annual NMRA Business Meeting** will be Thursday August 27, from 8:30 to 9:30pm in the Weidler Room. Check the convention timetable for updates.

### LCC standard to be unveiled in Portland



During its Winter meeting, the NMRA Board of Directors approved the standards for Layout Command Control, or LCC. Those standards will be introduced to manufacturers at the Portland Convention this August.

As an overview, Layout Command Control will revitalize existing DCC systems by taking some of the burden off the DCC bus. Today's DCC bus is over-crowded with commands for multiple locomotives, signals, turnouts, sound, transponding, and accessories, and the result is a noticeable lag in locomotive response time. LCC re-routes those non-locomotive commands through its own single pair of wires on the layout. This "layout command bus" is at least 10 times faster than the DCC bus, and will open up the hobby to a wide range of new plug-and-play accessories. These could include signaling systems, phone and intercom systems, and even systems to control the room lighting. LCC doesn't replace DCC systems, it acts as an adjunct to them, and is totally compatible with all DCC systems available today.

If you're interested in LCC or want to know what may be coming in the months ahead, please ask manufacturers about their plans. Manufacturers will only begin producing LCC-compatible items if they know there's a demand!

A "frequently asked questions" article about LCC will appear in the September issue of *NMRA Magazine*, but you can take a sneak peek at it now by clicking [here](#).



### "Model Citizens" receives additional support from the NMRA

Many of you are aware that a filmmaker, Sara Kelly,

*Continued on Next Page*

# NMRA eBulletin

## Region and National Conventions

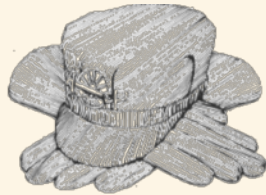
(Only those conventions occurring in the next three months are listed)

Jul 22-25 Lone Star Region, Beaumont, TX

Aug 23-29 NMRA National Convention, Portland, OR

Sep 16-20 Pacific Southwest Region, Scottsdale, AZ

Sep 18-21 Australasian Region, Sydney, Australia



## New Master Model Railroaders

554: Donald Bailey - RMR

555: Bruce DeYoung - NER

556: Howard Goodwin - SER

557: Thomas Griffiths - MER

558: David Metal - NER

559: Ross L. Ames - PNR

# NMRA eBulletin

has spent the last two years shooting footage for a documentary about model railroading that she's entitled, "Model Citizens." She began a Kickstarter campaign to get the funds she needed to do that shooting, and the NMRA contributed \$1,000 to the cause. She shot interviews and general footage extensively at the Cleveland convention last year.

Recently Sara finished shooting and began the "post-production" phase of filmmaking - editing, narration, and music. She again started a Kickstarter campaign to receive funding for that, and again the NMRA whole-heartedly backed her by contributing \$1,000. The NMRA will be recognized in the film's credits for its contributions.

"Model Citizens" is expected to be finished later this year and will hopefully be picked up by public television stations around the country, as well as other video venues.

## Layout Directory Project underway

Good news! A group of NMRA volunteers has taken on the proposed Layout Directory Project and will be reviewing its various aspects. This promises to be a very exciting member benefit when completed, so stay tuned for more details as they become available.

## The next *NMRA eBulletin* will be a little late!

The next edition of the *NMRA eBulletin* is scheduled to be mailed September 1. But because the convention doesn't conclude until the end of August, and because we want to try to include news from Portland in that issue, we'll most likely be mailing it the second week of September.

## What's up in the forums?

If you're not logging into the forum of the Members Only section of our website, you're missing some good conversations! Stop by and join in!

If you're not logged in to the NMRA website as a member, when you click on one of the links below you'll be sent to the login page.

- [Necessary verification for the Golden Spike Award](#)
- [How to scratchbuild structure windows in N scale](#)
- [Great modeling tips and tricks](#)
- [Using the Cricut Explore cutter](#)